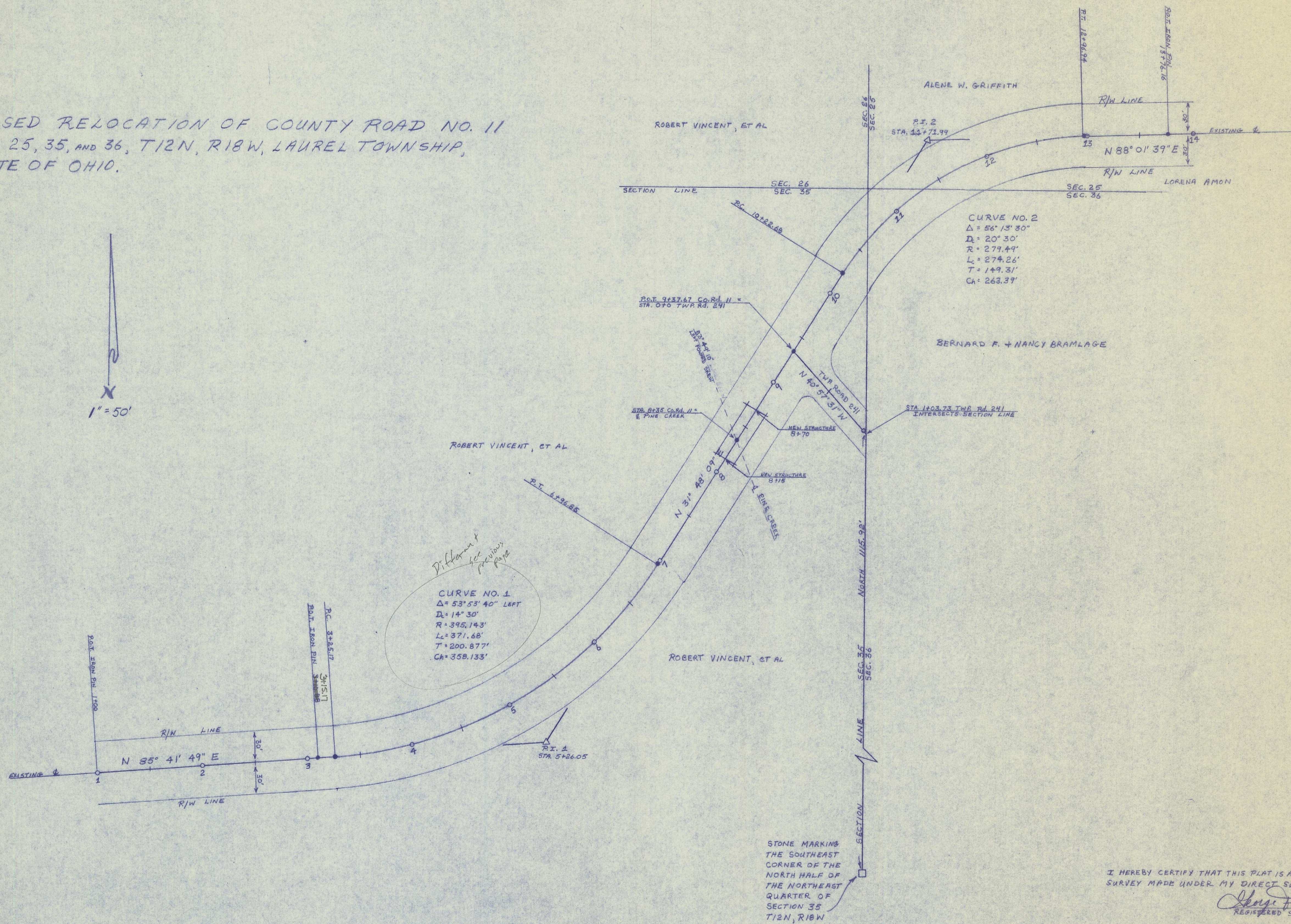


PLAT SHOWING PROPOSED RELOCATION OF COUNTY ROAD NO. 11
 SITUATED IN SECTIONS 25, 35, AND 36, T12N, R18W, LAUREL TOWNSHIP,
 HOCKING COUNTY, STATE OF OHIO.



Difference for utility poles

CURVE NO. 1
 $\Delta = 53^\circ 53' 40''$ LEFT
 $D = 14^\circ 30'$
 $R = 395.143'$
 $L_c = 371.68'$
 $T = 200.877'$
 $C_h = 358.133'$

CURVE NO. 2
 $\Delta = 56^\circ 13' 30''$
 $D = 20^\circ 30'$
 $R = 279.49'$
 $L_c = 274.26'$
 $T = 149.31'$
 $C_h = 263.37'$

STONE MARKING
 THE SOUTHEAST
 CORNER OF THE
 NORTH HALF OF
 THE NORTHEAST
 QUARTER OF
 SECTION 35
 T12N, R18W

I HEREBY CERTIFY THAT THIS PLAT IS A TRUE REPRESENTATION OF THE
 SURVEY MADE UNDER MY DIRECT SUPERVISION

George F. Seymour
 REGISTERED SURVEYOR NO. 6094 JULY 12, 1976



GEORGE F. SEYMOUR & ASSOCIATES
 LAND SURVEYING AND MAPPING SERVICE
 P.O. BOX 26 43138
 LOGAN, OHIO

COUNTY ROAD 11 RELOCATION