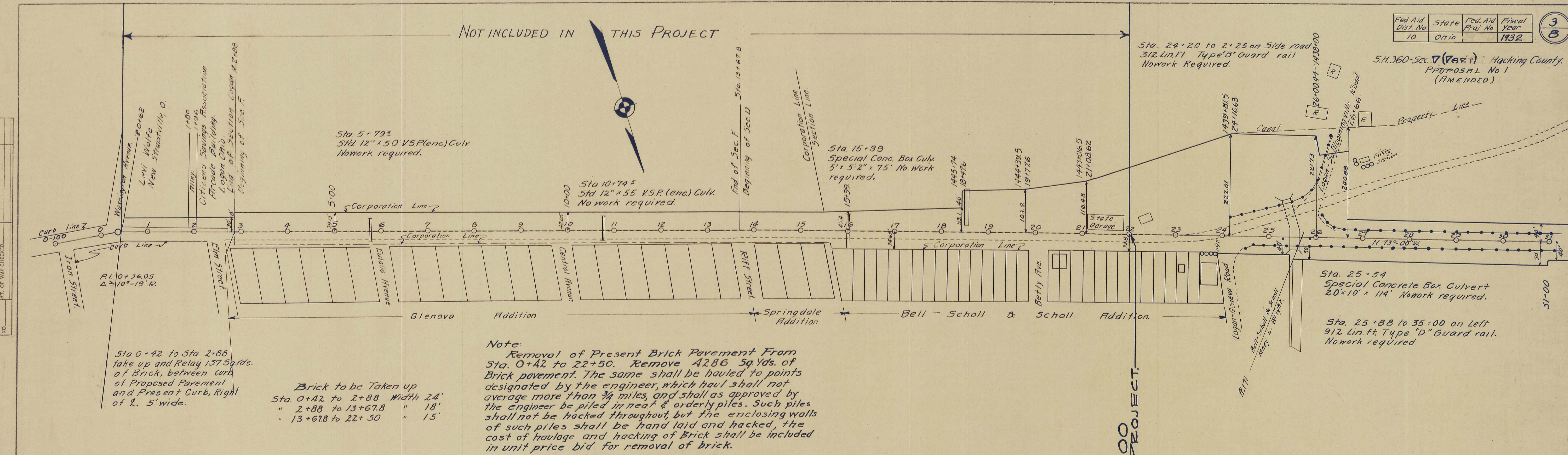


S.H. 360-5ec 7 (Part) Hocking County, PROPOSAL No 1 (AMENDED)

PLAN  
 SURVEYED  
 PLOTTED  
 NOTE BOOK NO. \_\_\_\_\_  
 ALIGNMENT CHECKED  
 RT. OF WAY CHECKED

PROFILE  
 SURVEYED  
 PLOTTED  
 NOTE BOOK NO. \_\_\_\_\_  
 GRADES CHECKED  
 STRUCTURE NOTATIONS CH. NO.

NOT INCLUDED IN THIS PROJECT



Sta 0+42 to Sta. 2+88 take up and Relay 137 Sq.Yds. of Brick, between curb of Proposed Pavement and Present Curb, Right of E. 5' wide.

Brick to be Taken up  
 Sta. 0+42 to 2+88 Width 24'  
 " 2+88 to 13+67.8 " 18'  
 " 13+67.8 to 22+50 " 15'

Note:  
 Removal of Present Brick Pavement From Sta. 0+42 to 22+50. Remove 4286 Sq.Yds. of Brick pavement. The same shall be hauled to points designated by the engineer, which haul shall not average more than 3/4 miles, and shall as approved by the engineer be piled in neat & orderly piles. Such piles shall not be hacked throughout, but the enclosing walls of such piles shall be hand laid and hacked, the cost of haulage and hacking of Brick shall be included in unit price bid for removal of brick.

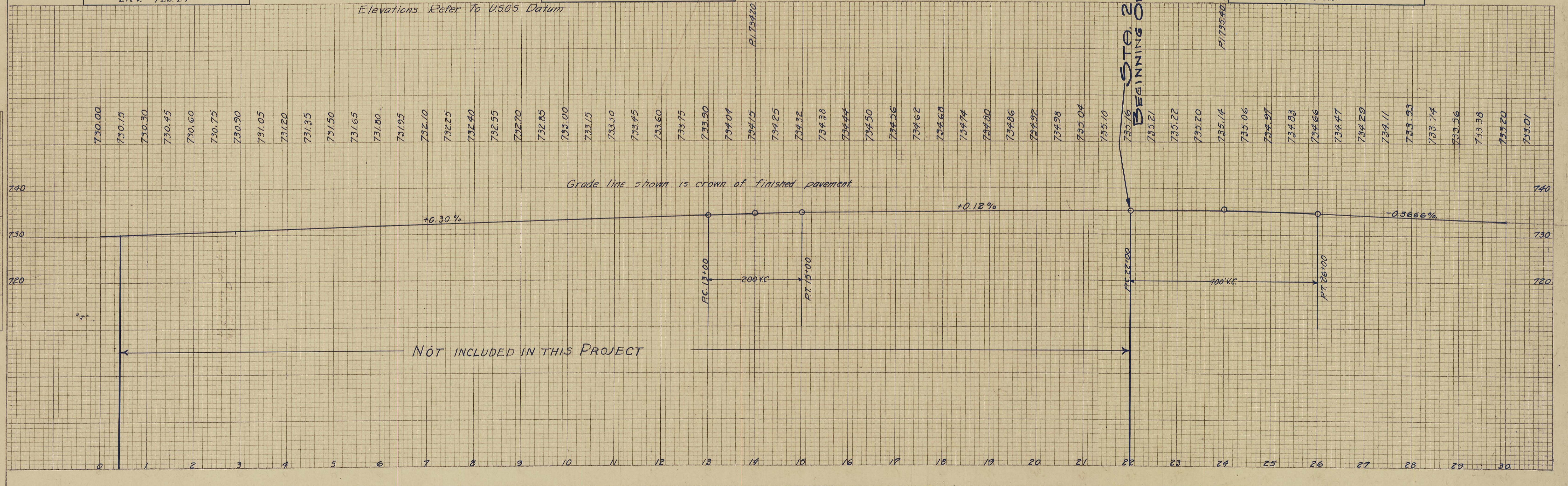
B.M. Sta. 0+50  
 R/W Marker Lt. Side of Road  
 Elev. 729.24

B.M. Sta. 16+00  
 Bronze Plate Lt. Culv. H.W.  
 Elev. 726.77

CURVE TABLES ON SHEET # 7

B.M. Sta. 25+54  
 Bronze Plate in Culv. H.W.  
 Elev. 734.22

Elevations Refer To U.S.G.S. Datum



NOT INCLUDED IN THIS PROJECT