

SCOTT DRUMMOND RENTALS
(740) 385-5134

Item No.	Station	Rt or Lt	Lin. Ft. of Pipe	Exc. Cu. Yds.	Emb. Cu. Yds.	App. Cu. Yds.
1-A	188+36	Rt	8"		13.86	18.0
2-A	188+36	Lt	12"		35.4	8.0
3-A	188+36	Lt	15"	6.75	16.5	21.0
4-A	192+65	Lt			4	5.0
5-A	192+65	Lt			23	4.0
6-A	192+65	Rt			14	3.0
7-A	192+65	Rt			93	10.0
Total			34		80.9	69.0

*Inc. with Roadway Exc. & Emb.

Item No.	Sheet No.	Type	Size	Length
7-C	97	Pipe for Culv.	24"	100
8-C	98	Concrete Box Culv.	10'x8'	174

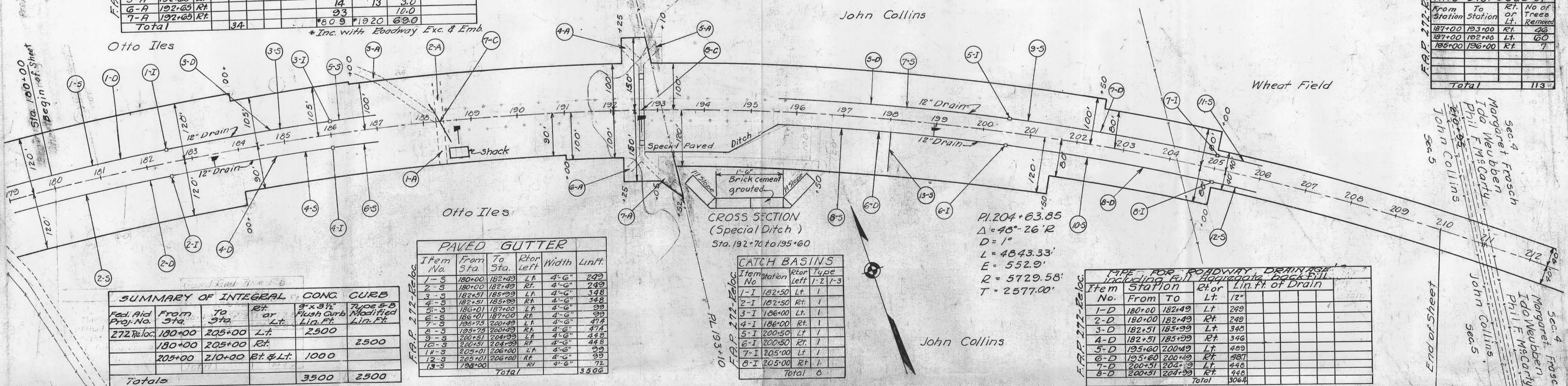
From Sta.	To Sta.	Rt or Lt	Width	Length
192+70	195+75	Rt	1'-6"	310
Total				310

* Length Corrected for Slope & Angle

Fed. Aid Dist. No.	State of Ohio	Fed. Aid Proj. No.	Fiscal Year
10		397-1	1938

S.H. 360 Sec. 4, Rpt. L & Dept. Hocking County

From Station	To Station	Rt or Lt	No. of Trees Removed
187+00	193+00	Rt	26
187+00	192+00	Lt	60
186+00	196+00	Rt	7
Total			113

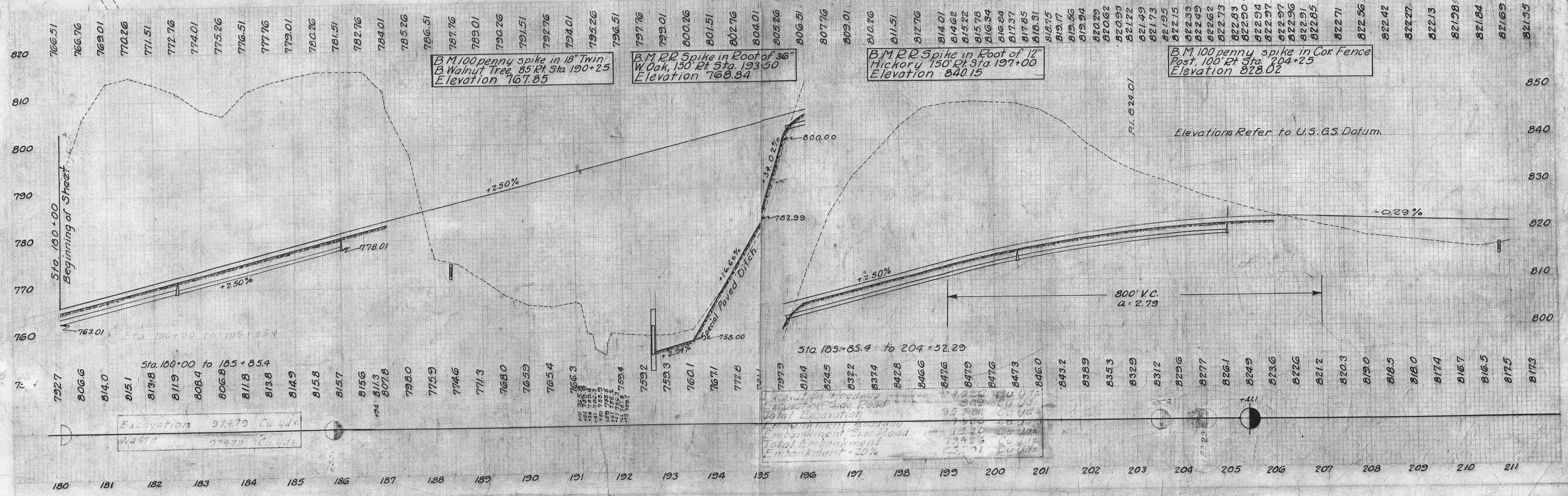


Fed. Aid Proj. No.	From Sta.	To Sta.	Rt or Lt	9" x 3 1/2" Flush Curb Lin. Ft.	Type B Modified Lin. Ft.
272 Reloc.	180+00	205+00	Lt.	2500	2500
	180+00	205+00	Rt.		2500
	205+00	210+00	Rt. & Lt.	1000	
Total				3500	2500

Item No.	From Sta.	To Sta.	Rt or Lt	Width	Lin. Ft.
1-S	180+00	182+49	Lt.	4'-6"	249
2-S	180+00	182+49	Rt.	4'-6"	249
3-S	182+51	185+99	Lt.	4'-6"	348
4-S	182+51	185+99	Rt.	4'-6"	348
5-S	186+01	187+00	Lt.	4'-6"	99
6-S	186+01	187+00	Rt.	4'-6"	99
7-S	195+75	200+49	Lt.	4'-6"	474
8-S	195+75	200+49	Rt.	4'-6"	474
9-S	200+51	204+99	Lt.	4'-6"	448
10-S	200+51	204+99	Rt.	4'-6"	448
11-S	205+01	206+00	Lt.	4'-6"	99
12-S	205+01	206+00	Rt.	4'-6"	99
13-S	194+00		Rt.	4'-6"	72
Total					3506

Item No.	Station	Rt or Lt	Type
1-I	182+50	Lt.	1
2-I	182+50	Rt.	1
3-I	186+00	Lt.	1
4-I	186+00	Rt.	1
5-I	200+50	Lt.	1
6-I	200+50	Rt.	1
7-I	205+00	Lt.	1
8-I	205+00	Rt.	1
Total			8

Item No.	From Station	To Station	Rt or Lt	Lin. Ft. of Drain
1-D	180+00	182+49	Lt.	249
2-D	180+00	182+49	Rt.	249
3-D	182+51	185+99	Lt.	348
4-D	182+51	185+99	Rt.	348
5-D	195+60	200+49	Lt.	489
6-D	195+60	200+49	Rt.	489
7-D	200+51	204+99	Lt.	448
8-D	200+51	204+99	Rt.	448
Total				3064



Excavation 97,779 Cu. Yds.
Waste 97,479 Cu. Yds.

Excavation Roadway 9,020 Cu. Yds.
Excavation Side Road 289 Cu. Yds.
Total Excavation 9,309 Cu. Yds.
Embankment Roadway 13,200 Cu. Yds.
Embankment Side Road 73,316 Cu. Yds.
Total Embankment 86,516 Cu. Yds.
Embankment +20%