

I hereby certify that the sections of Township Road shown hereon has been constructed in accordance with the plans and specifications.

2-8-78  
Date: Clarence Smith  
DISTRICT DEPUTY DIRECTOR

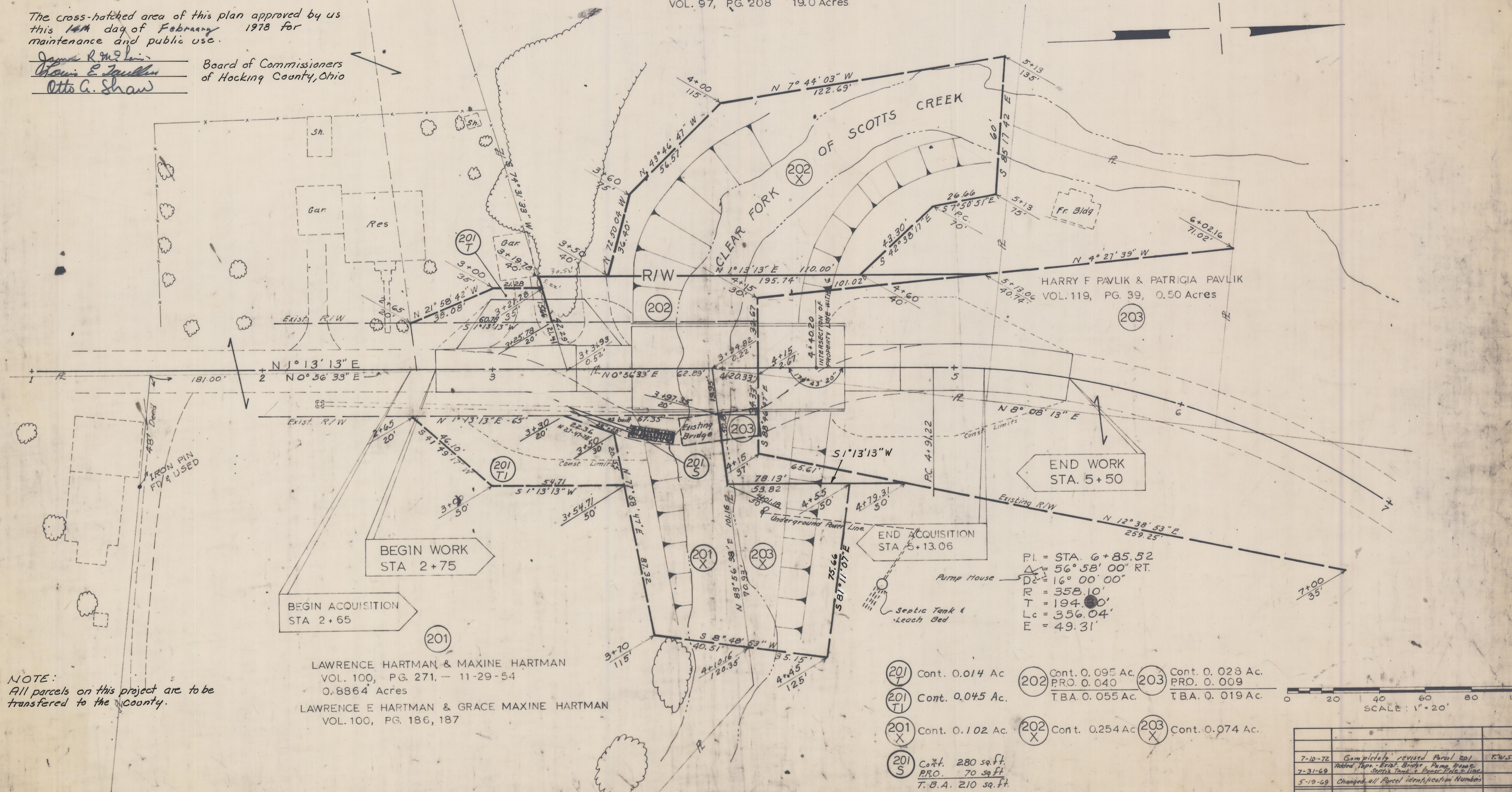
I find that the sections of road as shown by the cross hatched area has been constructed in a satisfactory manner and is in good repair.

2-14-78  
Date: Larry P. Hatcher  
HOCKING COUNTY ENGINEER (202)

ILO ARLENE EMERSON  
VOL. 97, PG. 208 19.0 Acres

The cross-hatched area of this plan approved by us this 14th day of February 1978 for maintenance and public use.

James R. McLean  
Christine E. Paulsen  
Otto C. Shaw  
Board of Commissioners  
of Hocking County, Ohio



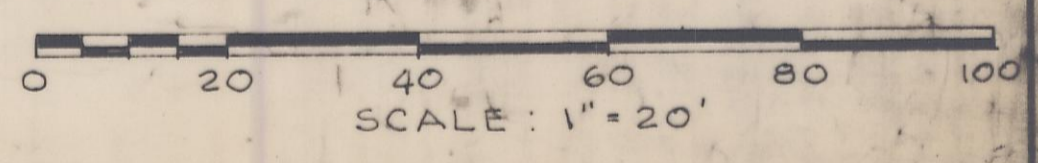
NOTE:  
All parcels on this project are to be transferred to the County.

LAWRENCE HARTMAN & MAXINE HARTMAN  
VOL. 100, PG. 271. - 11-29-54  
0.8864 Acres

LAWRENCE E HARTMAN & GRACE MAXINE HARTMAN  
VOL. 100, PG. 186, 187

- (201) Cont. 0.014 Ac
- (201) Cont. 0.045 Ac
- (201) Cont. 0.102 Ac
- (201) Cont. 280 sq. ft.
- (201) Cont. 70 sq. ft.
- (201) T.B.A. 210 sq. ft.
- (202) Cont. 0.095 Ac
- (202) T.B.A. 0.055 Ac
- (202) Cont. 0.254 Ac
- (203) Cont. 0.028 Ac
- (203) T.B.A. 0.019 Ac
- (203) Cont. 0.074 Ac

PI = STA. 6+85.52  
Δ = 56° 58' 00" RT.  
D = 16° 00' 00"  
R = 358.10'  
T = 194.00'  
Lc = 356.04'  
E = 49.31'



DATE	REVISION	INIT.
7-10-72	Completely revised Parcel 201	T.W.S.
7-31-69	Added Taps - Eros. Bridge, Pump House, Septic Tank & Power Pole Line	
5-19-69	Changed all Parcel identification Numbers	
HOCKING TOWNSHIP RD 52A		

FALLS TWP. R-17-W, T-14-N, SEC. 15

92

26