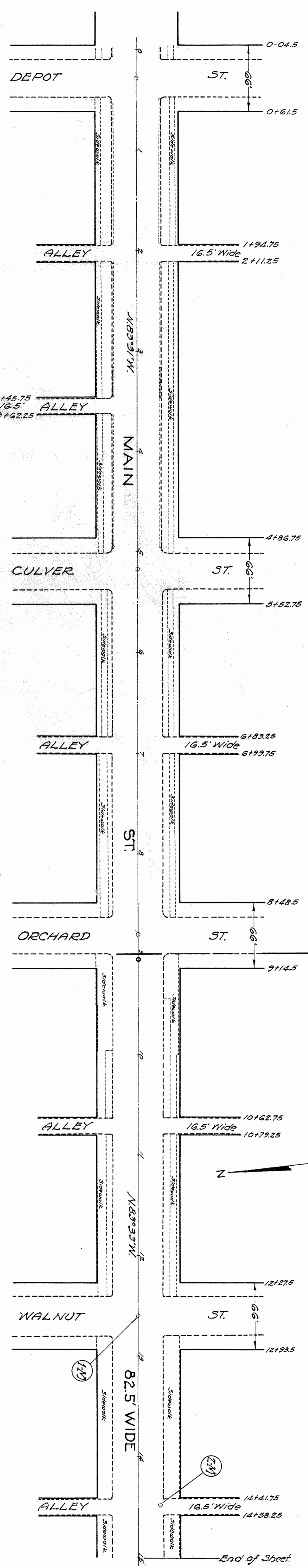


PI = 91.052
Δ = 0.0217

10 OHIO 1943 7 3

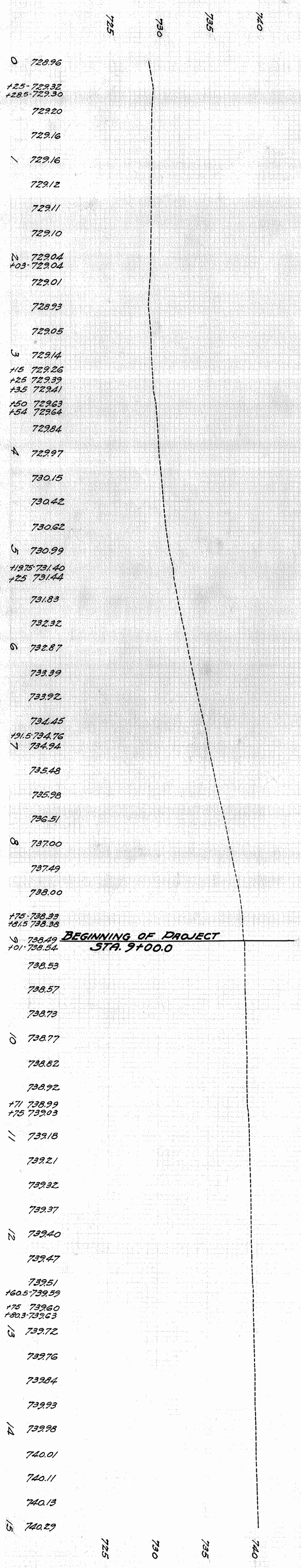
S.H. 155 - SEC. "LOGAN (PP)"
S.H. 360 - SEC. "LOGAN (PP)"
- HOCKING COUNTY -



B.M. CROSS ON CONC.
SIDEWALK 51M CODE
MAIN & DEPOT STS.
ELEV. 729.17

B.M. CROSS ON CONC.
SIDEWALK 51M CODE
MAIN & CULVER ST.
ELEV. 731.08

RESETTING MANHOLES				
No.	Station	Side	Units	
1-M	12+60	E	1	
2-M	14+48	LH	1	
Total				2



- 0 728.96
- +2.5-729.32
- +28.5-729.30
- 729.20
- 729.16
- 729.16
- 729.12
- 729.11
- 729.10
- 729.04
- +0.3-729.04
- 729.01
- 728.93
- 729.05
- 729.14
- 115 729.26
- +2.5 729.39
- +3.5 729.41
- 150 729.63
- +5.4 729.64
- 729.84
- 729.97
- 730.15
- 730.42
- 730.62
- 730.99
- +19.75 731.40
- +2.5 731.44
- 731.83
- 732.32
- 732.87
- 733.39
- 733.92
- 734.45
- +19.5 734.76
- 734.94
- 735.48
- 735.98
- 736.51
- 737.00
- 737.49
- 738.00
- +7.5 738.33
- +81.5 738.38
- 738.49
- +0.1 738.54
- 738.53
- 738.57
- 738.73
- 738.77
- 738.82
- 738.92
- +7.1 738.99
- +7.5 739.03
- 739.18
- 739.21
- 739.32
- 739.37
- 739.40
- 739.47
- 739.51
- +60.5 739.59
- +7.5 739.60
- +80.3 739.63
- 739.72
- 739.76
- 739.84
- 739.93
- 739.98
- 740.01
- 740.11
- 740.13
- 740.29

725 730 735 740 745