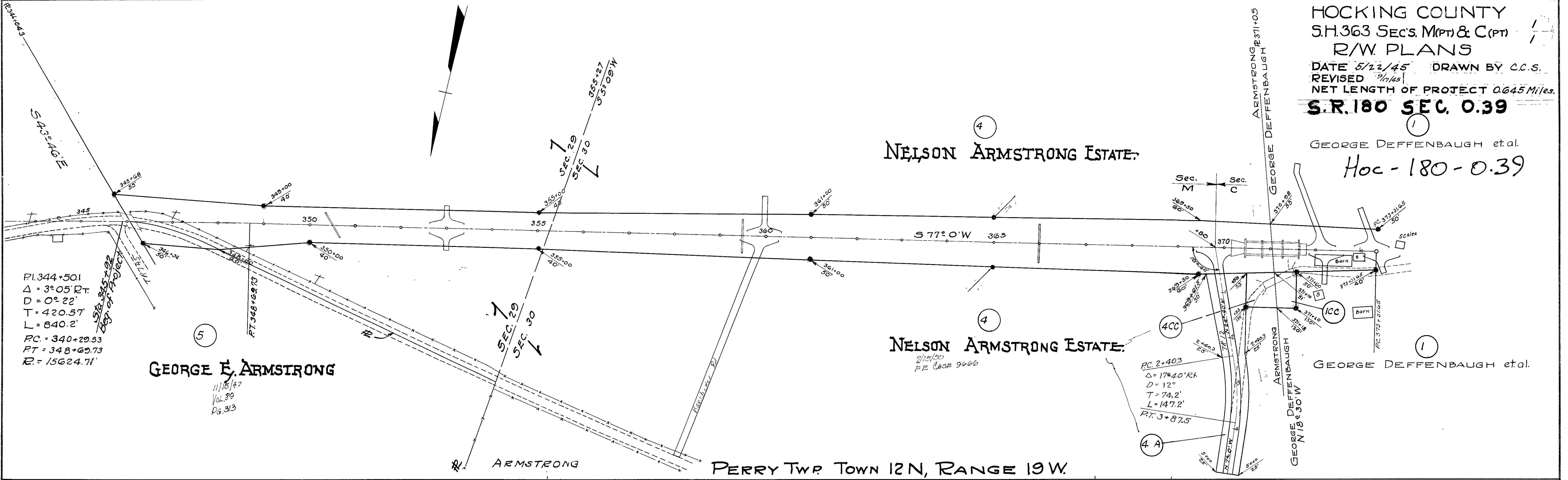


HOCKING COUNTY  
 S.H. 363 SEC'S. M(P) & C(P)  
 R/W PLANS  
 DATE 5/22/45 DRAWN BY C.C.S.  
 REVISED 9/1/45  
 NET LENGTH OF PROJECT 0.645 Miles.  
**S.R. 180 SEC. 0.39**

GEORGE DEFFENBAUGH et al.  
 Hoc-180-0.39

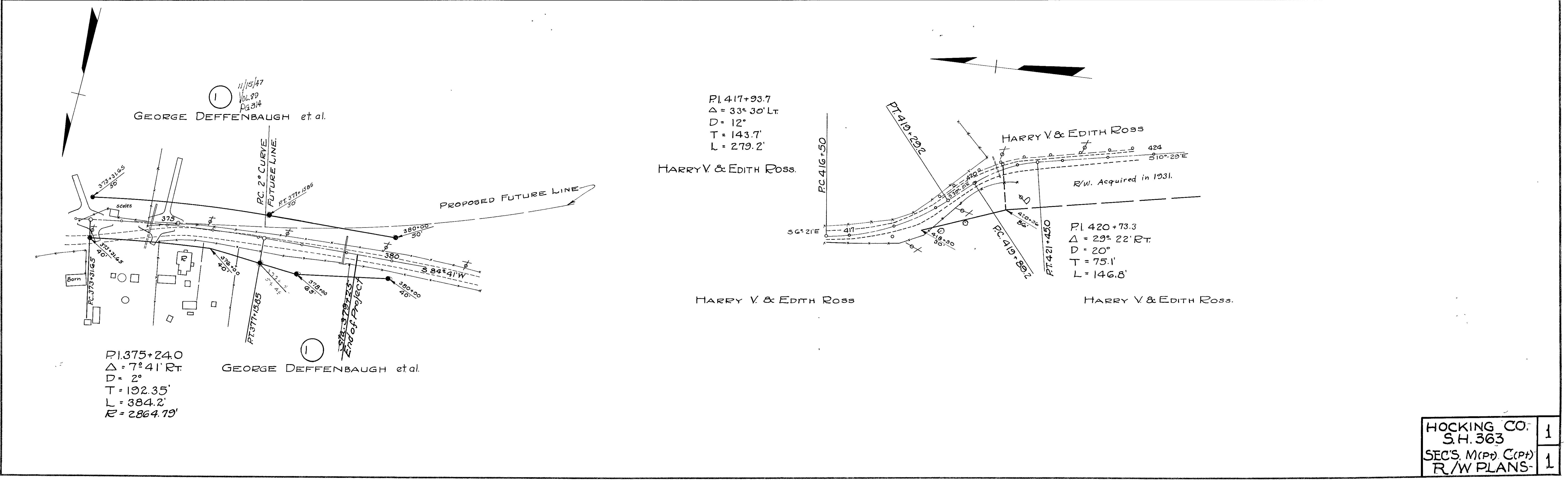


PI. 344+50.1  
 $\Delta = 3^\circ 05' \text{ RT}$   
 $D = 0^\circ 22'$   
 $T = 420.57'$   
 $L = 840.2'$   
 $PC = 340+29.53$   
 $PT = 348+69.73$   
 $R = 15624.71'$

GEORGE E. ARMSTRONG  
 11/18/47  
 Vol. 89  
 Pg. 313

PI. 2+40.3  
 $\Delta = 17^\circ 40' \text{ RT}$   
 $D = 12^\circ$   
 $T = 74.2'$   
 $L = 147.2'$   
 $PT = 3+87.5$

PERRY TWP. TOWN 12N, RANGE 19W.



PI. 375+24.0  
 $\Delta = 7^\circ 41' \text{ RT}$   
 $D = 2^\circ$   
 $T = 192.35'$   
 $L = 384.2'$   
 $R = 2864.19'$

GEORGE DEFFENBAUGH et al.

PI. 417+93.7  
 $\Delta = 33^\circ 30' \text{ LT}$   
 $D = 12^\circ$   
 $T = 143.7'$   
 $L = 279.2'$

HARRY V. & EDITH ROSS.

PI. 420+73.3  
 $\Delta = 29^\circ 22' \text{ RT}$   
 $D = 20^\circ$   
 $T = 75.1'$   
 $L = 146.8'$

HARRY V. & EDITH ROSS.

HOCKING CO.	1
S.H. 363	
SEC'S. M(P) C(P)	1
R/W PLANS	