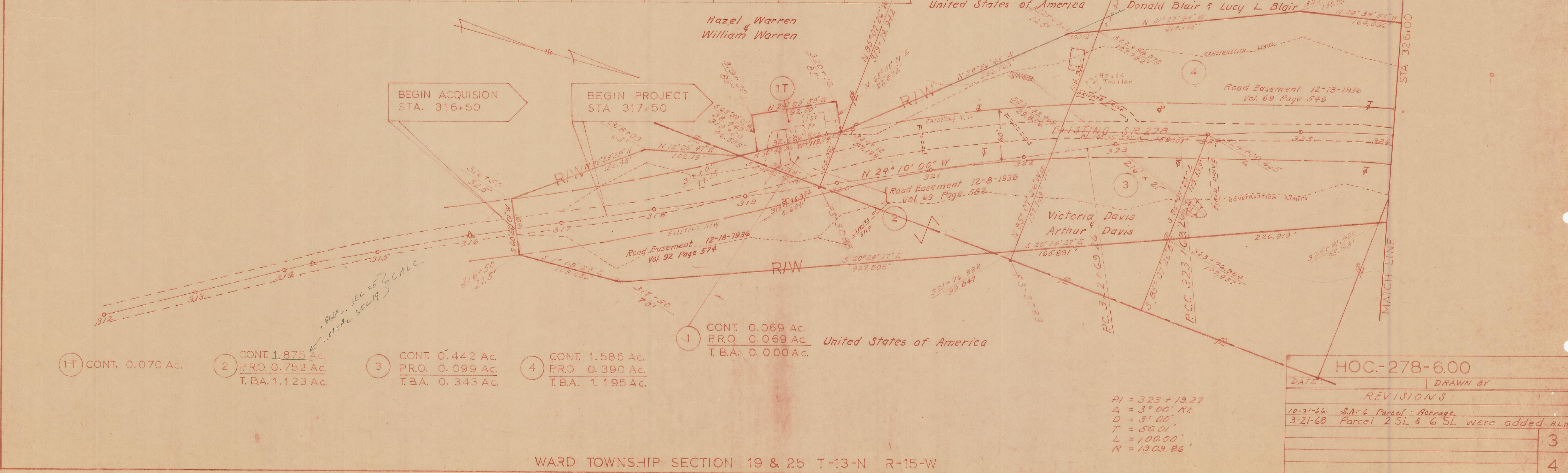


Parcel No.	OWNER	TOTAL NO. COMPLETE TAKES			TOTAL PARCELS WITH STRUCTURES INVOLVED -							TOTAL NO. OF LANDLOCKED PARCELS -				
		DEED BOOK	RECORD PAGE	DATE	DEED AREA	TOTAL PRO	TOTAL TAKE	PRO 'N TAKE	NET TAKE	NET RES. LT.	NET RES. RT.	BLDGS TO BE ACQD.	SHEET NO.	REMARKS	OTHER DESIGNATED EASEMENTS	TYPE FUND
1	Hazel Warren & William Warren	85	390	11-17-45	12.84	.069	.069	.069	0000	12.771			3			
1-T	" " " " "											1	3			
2	United States of America	92 72	574 461	1-19-50 5-20-36	5.00 673.67	*	1.875	.752	1.123	*	*	0	3	* non-determinable	SA-2 Road Vacation	
2-1	" " " " "	102 90	8 613	11-20-55 7-12-48	22.32 261.50	*	4.555	1.074	3.481	*	*	0	4	* non-determinable		
2-2	" " " " "	73	436	4-7-37	17.50		1.651	0.523	1.128	*	*	0	4	* non-determinable		
2-2T	" " " " "	72	461	5-20-36	673.67		0.094					0	4			
3	Victoria Davis & Arthur Davis	73	578	8-3-40	0.50	.099	0.442	.099	0.343		0.058	0	3			
4	Donald Blair & Lucy L. Blair	102	220	7-23-55	3.09	.390	1.585	.390	1.195	0.825	0.680	1	3	Building on US Govt. Property		
5	Roy Keiffer	89	363	9-20-47	0.50	.090	0.090	.090	0.000		0.410	0	4			
6	Winifred Nutter	108	203	4-2-60	25.07	2.479	4.838	1.549	3.309	3.657	15.625	0	4		SA-6 Road Vacation - 0.238 Ac.	
6X	" " " " "						0.596					0	4			
6X-1	" " " " "						0.142					0	4			
6X-2	" " " " "						0.010					0	4			
6-T	" " " " "						0.040					0	4			
7	Approved Bancredit Corporation	114	163	12-12-63	2.00		0.578	0.000	0.578		1.422	0	4			
8	Charles H. Graham	89	293	4-10-45	2.00		0.216	0.000	0.216		1.7	1	4			
8X	" " " " "						0.023					0	4			
2SL	United States of America	92 72	574 461	1-19-50 5-20-36	5.00 673.67		0.201		0.201							
6SL	Winifred Nutter	108	203	4-2-60	25.07		0.056		0.056							



- 1-T CONT. 0.070 Ac.
- 2 CONT. 1.875 Ac.
PRO. 0.752 Ac.
T.B.A. 1.123 Ac.
- 3 CONT. 0.442 Ac.
PRO. 0.099 Ac.
T.B.A. 0.343 Ac.
- 4 CONT. 1.585 Ac.
PRO. 0.390 Ac.
T.B.A. 1.195 Ac.

1 CONT. 0.069 Ac.
PRO. 0.069 Ac.
T.B.A. 0.000 Ac. United States of America

PI = 325 + 19.27
Δ = 3° 00' RT
D = 3° 00'
T = 50.01'
L = 100.00'
R = 1909.86'

HOC-278-6.00

DATE: _____ DRAWN BY: _____

REVISIONS:

- 10-31-66 SA-6 Parcel - Acreage
- 3-21-68 Parcel 2 SL & 6 SL were added H.L.H.

3
4