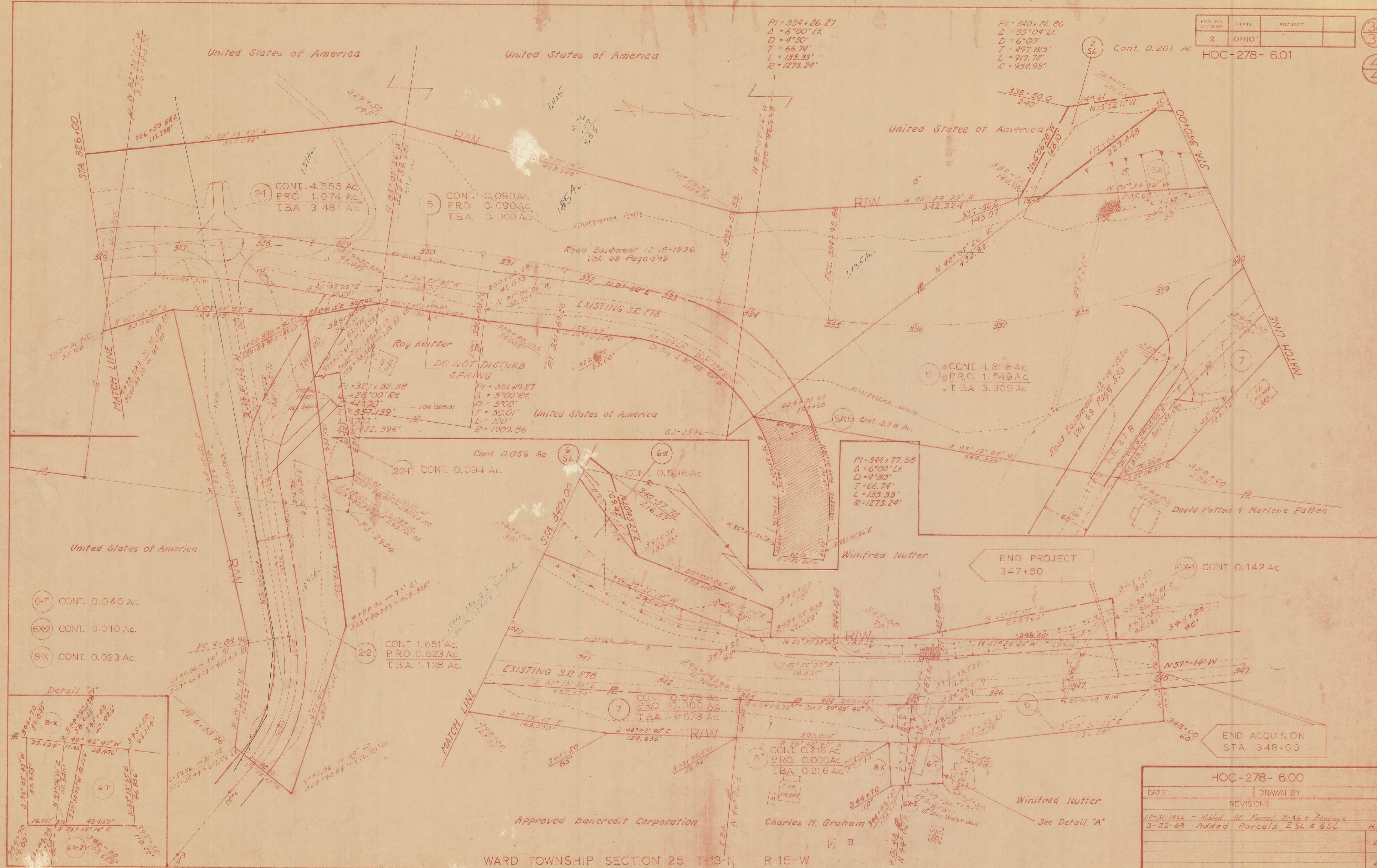


HOC-278- 6.01



PI = 334 + 26.27
 $\Delta = 6^{\circ}00' Lt.$
 $D = 4^{\circ}30'$
 $T = 66.74'$
 $L = 133.33'$
 $R = 1273.24'$

PI = 340 + 26.86
 $\Delta = 55^{\circ}04' Lt.$
 $D = 6^{\circ}00'$
 $T = 497.815'$
 $L = 917.78'$
 $R = 954.93'$

PI = 344 + 77.38
 $\Delta = 6^{\circ}00' Lt.$
 $D = 4^{\circ}30'$
 $T = 66.74'$
 $L = 133.33'$
 $R = 1273.24'$

2-1 CONT. 4.555 Ac.
 PRO. 1.074 Ac.
 T.B.A. 3.481 Ac.

5 CONT. 0.090 Ac.
 PRO. 0.090 Ac.
 T.B.A. 0.000 Ac.

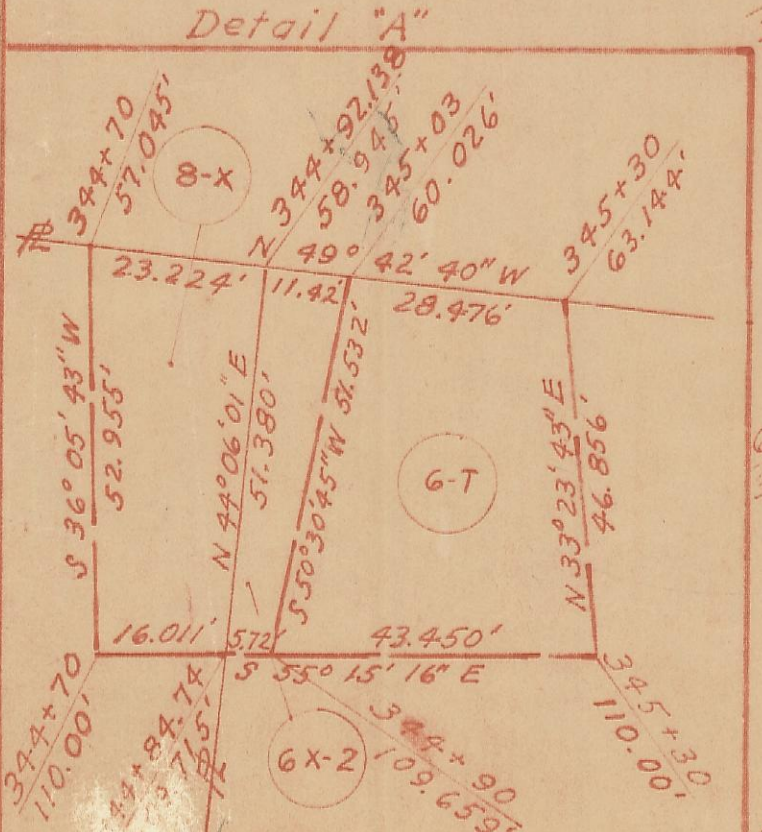
6 CONT. 4.878 Ac.
 PRO. 1.549 Ac.
 T.B.A. 3.309 Ac.

DO NOT DISTURB SPRING
 PI = 331 + 49.27
 $\Delta = 26^{\circ}00' Rt.$
 $D = 3^{\circ}00'$
 $T = 50.01'$
 $L = 100'$
 $R = 1909.86'$

2-2 CONT. 1.651 Ac.
 PRO. 0.523 Ac.
 T.B.A. 1.128 Ac.

6X CONT. 0.596 Ac.

- 6-T CONT. 0.040 Ac.
- 6X-2 CONT. 0.010 Ac.
- 8-X CONT. 0.023 Ac.



HOC-278- 6.00	
DATE:	DRAWN BY:
REVISIONS:	
10-31-1966 - Added All Parcel 8-A6 + Accrags	
3-22-68 Added Parcels 25L & 6SL	H.L.H.
	4
	4

WARD TOWNSHIP SECTION 25 T-13-N R-15-W

R/W PLAN STA. 326+00 TO 349+00