



ITEM 404 ASPHALT CONCRETE, AC-20 (T-2")
 AREA = (12' x 32') / 2 x 10 = 220 SQ.FT.
 VOLUME = 220 X 2/12 / 27 = 1.36 CU. YDS.
 2 CU. YDS.

ITEM 304 AGGREGATE BASE (T-6")
 VOLUME = 220 X 6/12 / 27 = 4.07 CU. YDS.
 4 CU. YDS.

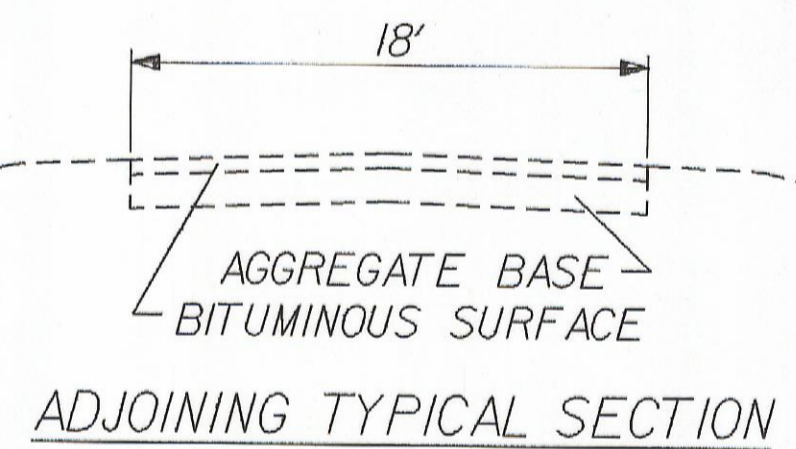
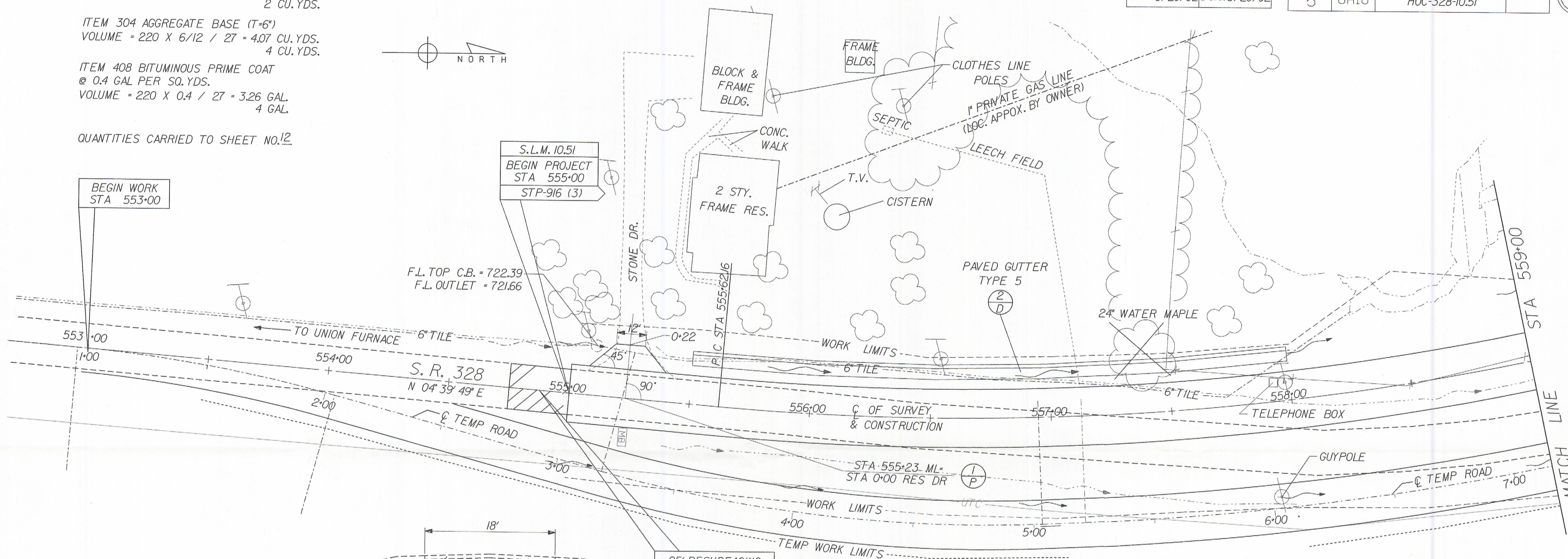
ITEM 408 BITUMINOUS PRIME COAT
 @ 0.4 GAL PER SQ. YDS.
 VOLUME = 220 X 0.4 / 27 = 3.26 GAL.
 4 GAL.

QUANTITIES CARRIED TO SHEET NO. 12

Calculated By: GRS
 Date: 3/20/92

Checked By: KDD
 Date: 3/20/92

FED. RD. DIVISION	STATE	PROJECT
5	OHIO	HOC-328-10.51



25' RESURFACING
 BEGIN STA 554+75
 END STA 555+00



FOR PAVEMENT ELEVATIONS SEE SHEET NO. 9
 FOR QUANTITIES SEE SUB-SUMMARY SHEET NO. 10
 FOR TEMPORARY ROAD LAYOUT SEE SHEET NO. 28

