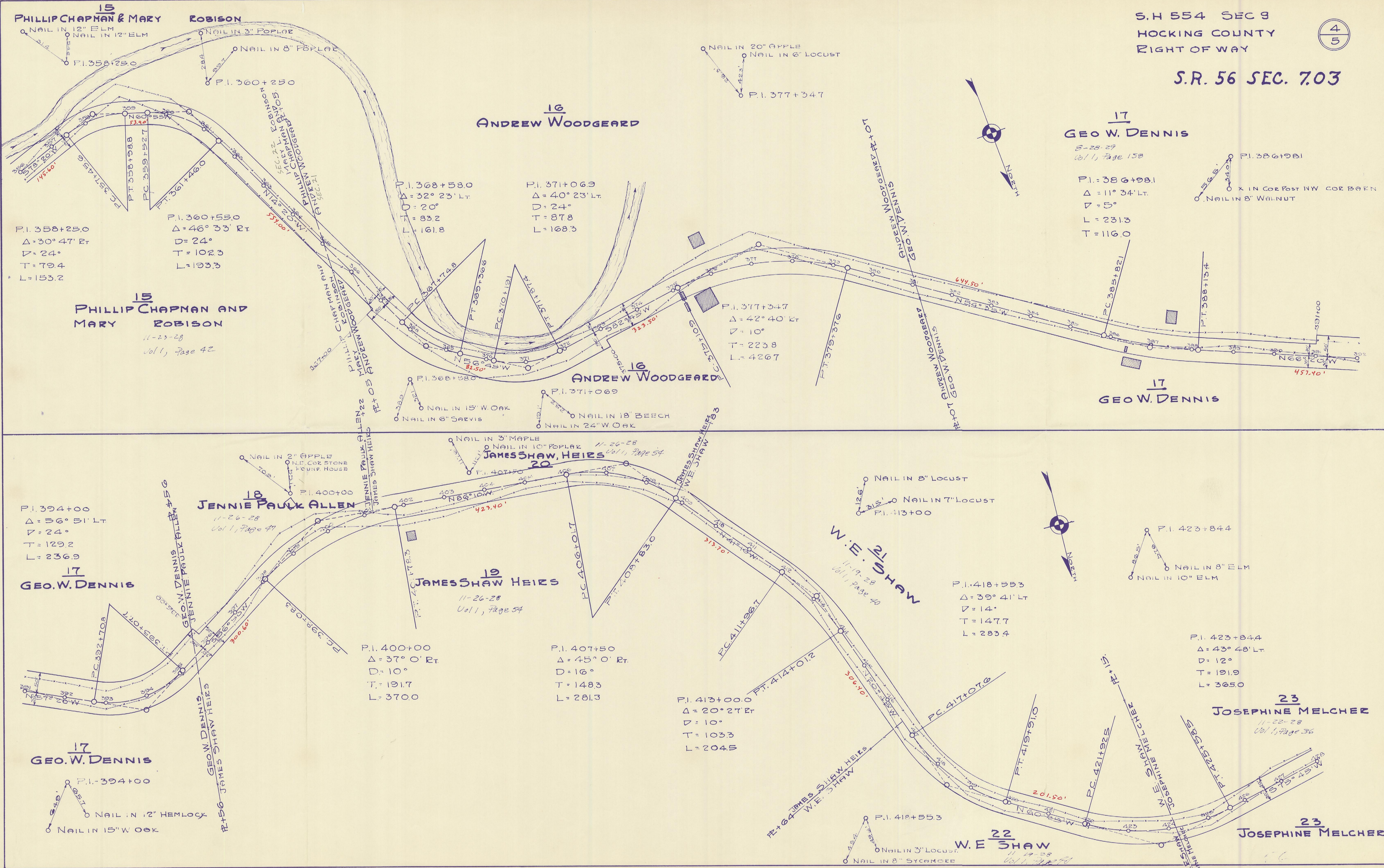


S.R. 56 SEC. 7.03



**15**  
**PHILLIP CHAPMAN & MARY ROBISON**  
NAIL IN 12" ELM  
NAIL IN 12" ELM  
P.I. 358+25.0  
NAIL IN 3" POPLAR  
NAIL IN 8" POPLAR  
P.I. 360+25.0  
SINNEBONN MERRILL  
ANDREW WOODGEARD  
SINNEBONN MERRILL  
ANDREW WOODGEARD  
SINNEBONN MERRILL  
ANDREW WOODGEARD  
P.I. 358+25.0  
 $\Delta = 30^\circ 47' \text{ Rt}$   
 $D = 24^\circ$   
 $T = 79.4$   
 $L = 153.2$   
P.I. 360+55.0  
 $\Delta = 46^\circ 33' \text{ Rt}$   
 $D = 24^\circ$   
 $T = 102.3$   
 $L = 133.3$   
P.I. 368+58.0  
 $\Delta = 32^\circ 23' \text{ Lt}$   
 $D = 20^\circ$   
 $T = 83.2$   
 $L = 161.8$   
P.I. 371+06.9  
 $\Delta = 40^\circ 23' \text{ Lt}$   
 $D = 24^\circ$   
 $T = 87.8$   
 $L = 168.3$   
P.I. 377+34.7  
 $\Delta = 42^\circ 40' \text{ Rt}$   
 $D = 10^\circ$   
 $T = 223.8$   
 $L = 426.7$   
P.I. 386+98.1  
 $\Delta = 11^\circ 34' \text{ Lt}$   
 $D = 5^\circ$   
 $L = 231.3$   
 $T = 116.0$

**15**  
**PHILLIP CHAPMAN AND MARY ROBISON**  
11-23-28  
Vol 1, Page 42

**17**  
**GEO. W. DENNIS**  
8-28-29  
Vol 1, Page 158  
P.I. 386+98.1  
 $\Delta = 11^\circ 34' \text{ Lt}$   
 $D = 5^\circ$   
 $L = 231.3$   
 $T = 116.0$

**16**  
**ANDREW WOODGEARD**

**17**  
**GEO. W. DENNIS**

P.I. 394+00  
 $\Delta = 56^\circ 51' \text{ Lt}$   
 $D = 24^\circ$   
 $T = 129.2$   
 $L = 236.9$

**17**  
**GEO. W. DENNIS**

**18**  
**JENNIE PAULK ALLEN**  
11-26-28  
Vol 1, Page 47

**19**  
**JAMES SHAW HEIRS**  
11-26-28  
Vol 1, Page 54

P.I. 400+00  
 $\Delta = 37^\circ 0' \text{ Rt}$   
 $D = 10^\circ$   
 $T = 191.7$   
 $L = 370.0$

P.I. 407+50  
 $\Delta = 45^\circ 0' \text{ Rt}$   
 $D = 16^\circ$   
 $T = 148.3$   
 $L = 281.3$

P.I. 413+00.0  
 $\Delta = 20^\circ 27' \text{ Rt}$   
 $D = 10^\circ$   
 $T = 103.3$   
 $L = 204.5$

P.I. 418+55.3  
 $\Delta = 39^\circ 41' \text{ Lt}$   
 $D = 14^\circ$   
 $T = 147.7$   
 $L = 283.4$

**21**  
**W. E. SHAW**  
11-19-28  
Vol 1, Page 40

P.I. 423+84.4  
 $\Delta = 43^\circ 48' \text{ Lt}$   
 $D = 12^\circ$   
 $T = 191.9$   
 $L = 365.0$

**23**  
**JOSEPHINE MELCHER**  
11-22-28  
Vol 1, Page 36

**17**  
**GEO. W. DENNIS**

P.I. 394+00  
NAIL IN 12" HEMLOCK  
NAIL IN 15" W OAK

**22**  
**W. E. SHAW**  
11-19-28  
Vol 1, Page 40  
NAIL IN 3" LOCUST  
NAIL IN 8" SYCAMORE

**23**  
**JOSEPHINE MELCHER**