

HOCKING COUNTY
HOC-595-(3.75)(4.70) PART II
R/W PLANS

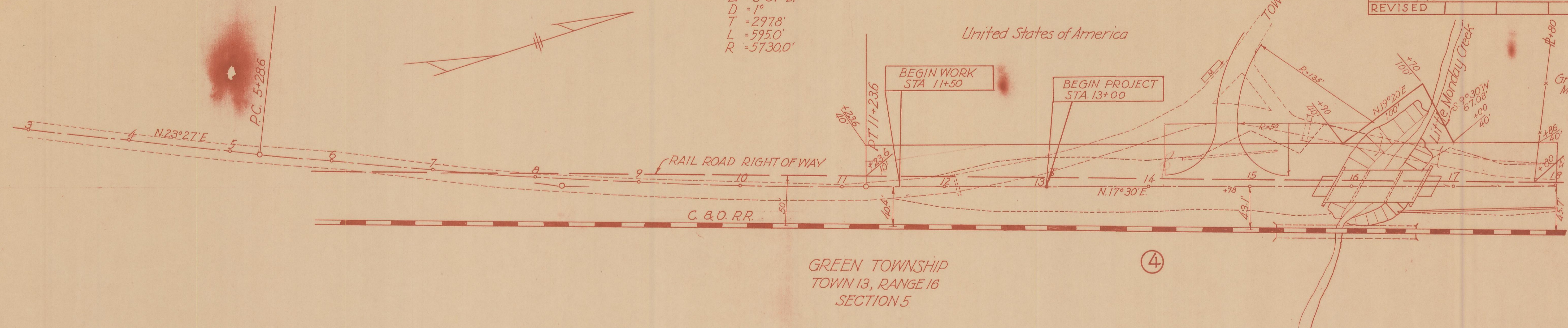
2
2

DATE 7-15-55 DRAWN BY L.S.
REVISI

Total 0.50 Acres
E.R.O. 0.35
Net 0.15 Acres

PI = 8+26.4
 $\Delta = 5^{\circ}57' L+$
D = 1'
T = 297.8'
L = 595.0'
R = 5730.0'

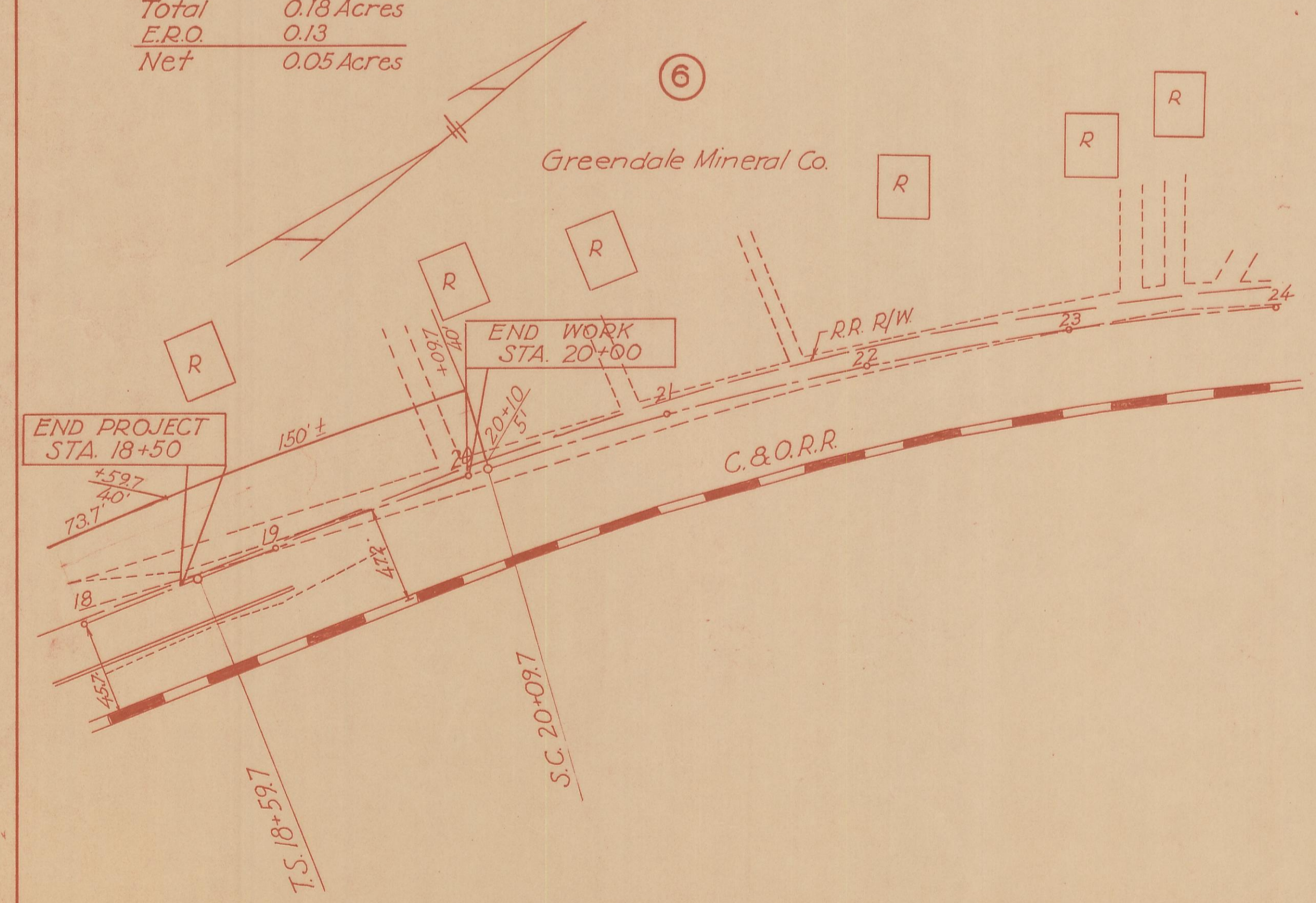
5



4

Total 0.18 Acres
E.R.O. 0.13
Net 0.05 Acres

6



PI = 25+63.9
 $\Delta = 44^{\circ}45' R+$
D = 3'45"
Ts+c = 704.2'
Lc = 1046'
Ls = 150'
R = 1527.89'

2
2