

HOCKING COUNTY
HOC-595-5.76
R/W PLANS

2
2

DATE 11-29-56 DRAWN BY O.D.S.
REVISED 2-13-57 3-8-57

United States Government

Total 0.11
E.R.O. 0.04
Net 0.07 Ac.
R1=335+66.36
D=20'5" Lt.
D=2'15"
T=30.01'
L=100.0'
R=2546.48'

R1=337+49.33
D=7°58' Lt.
D=2'15"
T=132.98'
L=265.56'
R=1509.86'

Total 1.70
E.R.O. 0.77
Net 0.93 Ac.

R1=339+31.32
D=2'15" Lt.
D=2'15"
T=50.01'
L=100.0'
R=2546.48'

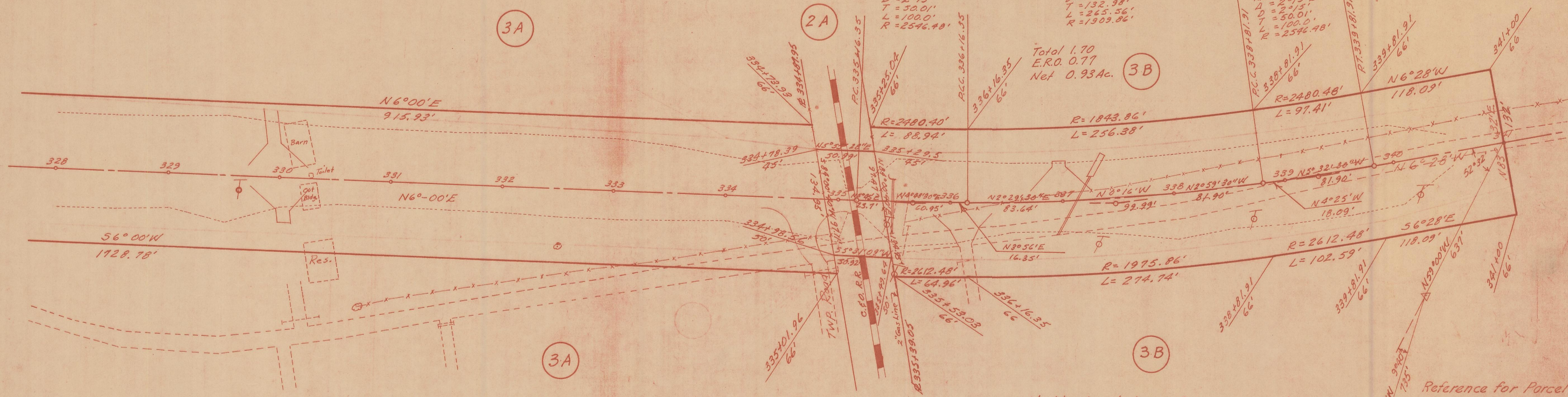
3A

2A

3B

3A

3B



United States Government

WARD TOWNSHIP, SECTION 36, T13N, R15W

Reference for Parcel #3 B description
#1-29.75