

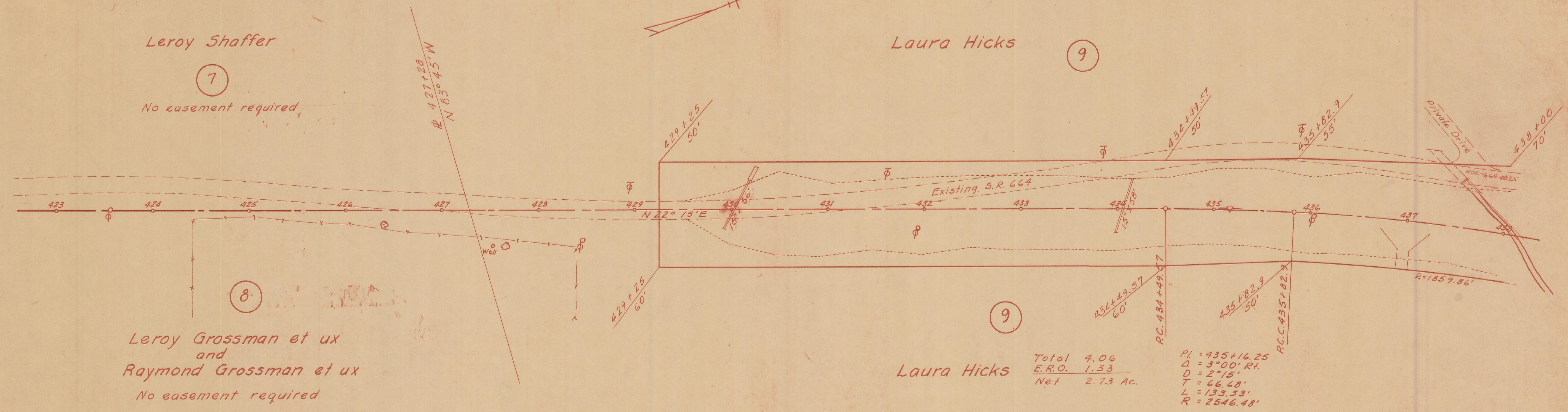
Leroy Shaffer

7

No easement required

Laura Hicks

9



Leroy Grossman et ux  
and  
Raymond Grossman et ux

8

No easement required

Laura Hicks

9

Total 4.06  
E.R.O. 1.33  
Net 2.73 Ac.

PI = 435+16.25  
Δ = 3°00' Lt.  
D = 2°15'  
T = 66.68'  
L = 133.33'  
R = 2546.48'

WASHINGTON TOWNSHIP, SECTION 7, T13N, R17W

Laura Hicks

9X

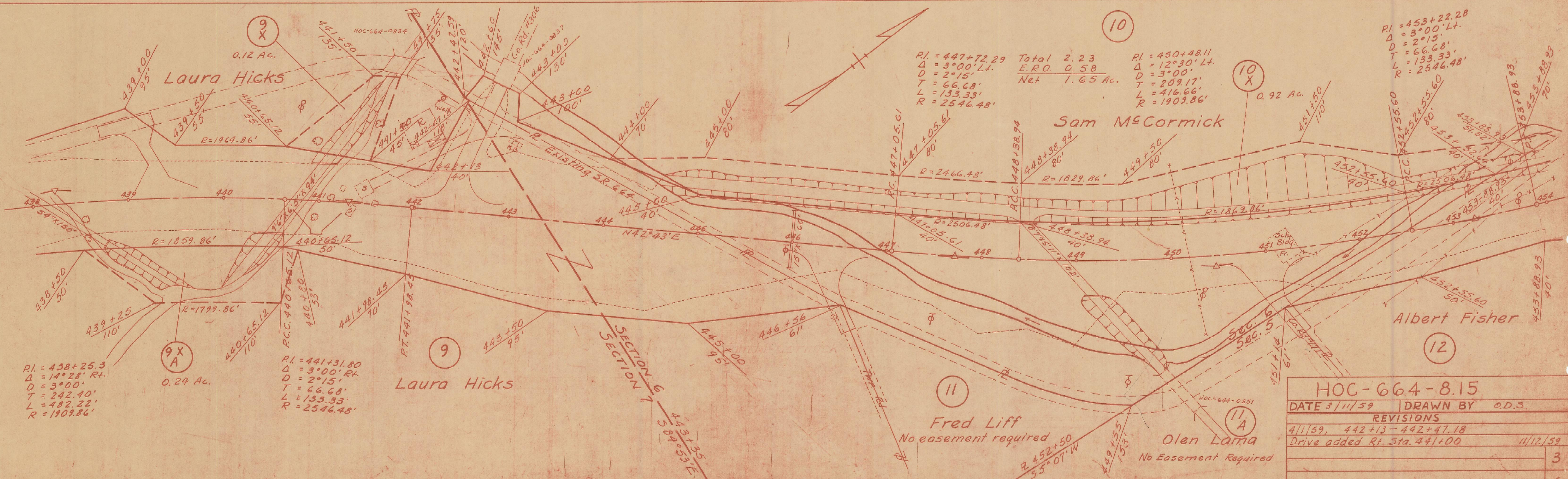
0.12 Ac.

Sam McCormick

10

10X

0.92 Ac.



PI = 447+72.29  
Δ = 3°00' Lt.  
D = 2°15'  
T = 66.68'  
L = 133.33'  
R = 2546.48'

Total 2.23  
E.R.O. 0.58  
Net 1.65 Ac.

PI = 450+48.11  
Δ = 12°30' Lt.  
D = 3°00'  
T = 209.17'  
L = 416.66'  
R = 1903.86'

PI = 453+22.28  
Δ = 3°00' Lt.  
D = 2°15'  
T = 66.68'  
L = 133.33'  
R = 2546.48'

PI = 438+25.3  
Δ = 14°28' Rt.  
D = 3°00'  
T = 242.40'  
L = 482.22'  
R = 1909.86'

9X A

0.24 Ac.

PI = 441+31.80  
Δ = 3°00' Rt.  
D = 2°15'  
T = 66.68'  
L = 133.33'  
R = 2546.48'

Laura Hicks

Fred Liff  
No easement required

11

Olen Lania  
No Easement Required

11A

WASHINGTON TOWNSHIP, SECTIONS 5, 6 & 7, T13N, R17W

HOC-664-8.15	
DATE 3/11/59	DRAWN BY O.D.S.
REVISIONS	
4/1/59, 442+13-442+47.18	
Drive added Rt. Sta. 441+00	11/12/59
	3
	6