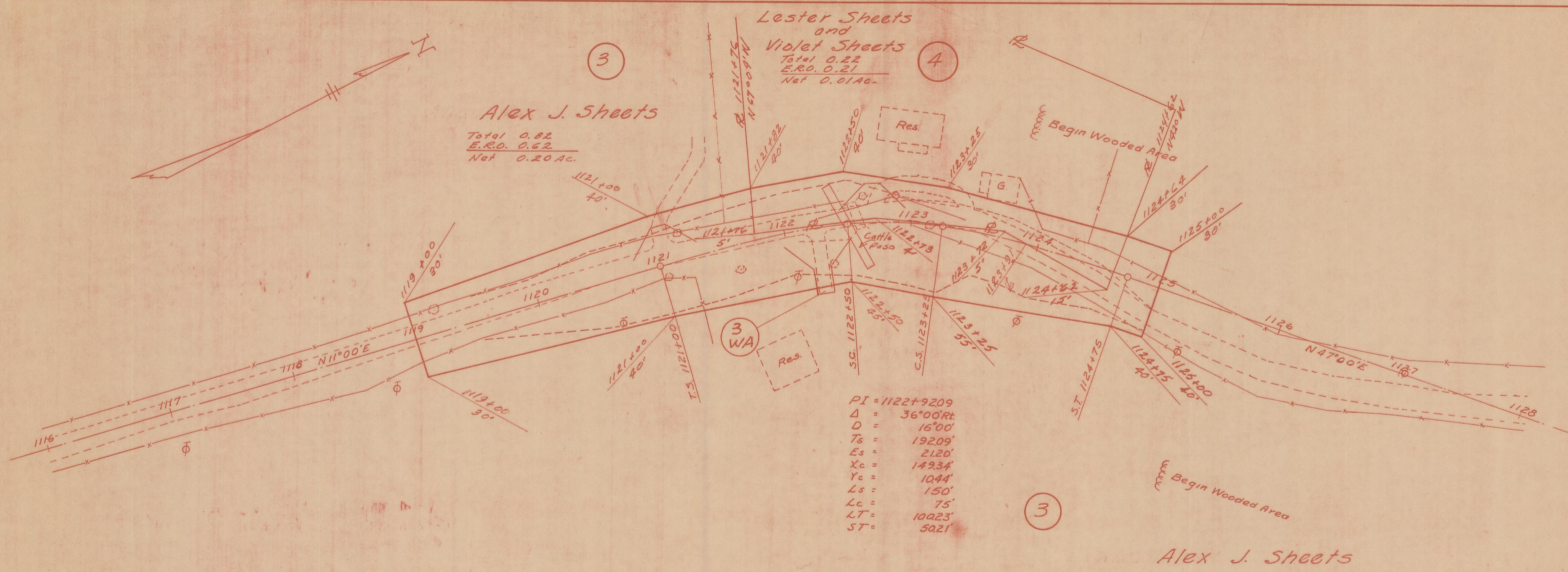


HOCKING COUNTY
HOC-664-21.23
R/W PLANS

2
4

DATE 8-9-55 DRAWN BY
REVISED 7-31-55



Alex J. Sheets
Total 0.82
E.R.O. 0.62
Net 0.20 Ac.

Lester Sheets
and
Violet Sheets
Total 0.22
E.R.O. 0.21
Net 0.01 Ac.

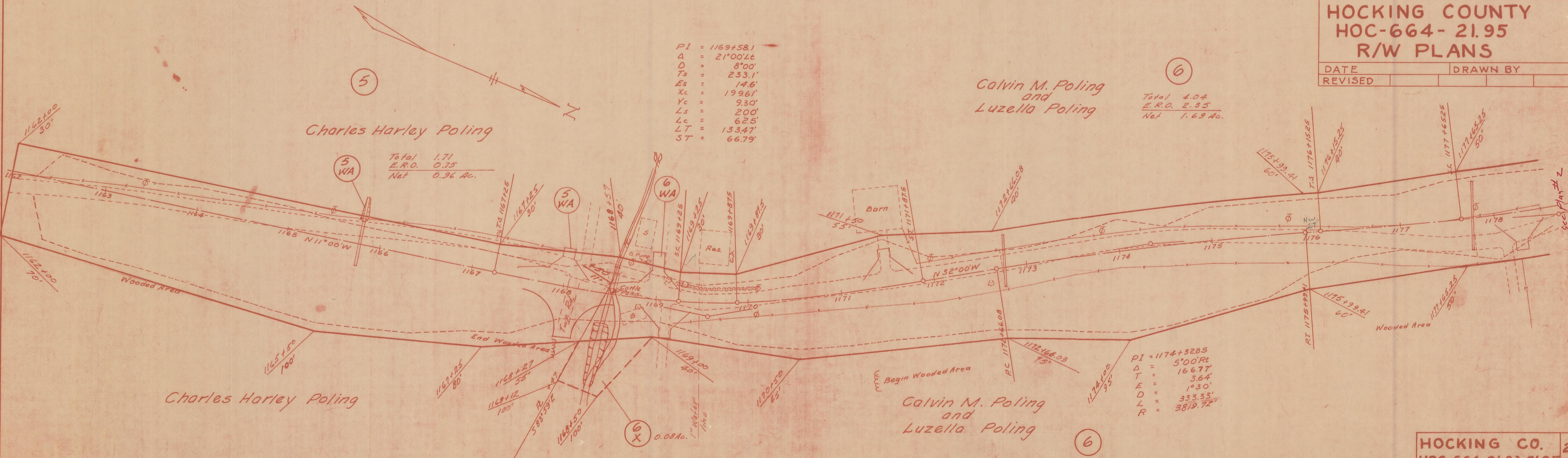
PI = 1122+9209
Δ = 36°00' Rt
D = 16'00"
Ts = 19209'
Es = 2120'
Xc = 14934'
Yc = 1044'
Ls = 150'
Lc = 75'
LT = 10023'
ST = 5021'

Marion Twp., Sec. 22, T 15N, R 17W

HOCKING COUNTY
HOC-664-21.95
R/W PLANS

2
4

DATE DRAWN BY
REVISED



Charles Harley Poling

Total 1.71
E.R.O. 0.75
Net 0.96 Ac.

PI = 1169+581
Δ = 21°00' Lt
D = 8'00"
Ts = 233.1'
Es = 14.6'
Xc = 19961'
Yc = 930'
Ls = 200'
Lc = 62.5'
LT = 13347'
ST = 66.79'

Calvin M. Poling
and
Luzella Poling

Total 4.04
E.R.O. 2.35
Net 1.69 Ac.

Charles Harley Poling

Calvin M. Poling
and
Luzella Poling

PI = 1174+3285
Δ = 5°00' Rt
D = 166.77'
T = 3.64'
E = 1°30'
L = 333.33'
R = 3819.72'

Marion Twp., Sec. 15, T 15N, R 17W

HOCKING CO.
HOC-664-21.23-21.95
R/W PLAN

2
4