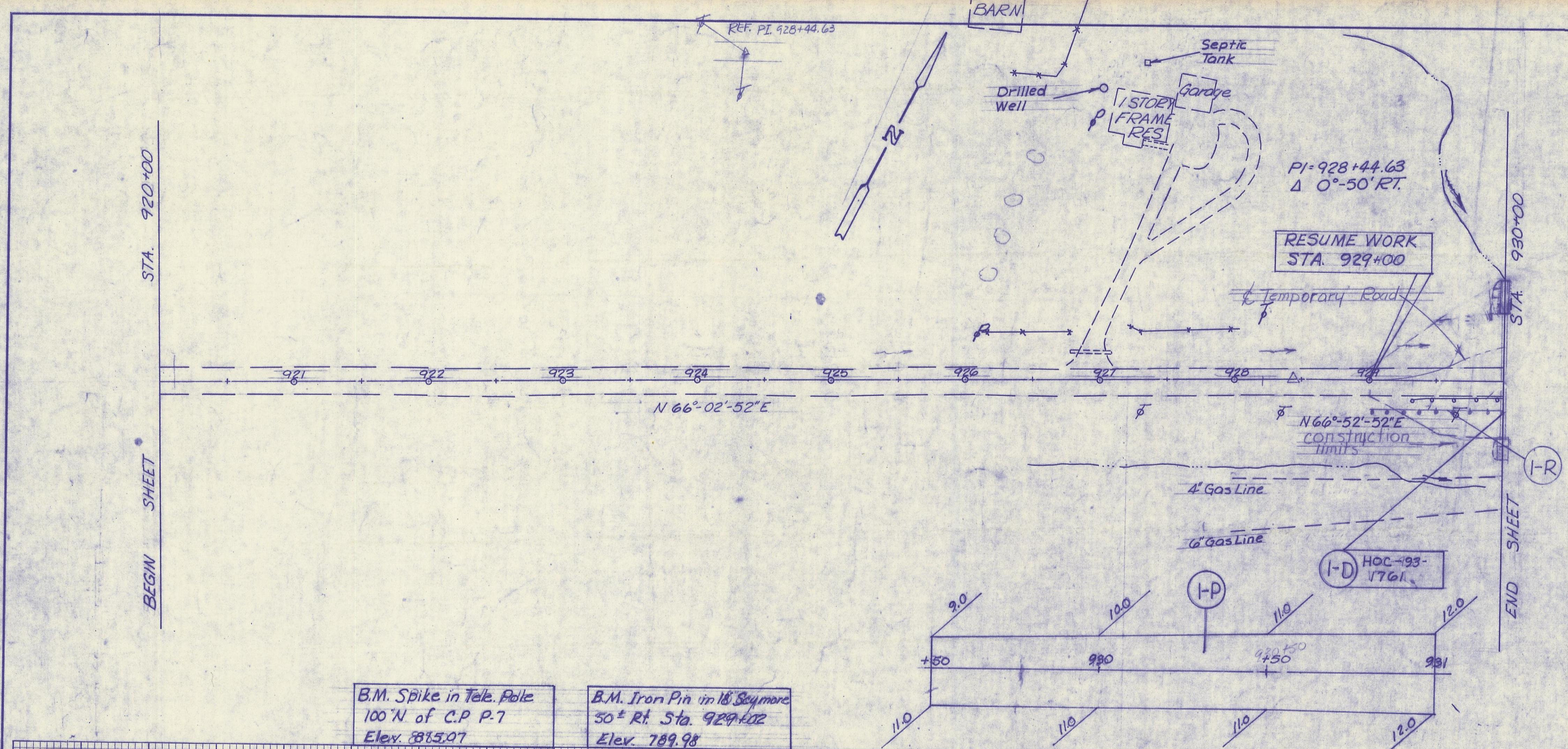


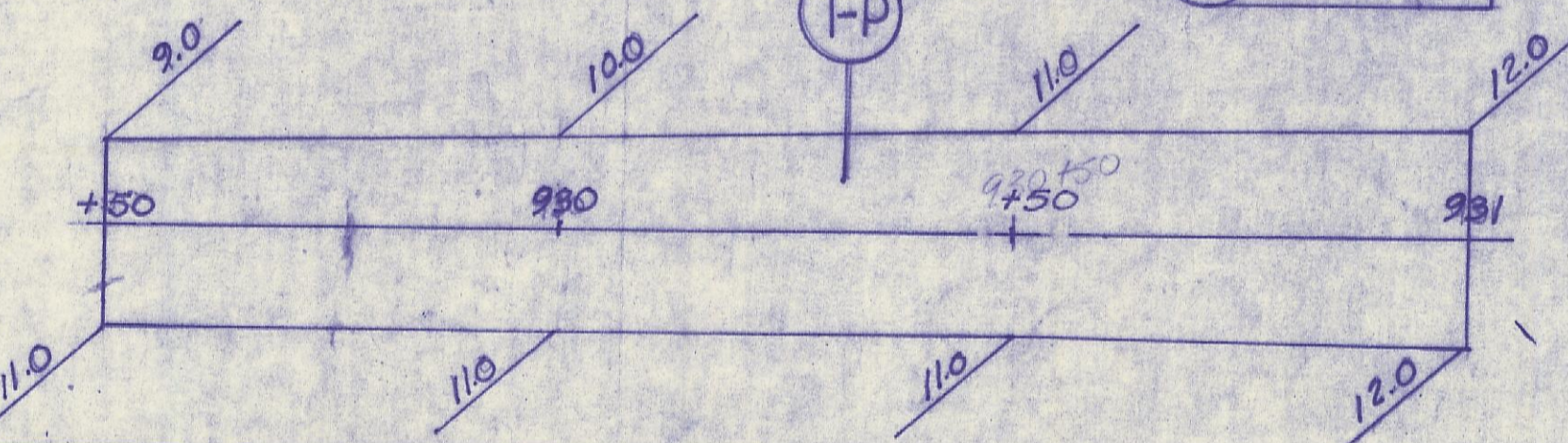
FED. RD. DIVISION	STATE	PROJECT
2	OHIO	HOC-93-(16.35)(17.63)

18

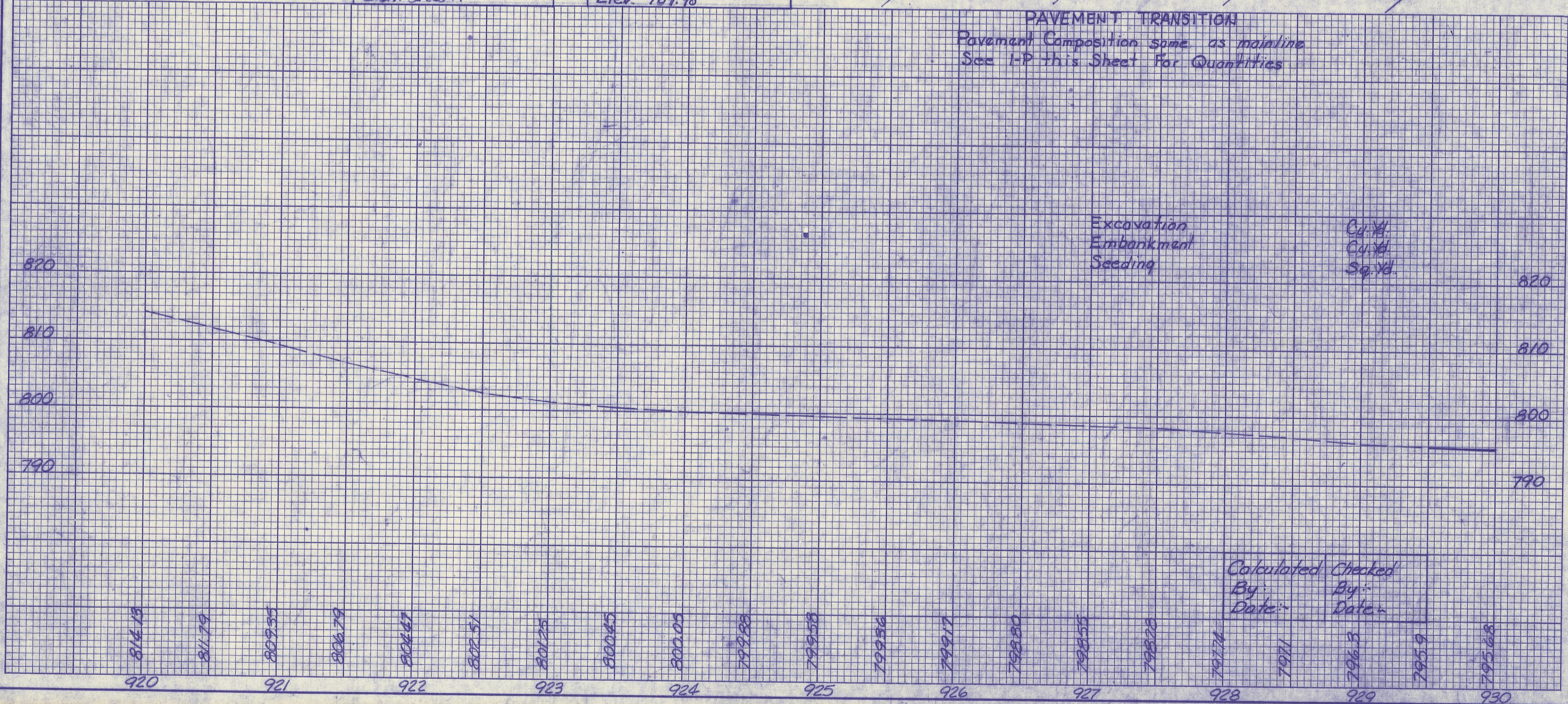


B.M. Spike in Tele. Pole
100' N of C.P. P-7
Elev. 815.07

B.M. Iron Pin in 18" Squares
50' Rt. Sta. 929+02
Elev. 789.98



PAVEMENT TRANSITION
Pavement Composition same as mainline
See I-P this Sheet For Quantities



ESTIMATED QUANTITIES

REF. NO.	STATION TO STATION	SIDE	See Sheet No	ITEM	UNIT	QUANTITY	TOTALS
I-R	ROADWAY 929+00 to 930+00	RT.		404 Asphalt Concrete Type 5	Cu. Yd.	125	
Z-R	929+32 to 930+00	RL		606 Guard Rail Type 5	Lin. Ft.	75	
I-D	DRAINAGE 930+00 (Culvert)	REL	28	606 Anchor Assembly	Each	1	
				301 Bituminous Base	Sq. Yd.	17.6	17.6
				602 Concrete	Cu. Yd.	602	
				203 Subgrade	Sq. Yd.	3671	
				601 Riprap	Sq. Yd.	21	
				602 Concrete	Cu. Yd.	2.20	2.20
				600 Sealing	Sq. Yd.	8	
						94	94

Calculated By: [Signature] Date: [Date]
Checked By: [Signature] Date: [Date]