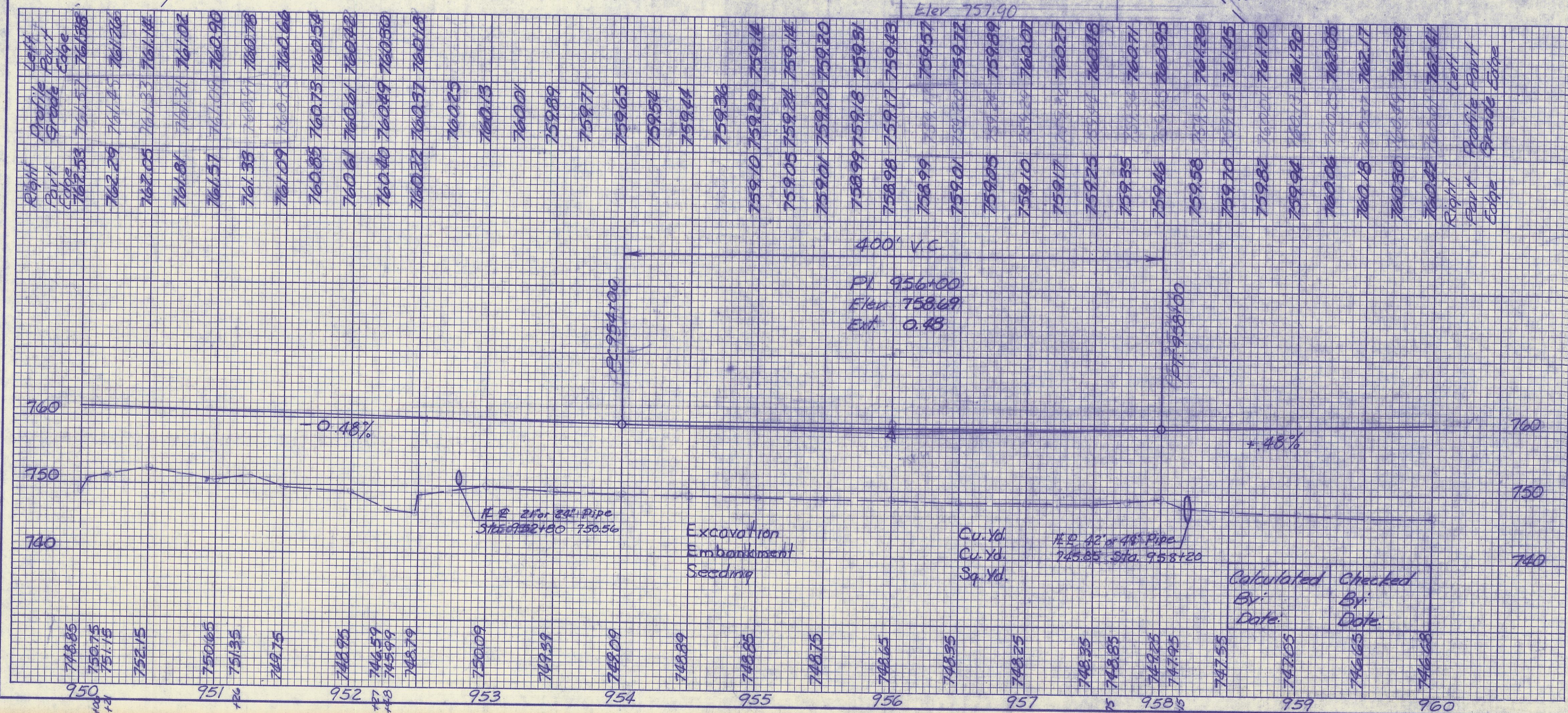
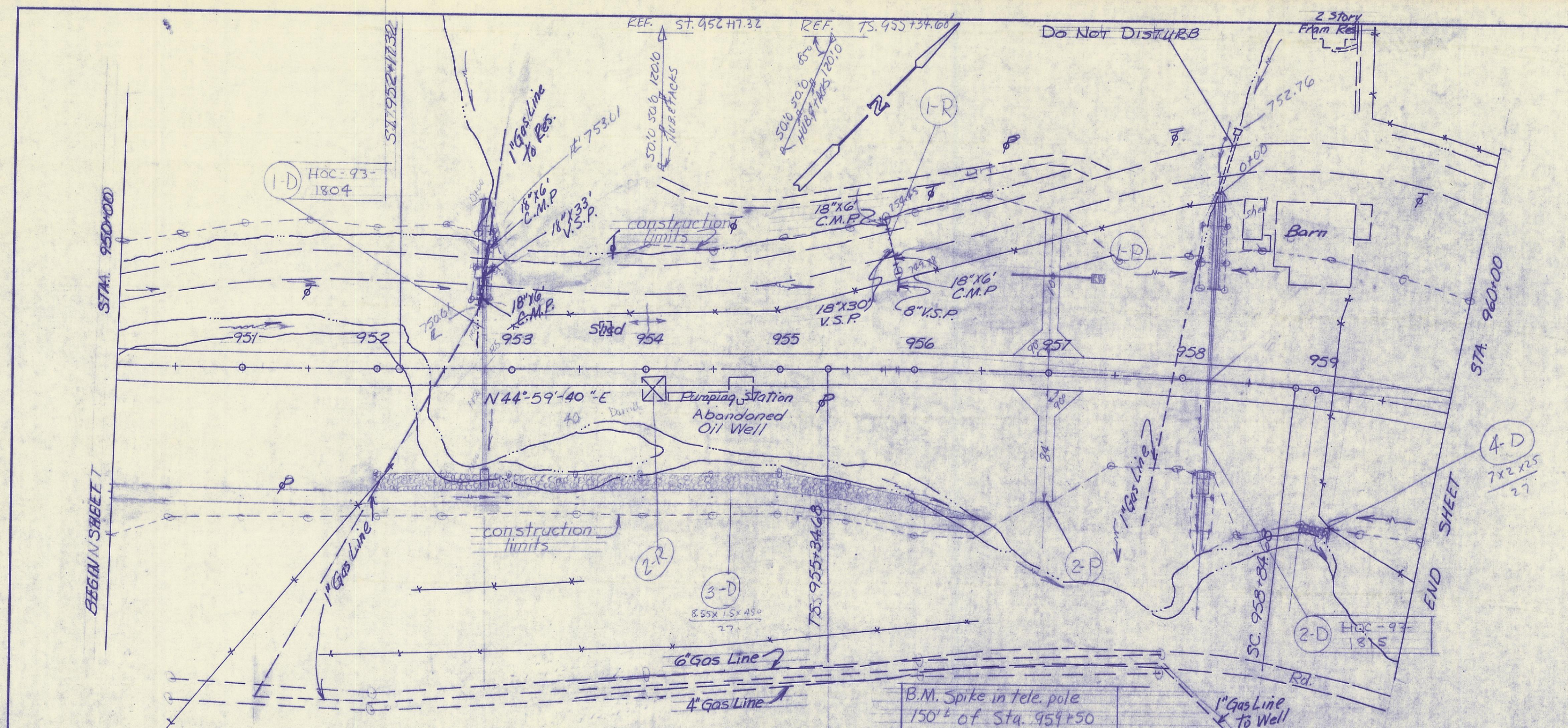


FED. RD. DIVISION	STATE	PROJECT
2	OHIO	

HOC-93-(16.35)(17.63)

(21)



ESTIMATED QUANTITIES

REF. NO.	STATION TO STATION	SIDE	304 Asphalt Concrete Base	304 Asphalt Concrete Base	301 Bit. Aggreg. Base	603 Conduit	603 Conduit	602 Concrete Masonry	601 Pipe	202 Pipe	Special Oil Well	601 Dumped Rock	600 Siding
			Cu. Yd.	Cu. Yd.	Cu. Yd.	Lin. Ft.	Lin. Ft.	Cu. Yd.	Lin. Ft.	Lin. Ft.	Each	Cu. Yd.	Sq. Yd.
R-R	955+78 to 955+90	Lf.											
R-R	954+05	Rt.											
DRAINAGE	952+80 (Culvert)	REL											
DRAINAGE	958+20 (Culvert)	REL											
DRAINAGE	952+00 to 956+50	REL											
DRAINAGE	954+00 to 954+25	RT.											
PAVEMENT	957+00 (Res. Drive)	Lf.	1.4	25.5									
PAVEMENT	957+00 (Field Drive)	Rt.		22.5									
TOTALS			60	126	136							214	227