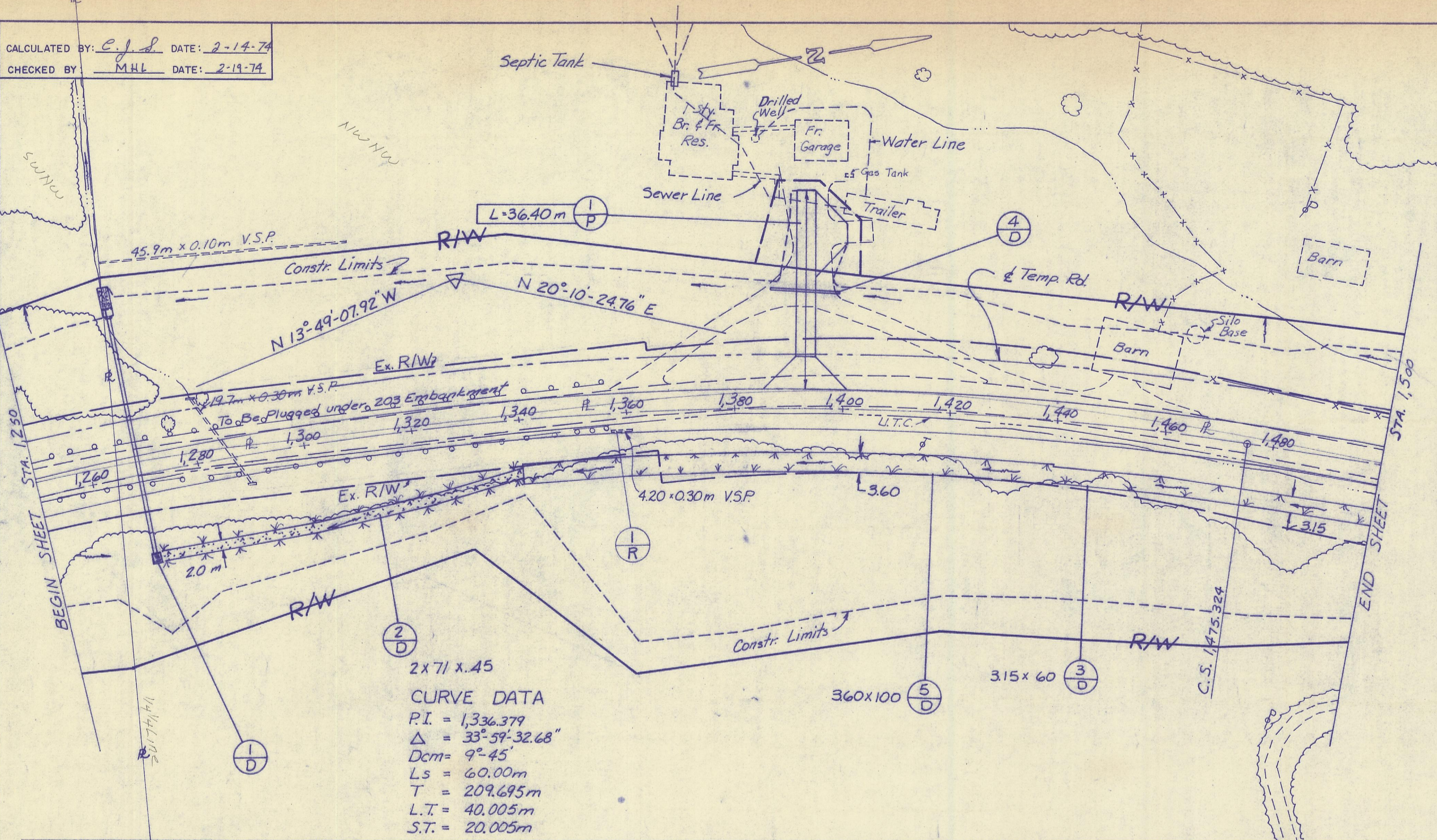


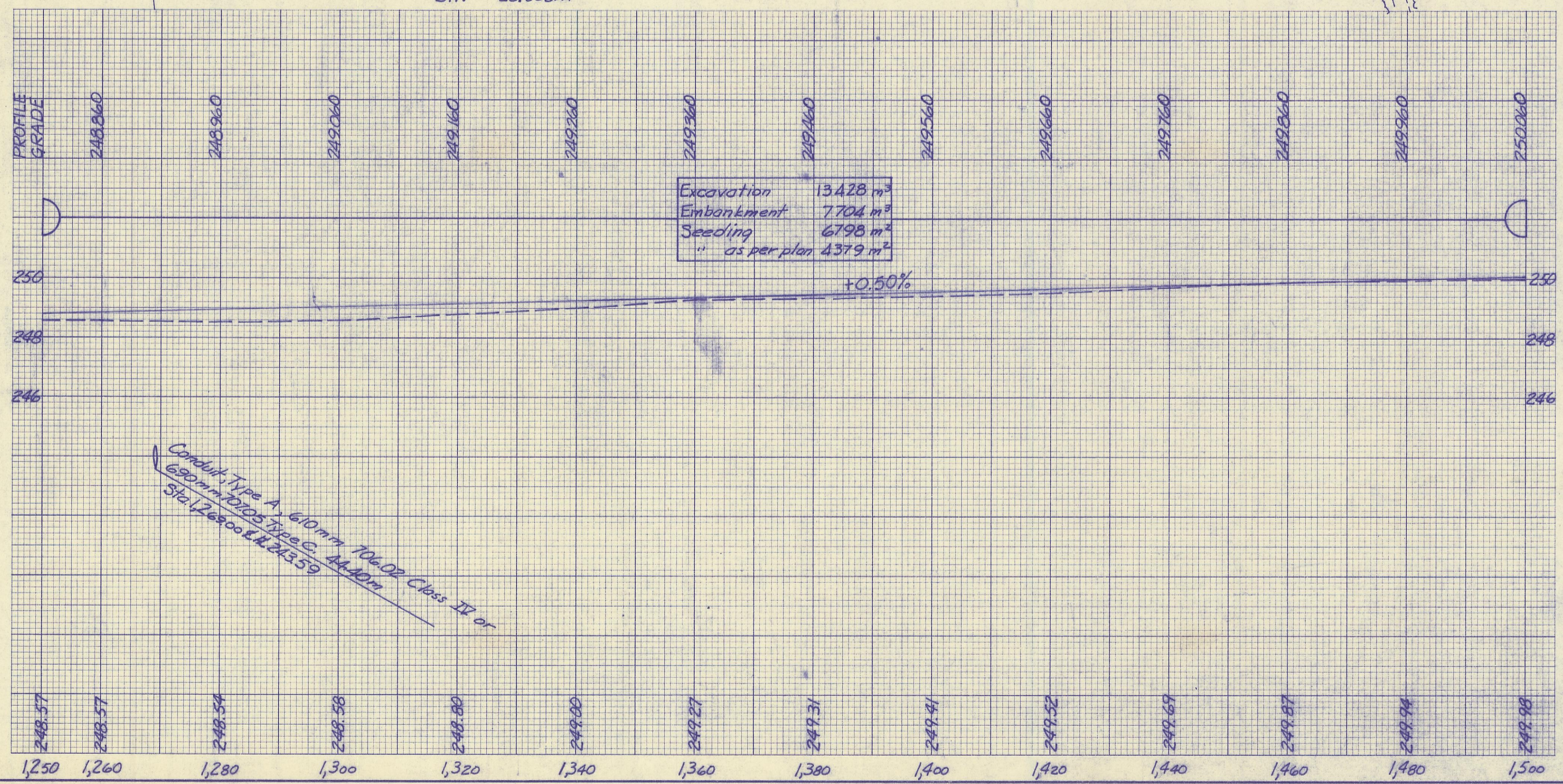
CALCULATED BY: E.J.S. DATE: 2-14-74
 CHECKED BY: M.H.L. DATE: 2-19-74

STATE: HOC-93-0,220 29
 OHIO



2x71 x.45
 CURVE DATA
 P.I. = 1,336.379
 $\Delta = 33^\circ-59'-32.68''$
 Dcm = $9^\circ-45'$
 Ls = 60.00m
 T = 209.695m
 L.T. = 40.005m
 S.T. = 20.005m

Excavation 13,428 m³
 Embankment 7,704 m³
 Seeding 6,798 m²
 " as per plan 4,379 m²



REF. NO.	STATION TO STATION	SIDE	See Sheet No.	ESTIMATED QUANTITIES	TOTALS
FR	1,357 To 1,361.2	RT			
	ROADWAY				
	DRAINAGE				
1-D	1,269	Lt	56		
2-D	1,269 to 1,340	RT		4440	
3-D	1,440 to 1,500	Lt			13.00
4-D	1,361.2 to 1,399.4	Lt	53		
5-D	1,340 to 1,440	RT			
FR	1,383	Res. Dr.	53		
	PAVEMENT				
	TOTALS				

PLAN & PROFILE FROM STA. 1,250 TO STA. 1,500