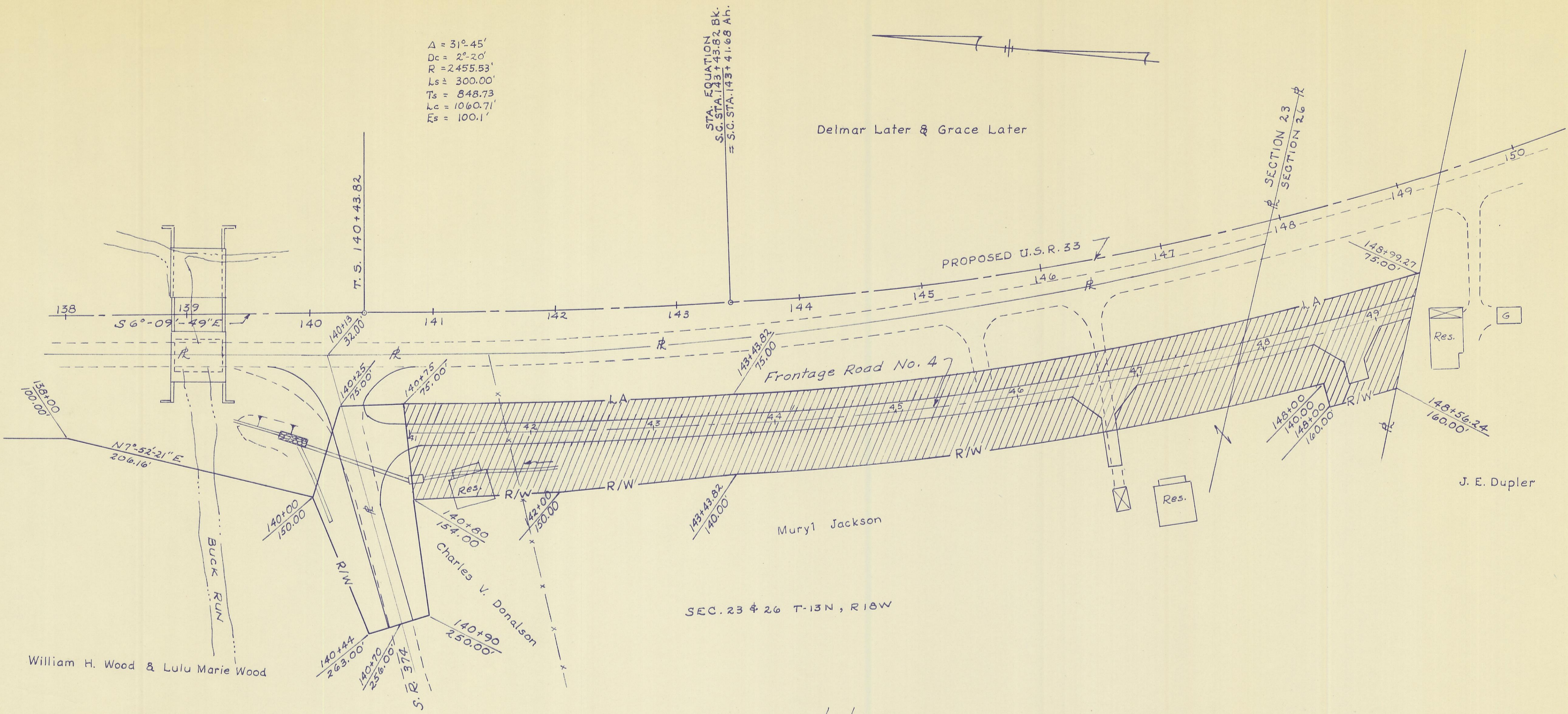


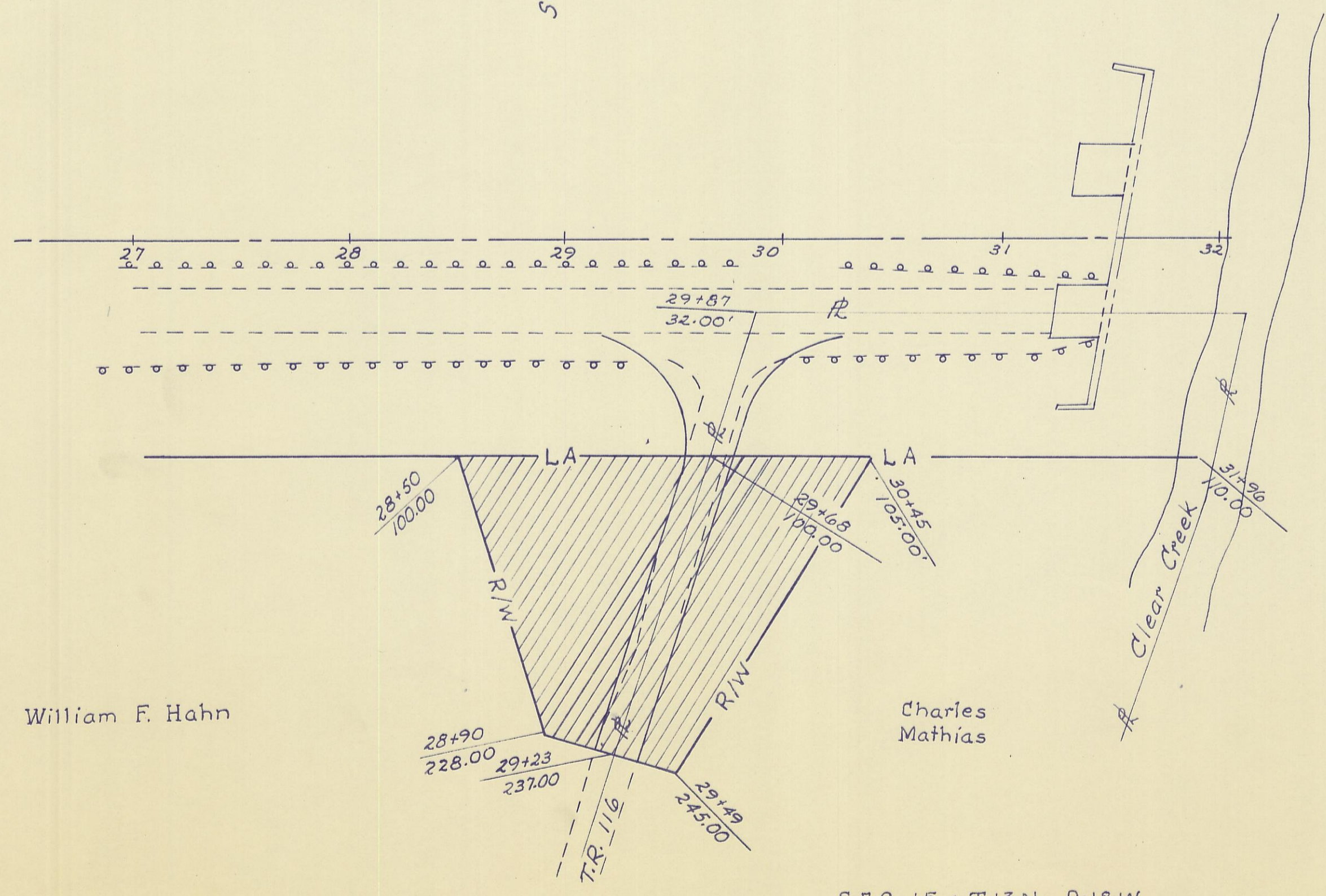
$\Delta = 31^{\circ}45'$
 $Dc = 2^{\circ}20'$
 $R = 2455.53'$
 $Ls = 300.00'$
 $Ts = 848.73'$
 $Lc = 1060.71'$
 $Es = 100.1'$

STA. EQUATION
 S.C. STA. 143 + 43.82 BK.
 = S.C. STA. 143 + 41.68 A.H.

Delmar Later & Grace Later



SEC. 23 & 26 T-13N, R-18W



SEC-15 - T-13-N, R-18-W

AREA TRANSFERRED TO COUNTY

OFFICE OF THE COUNTY COMMISSIONERS
 OF HOCKING COUNTY
 THIS PLAT APPROVED & ACCEPTED BY US
 THIS 30 DAY OF October, 1964
 FOR MAINTENANCE AND PUBLIC USE.
William A. Shaw BOARD OF
W. A. Shaw HOCKING COUNTY
 COMMISSIONERS

I FIND THAT THE SECTIONS OF ROAD TRANSFERRED
 HEREBY HAVE BEEN CONSTRUCTED IN A
 SATISFACTORY MANNER AND ARE IN GOOD
 REPAIR.
 DATE December 5, 1966 *Ed Underwood*
 HOCKING COUNTY ENGINEER

DEDICATION PLAT
 HOCKING COUNTY S.R. 33 SEC. HOC-33 (0.09-0.24)
 GOODHOPE TWP. SEC. 15, 23 & 26
 T-13N, R-18W