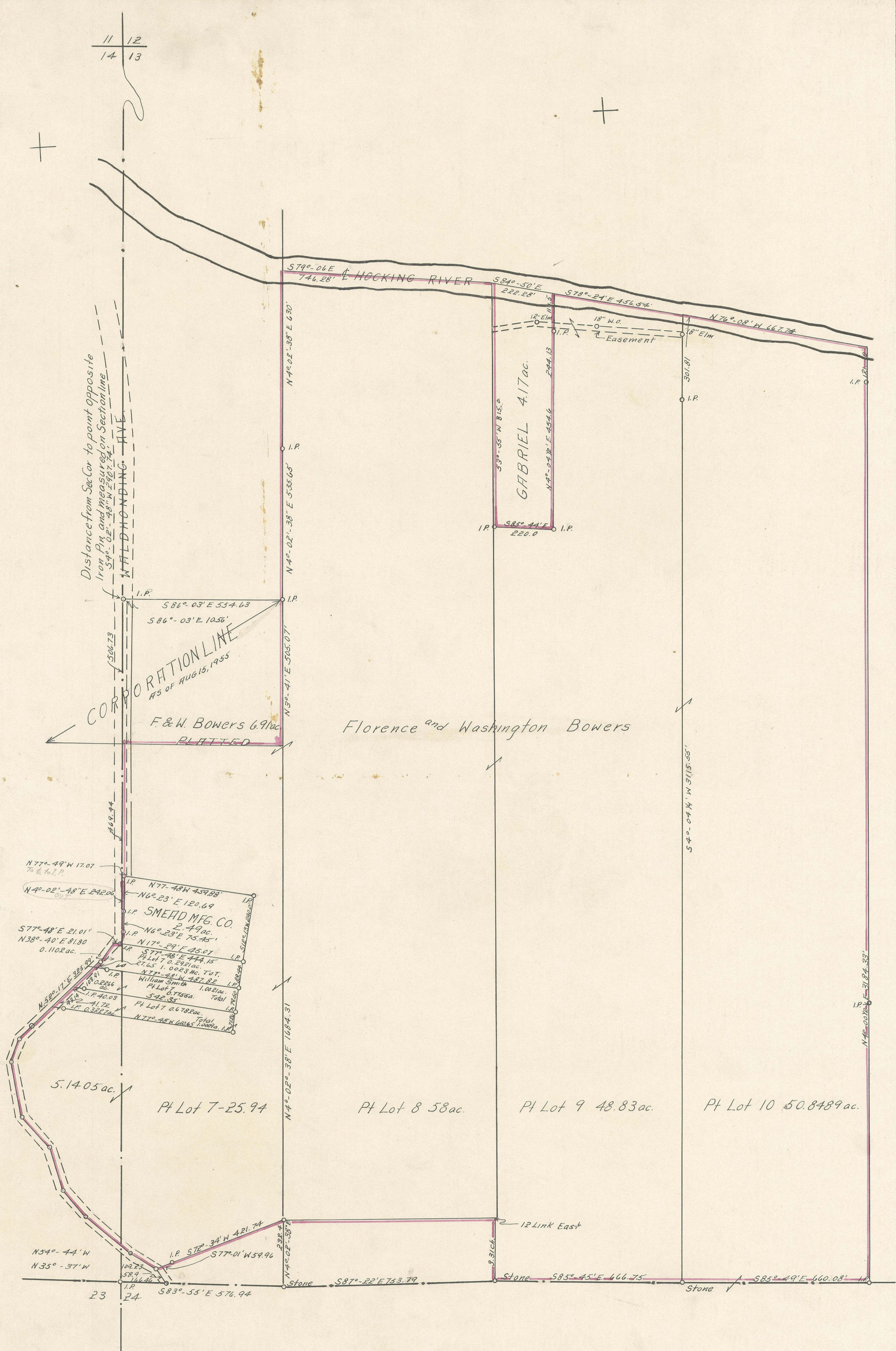


11 12  
14 13



Distance from Sec. Cor to point opposite  
Iron Pin and measured on Section line  
54° 02' 48" W 297.74'

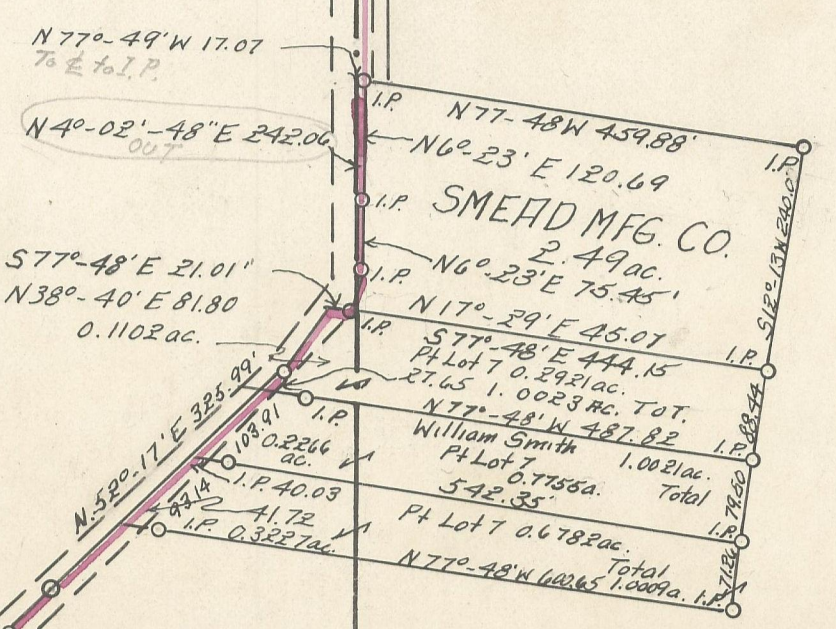
WILDHONDING AVE.

CORPORATION LINE  
AS OF AUG 15, 1955

F. & W. BOWERS 6.91ac  
PLATTED

Florence and Washington Bowers

GABRIEL 4.17ac.



PT Lot 7-25.94

PT Lot 8 58ac.

PT Lot 9 48.83ac.

PT Lot 10 50.8489ac.

- N 43°-34' E 66.21
- N 24°-35' E 85.00
- N 9°-18' W 194.97
- N 35°-19' W 144.79
- N 12°-59' W 150.42
- N 34°-50' W 122.75
- N 46°-33' W 209.51

12 Link East  
Stone S 87°-22' E 73.79  
Stone S 85°-45' E 66.75  
Stone S 85°-49' E 60.08'