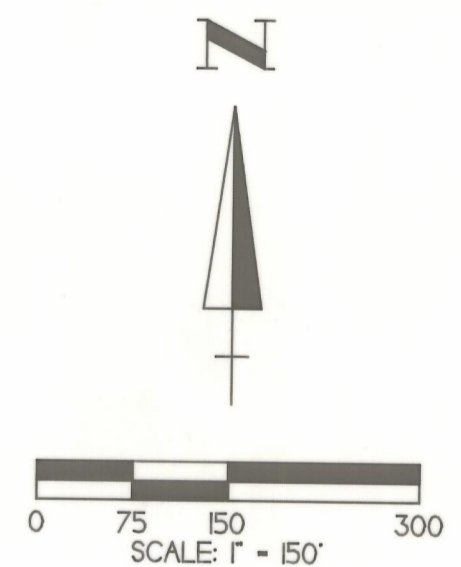


NOTE: SEE GENERAL NOTES & RESTRICTIONS ON SHEET 1 OF 2 FOR THE COVENANTS WHICH AFFECT THE LOTS DEPICTED HEREON.

BASIS OF BEARING
 BEARINGS DERIVED FROM PREVIOUS SURVEYS AND ARE FOR DETERMINATION OF ANGLES ONLY AND ARE BASED ON THE NORTH LINE OF THE NORTHEAST QUARTER OF THE NORTHWEST QUARTER OF SECTION 31 AS BEARING: S 85° 29' E

- LEGEND**
- △ 5/8" IRON PIN SET WITH PLASTIC I.D. CAP INSCRIBED "SEYMOUR & ASSOC."
 - IRON PIPE FOUND
 - ⊙ IRON PIN FOUND
 - STONE FOUND
 - ⊕ "PK" NAIL SET
 - ⊖ FENCE POST FOUND
 - 6" DIAMETER CONCRETE MONUMENT WITH 5/8" IRON PIN SET
 - POINT

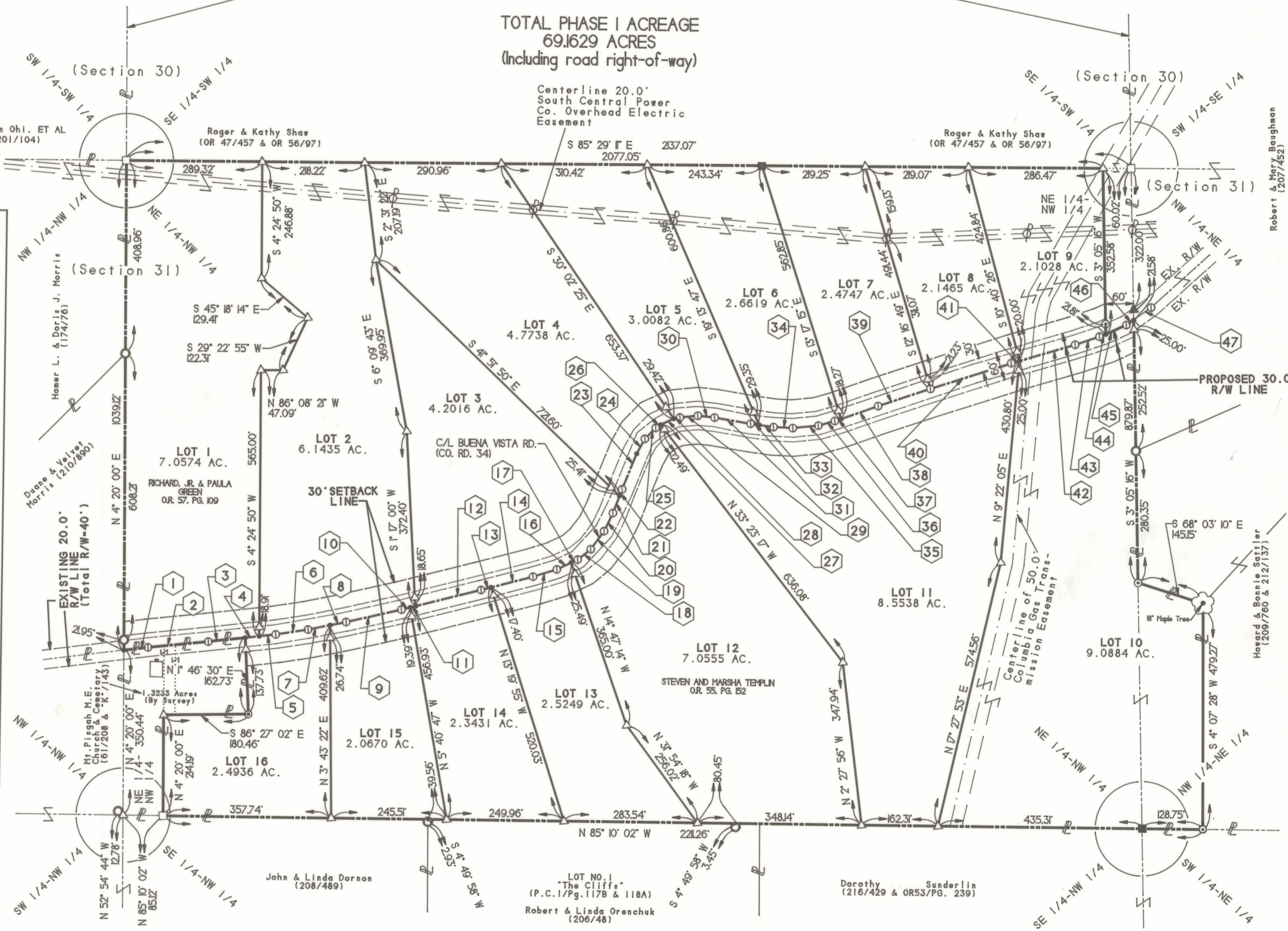


FUTURE PHASE II DEVELOPEMENT AREA

TOTAL PHASE I ACREAGE
 69.1629 ACRES
 (Including road right-of-way)

BEARINGS AND DISTANCES ALONG THE CENTERLINE OF BUENA VISTA ROAD (Co. Rd. No. 34)

1)	N 87° 15' 31"	51.64'
2)	N 88° 34' 13"	129.00'
3)	N 88° 00' 07"	79.19'
4)	N 88° 00' 07"	29.79'
5)	N 88° 00' 07"	35.14'
6)	N 85° 33' 12"	69.60'
7)	N 82° 55' 21"	47.82'
8)	N 82° 55' 21"	34.81'
9)	N 81° 33' 54"	120.74'
10)	N 80° 12' 49"	19.12'
11)	N 80° 12' 49"	10.90'
12)	N 80° 12' 49"	144.32'
13)	N 79° 42' 37"	21.76'
14)	N 79° 42' 37"	92.38'
15)	N 77° 12' 15"	53.06'
16)	N 68° 53' 24"	33.60'
17)	N 68° 53' 24"	15.43'
18)	N 55° 40' 44"	35.32'
19)	N 40° 40' 16"	47.71'
20)	N 30° 04' 55"	42.66'
21)	N 25° 04' 00"	39.06'
22)	N 25° 04' 00"	8.75'
23)	N 26° 19' 04"	88.29'
24)	N 32° 49' 14"	36.10'
25)	N 48° 05' 24"	37.43'
26)	N 69° 33' 32"	8.01'
27)	N 69° 33' 32"	30.61'
28)	N 69° 33' 32"	4.43'
29)	N 88° 33' 26"	47.47'
30)	S 79° 39' 13"	35.86'
31)	S 76° 13' 05"	77.58'
32)	S 77° 33' 43"	18.47'
33)	S 77° 33' 43"	30.54'
34)	S 83° 04' 55"	41.03'
35)	N 88° 31' 45"	54.41'
36)	N 78° 20' 19"	44.05'
37)	N 74° 45' 47"	6.18'
38)	N 74° 45' 47"	83.38'
39)	N 75° 54' 55"	116.79'
40)	N 76° 39' 31"	189.48'
41)	N 78° 02' 34"	8.37'
42)	N 78° 02' 34"	123.81'
43)	N 75° 54' 09"	64.88'
44)	N 69° 45' 33"	4.11'
45)	N 69° 45' 33"	47.90'
46)	N 60° 48' 40"	18.94'
47)	N 58° 24' 21"	45.48'



NOTE: SEE GENERAL NOTES & RESTRICTIONS ON SHEET 1 OF 2 FOR THE COVENANTS WHICH AFFECT THE LOTS DEPICTED HEREON.

NOTE: SEE GENERAL NOTES & RESTRICTIONS ON SHEET 1 OF 2 FOR THE COVENANTS WHICH AFFECT THE LOTS DEPICTED HEREON.

OWNERS/DEVELOPERS: ROGER & KATHY SHAW (OR47/PG.457 & OR56/PG.97)

Sheet	Revisions:		
2/2			
Job	drawn	date	
H31951 (BVPLAT22)	G JLC	06/15/95	

RECORD PLAT

"BUENA VISTA VIEW SUBDIVISION"

(PHASE - I)

BEING PART OF THE NE. 1/4 OF THE NW. 1/4 AND PART OF THE NW. 1/4 OF THE NE. 1/4 OF SECTION 31 AND BEING SITUATED IN TOWN-13-NORTH, RANGE-18-WEST, GOOD HOPE TOWNSHIP, HOCKING COUNTY, STATE OF OHIO.

PROFESSIONAL LAND SURVEYORS

- OIL WELL PERMITTING
- LOTS & FARM SURVEYS
- SUB-DIVISIONS
- LAND PLANNING
- CONSTRUCTION

SEYMOUR & ASSOCIATES

69 S. MARKET ST. P.O. Box 624
Logan, Ohio 43138
385-5954



NOTE: SEE GENERAL NOTES & RESTRICTIONS ON SHEET 1 OF 2 FOR THE COVENANTS WHICH AFFECT THE LOTS DEPICTED HEREON.