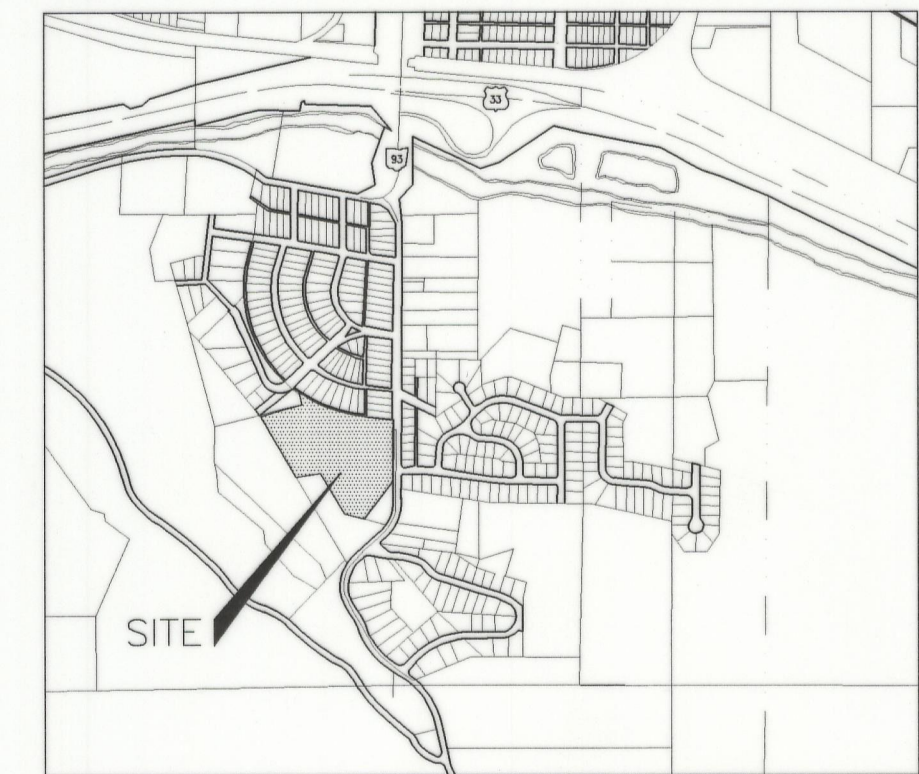


CARLIN ESTATES CONDOMINIUMS - PHASE I

Situated in the City of Logan, Falls Township, Hocking County, Ohio;
being part of Fractional Lot 1 of Section 14, Township 14, Range 17.

OWNER & DEVELOPER:
Stephen C. &
Kathryn Good
35222 Hocking Drive
Logan, Ohio 43138

SURVEYOR & ENGINEER:
Larry P. Gerstner
9 East Second Street
Logan, Ohio 43138



VICINITY MAP
Scale: 1"=2000'

PHASE I DESCRIPTION:

SURVEY DESCRIPTION OF THE 1.240 ACRE PHASE I
BOUNDARY FOR CARLIN ESTATES CONDOMINIUMS

Situated in the City of Logan, Falls Township, Hocking County, Ohio; being part of Fractional Lot 1 of Section 14, Township 14, Range 17; and being more particularly described as follows:

Commencing for reference at a 5/8" iron pin found on the Logan City Corporation line at the Southeast corner of Lot 117 (now Lot number 1518) of the South Logan Subdivision as recorded in Plat Book B, Page 36, Hocking County Recorder's Office; thence leaving said Lot 117 and with the West right of way of Walhonding Avenue and the Logan City Corporation line South 3 degrees 13 minutes 19 seconds West a distance of 316.50 feet to a 5/8" iron pin previously set and being the point of Beginning of the tract of land to be described;

thence continuing with the West right of way of Walhonding Avenue and the Logan City Corporation line South 3 degrees 13 minutes 19 seconds West a distance of 39.93 feet to a point;

thence leaving the West right of way of Walhonding Avenue and the Logan City Corporation line North 86 degrees 46 minutes 41 seconds East a distance of 1.01 feet to a point;

thence with a curve to the left having a radius of 23.50 feet and a chord bearing North 72 degrees 08 minutes 38 seconds West at a distance of 11.87 feet to a point;

thence North 86 degrees 46 minutes 41 seconds West a distance of 180.32 feet to a point;

thence with a curve to the left having a radius of 13.50 feet and a chord bearing South 53 degrees 13 minutes 19 seconds West at a distance of 17.36 feet to a point;

thence South 13 degrees 13 minutes 19 seconds West a distance of 7.79 feet to a point;

thence South 76 degrees 46 minutes 41 seconds East a distance of 180.50 feet to a point;

thence South 13 degrees 13 minutes 19 seconds West a distance of 60.00 feet to a point;

thence North 76 degrees 46 minutes 41 seconds East a distance of 18.50 feet to a point;

thence with a curve to the left having a radius of 3.50 feet and a chord bearing South 22 degrees 02 minutes 32 seconds East at a distance of 4.04 feet to a point;

thence with a curve to the right having a radius of 41.50 feet and a chord bearing South 3 degrees 39 minutes 21 seconds West at a distance of 72.57 feet to a point;

thence South 25 degrees 22 minutes 54 seconds East a distance of 33.84 feet to a point;

thence South 52 degrees 45 minutes 07 seconds East a distance of 63.09 feet to a 5/8" iron pin set on the Logan City Corporation line;

thence with the Logan City Corporation line the following three bearings and distances:

- 1) South 37 degrees 43 minutes 25 seconds West a distance of 99.27 feet to a 1" iron pin found;
- 2) North 71 degrees 38 minutes 28 seconds West a distance of 148.84 feet to a 5/8" iron pin set;
- 3) North 29 degrees 27 minutes 50 seconds West a distance of 182.42 feet to a 5/8" iron pin set;

thence leaving the Logan City Corporation line North 50 degrees 18 minutes 54 seconds East a distance of 88.41 feet to a point;

thence South 39 degrees 41 minutes 06 seconds East a distance of 54.00 feet to a point;

thence South 71 degrees 25 minutes 59 seconds East a distance of 71.05 feet to a point;

thence with a curve to the right having a radius of 41.50 feet and a chord bearing North 51 degrees 09 minutes 32 seconds East at a distance of 44.71 feet to a point;

thence with a curve to the left having a radius of 3.50 feet and a chord bearing North 48 degrees 29 minutes 11 seconds East at a distance of 4.04 feet to a point;

thence North 13 degrees 13 minutes 19 seconds East a distance of 58.97 feet to a point;

thence with a curve to the left having a radius of 13.50 feet and a chord bearing North 36 degrees 46 minutes 41 seconds West at a distance of 20.68 feet to a point;

thence North 3 degrees 13 minutes 19 seconds East a distance of 36.93 feet to a point;

thence South 86 degrees 46 minutes 41 seconds East a distance of 243.59 feet to the point of beginning, containing 1.240 acres more or less, and subject to any public or private easements of record.

The above 1.240 acre survey is intended to describe part of the 8.382 acre Carlin Estates Condominiums as deeded to Stephen C. and Kathryn Good, deed reference Volume OR165, Page 767, and deed reference Volume OR170, Page 873, both of the Hocking County Recorder's Office. This survey was based upon information obtained from tax maps, deed descriptions, previous surveys, an existing subdivision, and existing monumentation. The reference bearing for this survey is the South line of Lot 117 of the South Logan Subdivision as South 80 degrees 36 minutes 33 seconds East. Bearings are based upon an assumed meridian and are to denote angles only. All iron pins set by this survey or previously set are 5/8" by 30" and are capped by a 1-1/4" plastic identification cap stamped LPG-6344. The above described property was surveyed by Larry P. Gerstner, Ohio Registered Surveyor No. 6344, on September 24, 2001.

OVERALL DESCRIPTION:

SURVEY DESCRIPTION OF A 8.382 ACRE TRACT FOR CARLIN ESTATES CONDOMINIUMS

Situated in the City of Logan, Falls Township, Hocking County, Ohio; being part of Fractional Lot 1 of Section 14, Township 14, Range 17; and being more particularly described as follows:

Beginning at a 5/8" iron pin found on the Logan City Corporation line at the Southeast corner of Lot 117 (now Lot number 1518) of the South Logan Subdivision as recorded in Plat Book B, Page 36, Hocking County Recorder's Office; thence leaving said Lot 117 and with the West right of way of Walhonding Avenue and the Logan City Corporation line South 3 degrees 13 minutes 19 seconds West a distance of 342.00 feet to a 5/8" iron pin set;

thence South 3 degrees 13 minutes 19 seconds West a distance of 246.00 feet to a 5/8" iron pin set;

thence South 86 degrees 46 minutes 41 seconds East a distance of 342.00 feet to a 5/8" iron pin set on the West right of way of Walhonding Avenue and the Logan City Corporation line;

thence with the West right of way of Walhonding Avenue and the Logan City Corporation line the following eight bearings and distances:

- 1) South 37 degrees 43 minutes 25 seconds West a distance of 360.94 feet to a 1" iron pin found;
- 2) North 71 degrees 38 minutes 28 seconds West a distance of 148.84 feet to a 5/8" iron pin set;
- 3) North 29 degrees 27 minutes 50 seconds West a distance of 347.12 feet to a 1" iron pin found;
- 4) North 82 degrees 14 minutes 10 seconds West a distance of 172.44 feet to a 5/8" iron pin previously set;
- 5) North 28 degrees 46 minutes 28 seconds West a distance of 420.00 feet to a 5/8" iron pin found;
- 6) North 76 degrees 18 minutes 00 seconds East a distance of 239.76 feet to a 1" iron bolt found;
- 7) North 76 degrees 39 minutes 11 seconds East a distance of 39.67 feet to a 1-1/4" OD iron pipe found;
- 8) North 12 degrees 39 minutes 41 seconds West a distance of 154.39 feet to a 1-1/4" OD iron pipe found on the South line of a platted alley;

thence leaving the Logan City Corporation line and with the South line of a platted alley on a curve to the left having a radius of 1081.00 feet and a chord bearing South 62 degrees 03 minutes 53 seconds East at a distance of 570.40 feet to a 1-1/4" OD iron pipe found, and passing a 1-1/4" OD iron pipe found at a bearing of South 51 degrees 55 minutes 08 seconds East and a distance of 199.54 feet;

thence leaving the South line of said platted alley and with the West line of another platted alley South 2 degrees 41 minutes 34 seconds West a distance of 17.97 feet to a 1-1/4" OD iron pipe found;

thence with the South line of the same platted alley South 80 degrees 43 minutes 44 seconds East a distance of 14.90 feet to a 1-1/2" axle found at the Southwest corner of said Lot 117;

thence leaving said alley and with the South line of said Lot 117 South 80 degrees 36 minutes 33 seconds East a distance of 172.73 feet to the point of beginning, containing 8.382 acres more or less, and subject to any public or private easements of record.

The above 8.382 acre survey is intended to describe part of the 8.31 acre tract as deeded to Stephen and Kathryn Good, deed reference Volume OR165, Page 767, and all of the 2.171 acre tract as deeded to Stephen and Kathryn Good, deed reference Volume OR170, Page 873, both of the Hocking County Recorder's Office. This survey was based upon information obtained from tax maps, deed descriptions, previous surveys, an existing subdivision, and existing monumentation. The reference bearing for this survey is the South line of Lot 117 of the South Logan Subdivision as South 80 degrees 36 minutes 33 seconds East. Bearings are based upon an assumed meridian and are to denote angles only. All iron pins set by this survey or previously set are 5/8" by 30" and are capped by a 1-1/4" plastic identification cap stamped LPG-6344. The above described property was surveyed by Larry P. Gerstner, Ohio Registered Surveyor No. 6344, on March 30, 2001.

NOTES:

- 1) Phase I Driveways are not yet completed.
- 2) Phase I Sidewalks are not yet completed.

Southeast corner of Lot 117 (now Lot 1518) of the South Logan Subdivision as recorded in Plat Book B, Page 30
Point of Beginning of overall description

Cynthia Bartow & Connie Wolfe
OR12-976 & OR187-367
Lot 117
now Lot 1518

Southwest corner of Lot 117

Good Builders, Inc.
OR211-91
8.382 acres

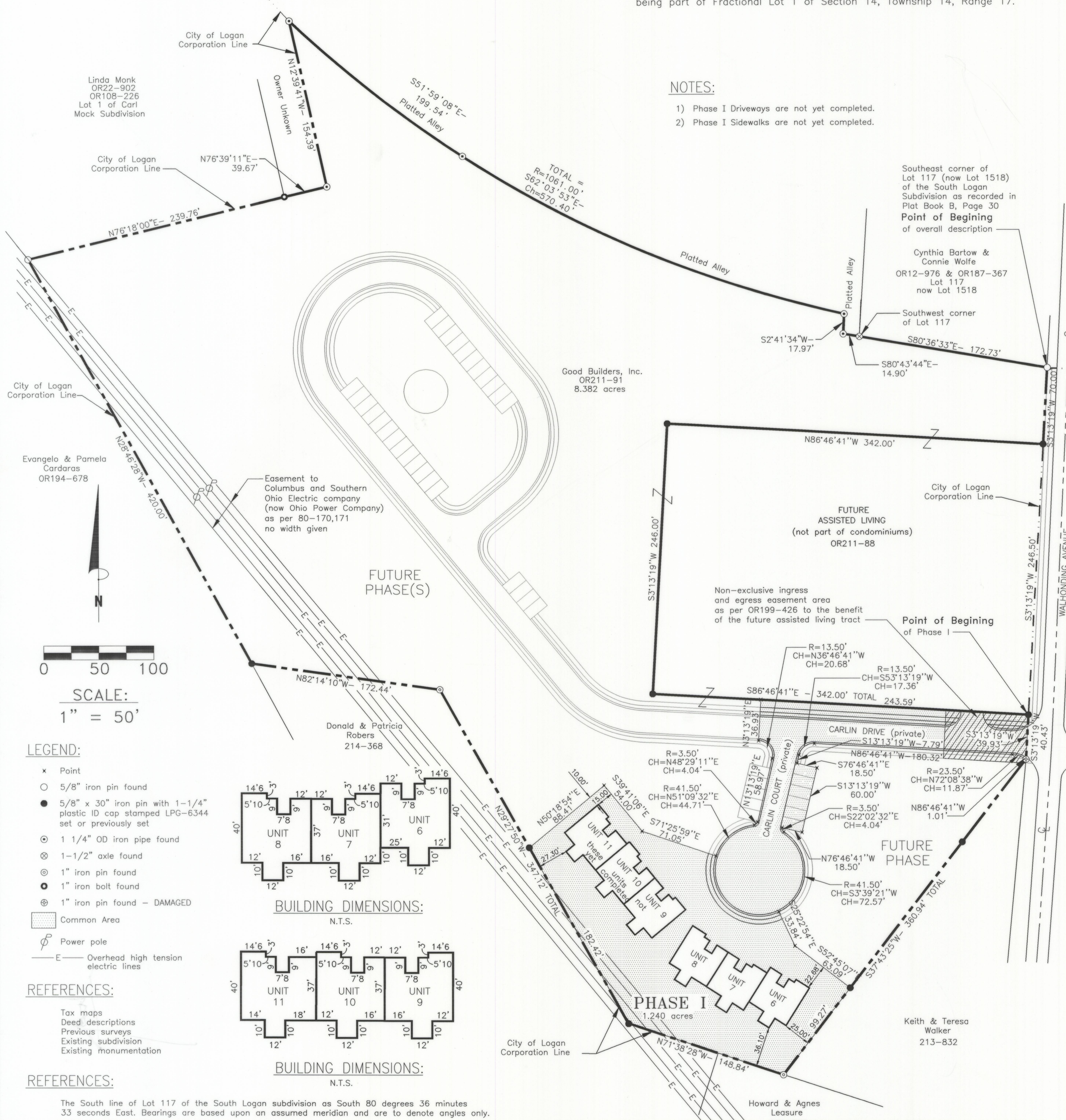
City of Logan Corporation Line

Point of Beginning of Phase I

FUTURE PHASE

Keith & Teresa Walker
213-832

Howard & Agnes Leasure
200-505



Linda Monk
OR22-902
OR108-226
Lot 1 of Carl Mock Subdivision

City of Logan Corporation Line

City of Logan Corporation Line

Evangelo & Pamela Cardaras
OR194-678

Easement to Columbus and Southern Ohio Electric Company (now Ohio Power Company) as per 80-170,171 no width given

City of Logan Corporation Line

City of Logan Corporation Line

City of Logan Corporation Line

Donald & Patricia Robers
214-368

City of Logan Corporation Line

City of Logan Corporation Line

City of Logan Corporation Line

City of Logan Corporation Line

City of Logan Corporation Line

City of Logan Corporation Line

City of Logan Corporation Line



SCALE:
1" = 50'

LEGEND:

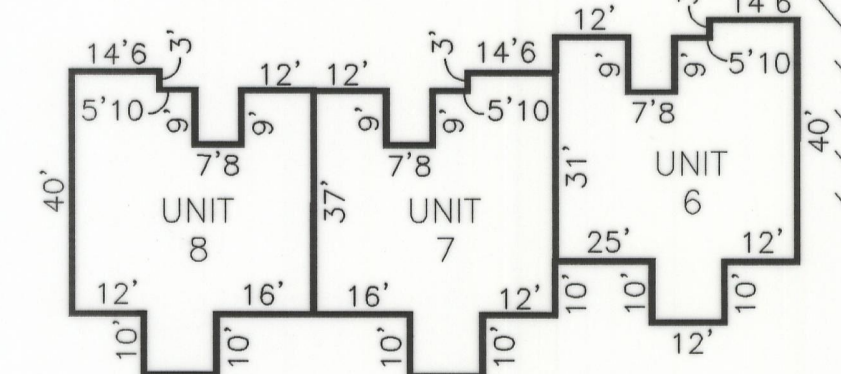
- x Point
- 5/8" iron pin found
- 5/8" x 30" iron pin with 1-1/4" plastic ID cap stamped LPG-6344 set or previously set
- 1 1/4" OD iron pipe found
- ⊗ 1-1/2" axle found
- ⊙ 1" iron pin found
- ⊙ 1" iron bolt found
- ⊙ 1" iron pin found - DAMAGED
- Common Area
- Power pole
- E Overhead high tension electric lines

REFERENCES:

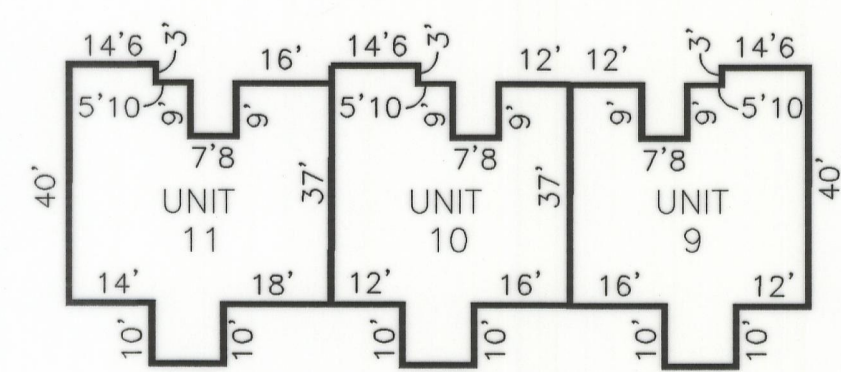
- Tax maps
- Deed descriptions
- Previous surveys
- Existing subdivision
- Existing monumentation

REFERENCES:

The South line of Lot 117 of the South Logan subdivision as South 80 degrees 36 minutes 33 seconds East. Bearings are based upon an assumed meridian and are to denote angles only.



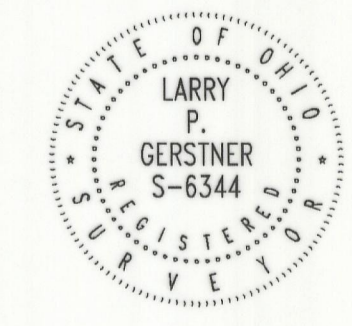
BUILDING DIMENSIONS:
N.T.S.



BUILDING DIMENSIONS:
N.T.S.

SURVEYOR'S STATEMENT:

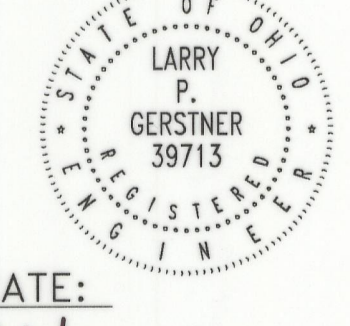
I hereby certify that this drawing depicts an actual survey of the Carlin Estates Condominiums including this Phase I and that there are no encroachments onto any abutting premises.



Larry P. Gerstner, P.E., P.S.
Registered Surveyor No. 6344

ENGINEER'S STATEMENT:

I hereby certify that this drawing accurately shows the buildings located in Carlin Estates Condominiums, Phase I.



Larry P. Gerstner, P.E., P.S.
Registered Surveyor No. 39713

AUDITOR'S CERTIFICATE:

Transferred on tax duplicate this 12th day of October, 2001

Kenneth R. Wilson
Kenneth Wilson, Hocking County Auditor

RECORDER'S CERTIFICATE:

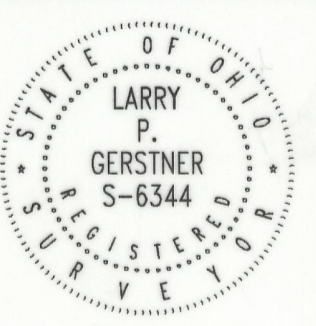
Filed for record this 12 day of October, 2001 at 2:26 P.M.
Recorded this 12 day of October, 2001 in Plat Cabinet 2, at Page 78

Donna R. Beach
Donna Leach, Hocking County Recorder

CARLIN ESTATES CONDOMINIUMS - PHASE I

959 WALHONDING AVENUE
LOGAN, OHIO 43138

PLAN



Larry P. Gerstner
Ohio P.E. #39713
Ohio P.S. #6344

REVISIONS

10/11/01

SCALE: 1"=50'

SHEET



LARRY P. GERSTNER
ENGINEERING & SURVEYING
9 East Second Street, Suite A, Logan, Ohio 43138
(740) 385-4260