

NOTE: SEE GENERAL NOTES & RESTRICTIONS ON SHEET 1 OF 2 FOR THE COVENANTS WHICH EFFECT THE LOTS DEPICTED HEREON.

194B

REFERENCES:
 DEEDS AS NOTED
 COUNTY TAX MAPS
 PREVIOUS SURVEYS
 EXISTING MONUMENTS

LOT & R/W CURVE DATA:

LOT NO. - CURVE NO.	RADIUS	DELTA	ARC	CHORD	SEG. AREA
LOT 44-A	30.00'	48 11'24"	25.23'	S 58 19'51" W - 24.50'	+43.07SF
LOT 44-B	60.00'	100 45'47"	105.52'	S 84 37'05" W - 92.44'	-1397.23SF
LOT 49-A	60.00'	90 00'01"	94.25'	N 00 00'00" E - 84.85'	-1027.44SF
LOT 50-A	30.00'	48 11'24"	25.23'	S 73 28'51" E - 24.50'	+43.07SF
LOT 50-B	60.00'	85 36'56"	89.66'	N 87 48'31" E - 81.55'	-894.96SF

DEERFIELD DRIVE PAVEMENT CENTERLINE CURVE DATA:

CURVE NO.	RADIUS	DELTA	ARC	CHORD
#1	1432.39'	03°41'31"	92.30'	S 80°52'36" W - 92.28'
#2	1145.92'	12°45'37"	255.21'	S 89°06'10" W - 254.68'
#3	954.93'	10°37'00"	176.94'	N 89°49'32" W - 176.69'
#4	1145.92'	05°16'28"	105.49'	S 87°30'12" W - 105.45'
#5	572.96'	07°42'51"	77.14'	S 86°17'01" W - 77.08'
#6	60.00'	276°22'46"	289.42'	N 07°34'25" W - 80.00'

AREA TABLE:

LOT NO.	ACREAGE	LOT NO.	ACREAGE
36	2.5852 AC.	49	4.0029 AC.
37	1.8808 AC.	50	6.0035 AC.
38	1.8366 AC.	51	3.1807 AC.
39	1.8367 AC.	52	3.1817 AC.
40	1.8366 AC.	53	3.1342 AC.
41	1.8366 AC.	54	3.1186 AC.
42	1.8366 AC.	55	3.1969 AC.
43	1.8366 AC.	56	2.1634 AC.
44	1.8422 AC.	57	1.8366 AC.
45	1.8366 AC.	58	12.6289 AC.
46	1.8369 AC.	59	30.0000 AC.
47	3.3356 AC.		

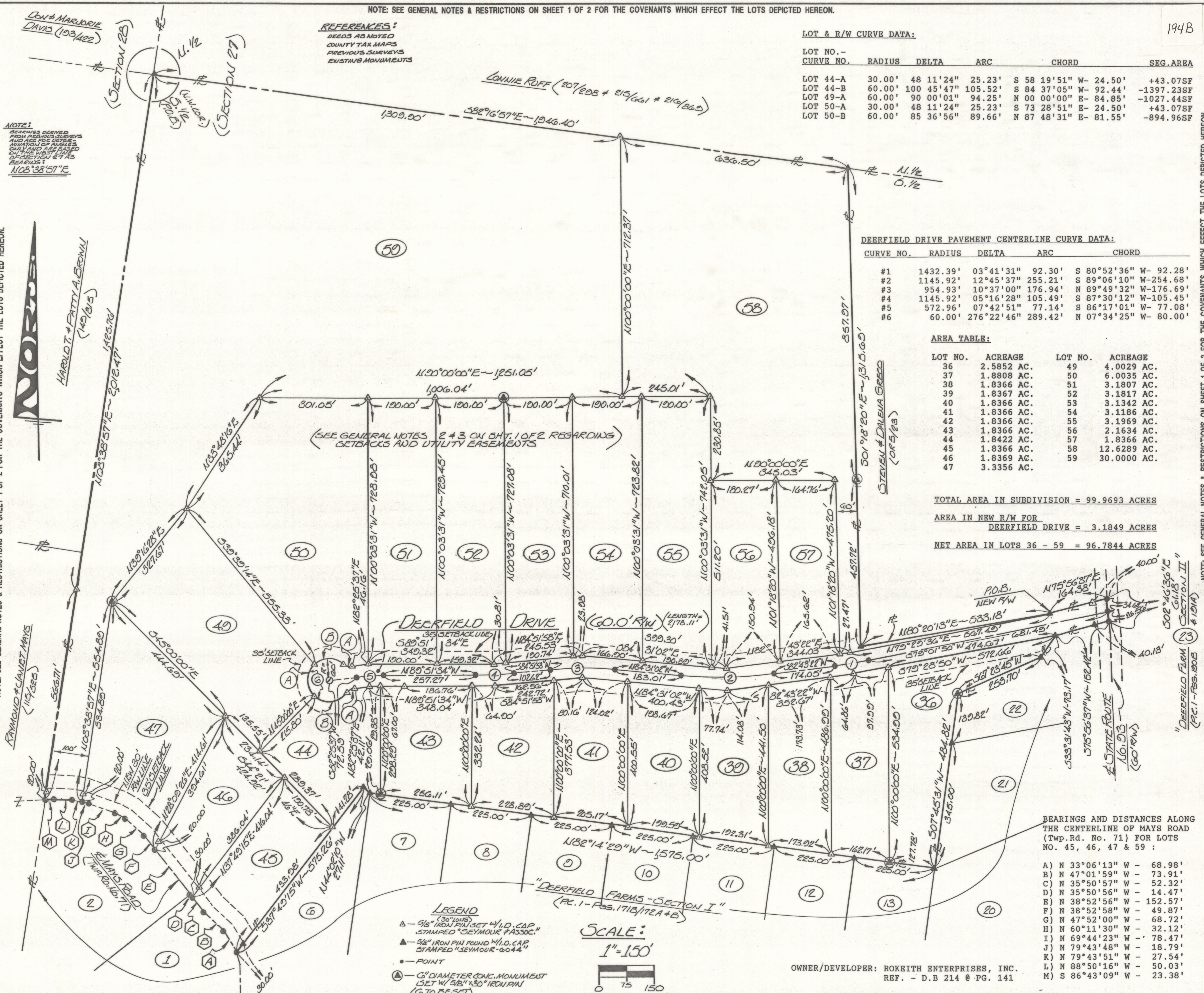
TOTAL AREA IN SUBDIVISION = 99.9693 ACRES

AREA IN NEW R/W FOR DEERFIELD DRIVE = 3.1849 ACRES

NET AREA IN LOTS 36 - 59 = 96.7844 ACRES

NOTE: SEE GENERAL NOTES & RESTRICTIONS ON SHEET 1 OF 2 FOR THE COVENANTS WHICH EFFECT THE LOTS DEPICTED HEREON.

NOTE: SEE GENERAL NOTES & RESTRICTIONS ON SHEET 1 OF 2 FOR THE COVENANTS WHICH EFFECT THE LOTS DEPICTED HEREON.



BEARINGS AND DISTANCES ALONG THE CENTERLINE OF MAYS ROAD (Twp. Rd. No. 71) FOR LOTS NO. 45, 46, 47 & 59:

- A) N 33°06'13" W - 68.98'
- B) N 47°01'59" W - 73.91'
- C) N 35°50'57" W - 52.32'
- D) N 35°50'56" W - 14.47'
- E) N 38°52'56" W - 152.57'
- F) N 38°52'58" W - 49.87'
- G) N 47°52'00" W - 68.72'
- H) N 60°11'30" W - 32.12'
- I) N 69°44'23" W - 78.47'
- J) N 79°43'48" W - 18.79'
- K) N 79°43'51" W - 27.54'
- L) N 88°50'16" W - 50.03'
- M) S 86°43'09" W - 23.38'

OWNER/DEVELOPER: ROKEITH ENTERPRISES, INC.
 REF. - D.B 214 @ PG. 141

NOTE: SEE GENERAL NOTES & RESTRICTIONS ON SHEET 1 OF 2 FOR THE COVENANTS WHICH EFFECT THE LOTS DEPICTED HEREON.

sheet 2/2	DEVELOPER: ROKEITH ENTERPRISES, INC.	<h1>RECORD PLAT</h1> <h2>"DEERFIELD FARMS - Section III"</h2>	PROFESSIONAL LAND SURVEYORS • OIL WELL PERMITTING • LOTS & FARM SURVEYS • SUB-DIVISIONS • LAND PLANNING • CONSTRUCTION SEYMOUR & ASSOCIATES P.O. Box 624 Logan, Ohio 43138 69 S. MARKET ST. 385-5954
job F27041	drawn 	date 2/15/05	STATE OF OHIO GEORGE F. SEYMOUR S-6044 REGISTERED SURVEYOR
SITUATE IN THE SOUTH ONE-HALF OF SECTION 27, TOWN-14-NORTH, RANGE-17-WEST, FALLS TOWNSHIP, HOCKING COUNTY, STATE OF OHIO.			