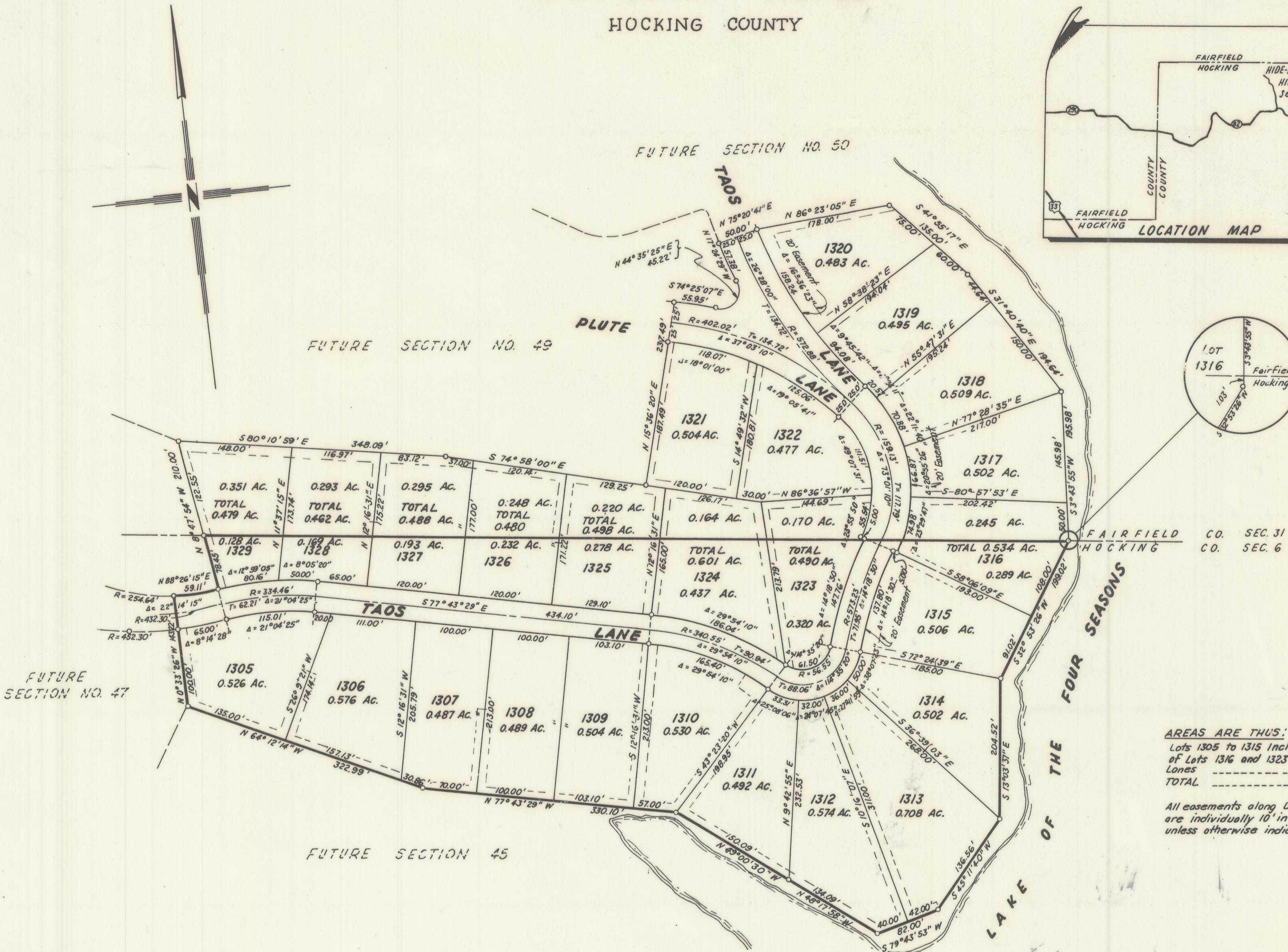
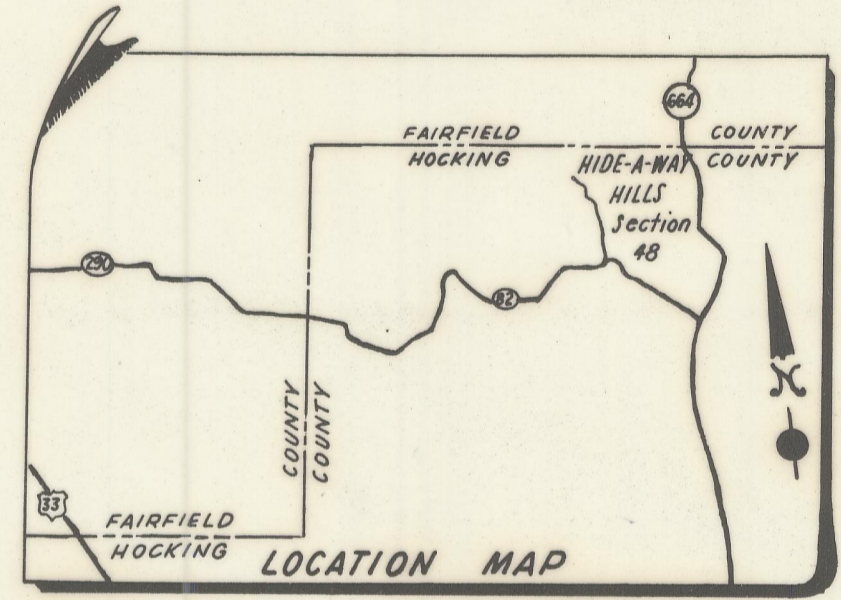


# HIDE-A-WAY HILLS

SECTION NO. 48  
HOCKING COUNTY



AREAS ARE THUS:  
 Lots 1305 to 1315 incl. and parts  
 of Lots 1316 and 1323 to 1329 incl. --- 7.877 AC.  
 Lanes --- 1.045 AC.  
 TOTAL --- 8.922 AC.  
 All easements along Lot lines  
 are individually 10' in width  
 unless otherwise indicated

Situated in the State of Ohio, County of Hocking, Township of Marion, Township 15 North, Range 17, West, Section 6, United States Congress Lands and being 8.922 acres out of a tract of land conveyed to the "HIDE-A-WAY HILLS CO." by deed of record in Deed Book 115, Page 507, Recorder's Office, Hocking County, Ohio. The above described area, containing 8.922 acres of "HIDE-A-WAY HILLS, SECTION NO. 48, comprises lots 1305 to 1315 inclusive and parts of lots 1316 and 1323 to 1329 inclusive. The area of 8.678 acres of HIDE-A-WAY HILLS, SECTION NO. 48, is located in the southwest quarter of Section 31, Township 16 North, Range 17 West, of Rushcreek Township, Fairfield County, and comprises Lots 1317 to 1322 inclusive, and parts of lots 1316 and 1323 to 1329 inclusive.

The Undersigned "HIDE-A-WAY HILLS CO." an Ohio Partnership, by JEDO ESTATES INC. an Ohio Corporation, the Managing Partner, by HYLAS A. HILLIARD, Vice President, duly authorized in the premises, does hereby certify that the plat hereon correctly represents its "HIDE-A-WAY HILLS SECTION NO. 48" a subdivision of Lots 1305 to 1315 inclusive and parts of lots 1316 and 1323 to 1329 inclusive and does hereby accept this plat of same.

Easements are reserved where indicated on the plat for the construction, operation, and maintenance of public utility lines, above and beneath the surface of the ground and where necessary are for the construction, operation and maintenance of service connections to adjacent lots and lands and for storm water drainage. Said easements are also reserved for use as hiking and riding trails by members of the HIDE-A-WAY HILLS CLUB.

IN WITNESS THEREOF, HIDE-A-WAY HILLS CO., an Ohio Partnership by JEDO ESTATES INC., an Ohio Corporation and the Managing Partner, by HYLAS A. HILLIARD, Vice President, has hereunto set his hand this 30 day of August, 1968

WITNESSES  
 Elizabeth Hammons  
 Sandra K. Harding

HIDE-A-WAY HILLS  
 by JEDO ESTATES  
 Hylas A. Hilliard, Vice President

STATE OF OHIO }  
 COUNTY OF FRANKLIN } ss

Before me, a Notary Public, in and for said County personally came HYLAS A. HILLIARD, Vice President, of JEDO ESTATES, INC. Managing Partner of HIDE-A-WAY HILLS CO., who acknowledged the signing of the foregoing certificate to be his voluntary act and deed and the voluntary corporate act and deed of said Corporation for the uses and purposes therein expressed.

IN WITNESS WHEREOF, I have hereunto set my hand and affixed my official seal this 30th day of August, 1968  
 Elizabeth Hammons  
 Notary Public, Hocking County, Ohio  
 My Commission Expires 10-4-69

#4651-9-3-69 See Affidavit in Miss. Recrd. Vol. 3, Page 296 for Correct lot bearings.  
 #9589-8-9-71 See affidavit for correction of inaccuracies in Miss. Recrd. Vol. 3, Page 360

This is to certify that the Board of County Commissioners of Hocking County, Ohio did on the day of , 1968 at a regular session of said Board, approve the plat hereon for the uses and purposes stated therein

Donna Leach, Clerk of Board  
 Howard C. Blum, Thomas J. ...  
 BOARD OF HOCKING COUNTY COMMISSIONERS

Approved this 19 day of Sept, 1968 By David Mungus-Samuelson, Hocking County Board of Health

Approved this 19th day of Sept, 1968 By [Signature], Hocking County Engineer

Transferred on the tax duplicate this 19 day of SEPT, 1968 By Leonard A. Myron, Auditor, Hocking County, Ohio

Received for Record this 19th day of Sept, 1968 at 1:04 P.M. By Esther Carpenter, Recorder, Hocking County, Ohio

Recorded this 19th day of Sept, 1968 in Plat Book E, Page 19 Fee \$5.00 File No. 2571

Prepared By  
 P.E. MARTIN & ASSOCIATES  
 ENGINEERS LAND PLANNERS SURVEYORS  
 Columbus, Ohio

We do hereby certify that we have surveyed the above premises and prepared the attached plat and that said plat is correct. All dimensions are shown in feet and decimal parts thereof. Dimensions on curves are chord measurements.  
 By Philip C. Martin, Registered Surveyor No. 4928