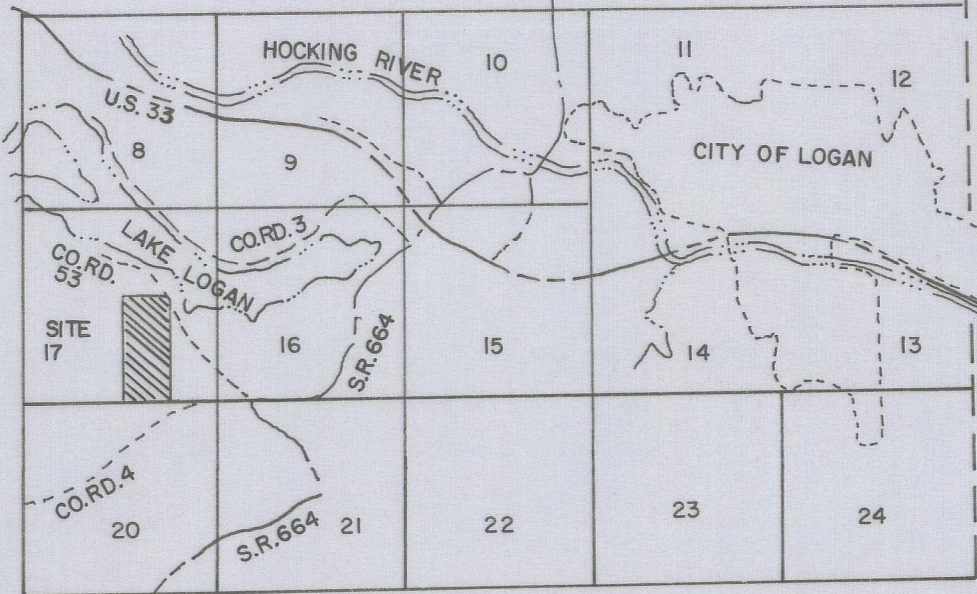


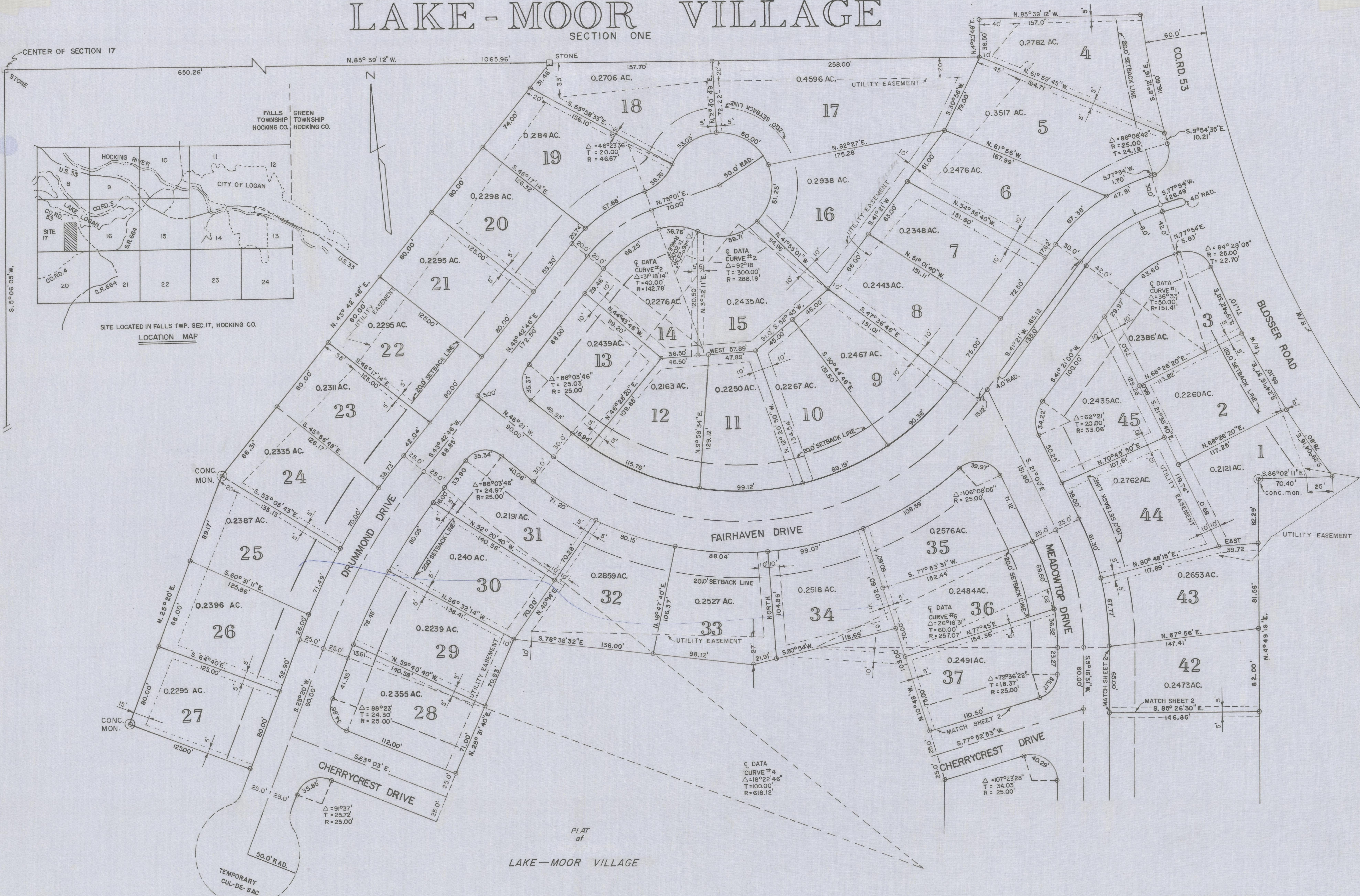
LAKE - MOOR VILLAGE

SECTION ONE

CENTER OF SECTION 17



LOCATION MAP



PLAT
of
LAKE - MOOR VILLAGE

SURVEYED & PLATTED
BY
EVANS, MECHWART, HAMBLETON, & TILTON, INC.
CONSULTING ENGINEERS
SURVEYORS

SCALE 1"=50.0' ATHENS, OHIO GAHANNA, OHIO, SEPT. 30, 1974
We do hereby certify that we have surveyed the above premises and prepared the attached plat and that said plat is correct.
All dimensions are shown in feet and decimal parts thereof.
Dimensions on curves are chord measurements.

By William M. Watkins
Registered Surveyor

AC. IN LOTS	13.466
AC. IN R/W	3.361
TOTAL AC.	16.827

LEGEND:

- ⊙ = CONC. MON.
- = IRON PIN
- = STONE