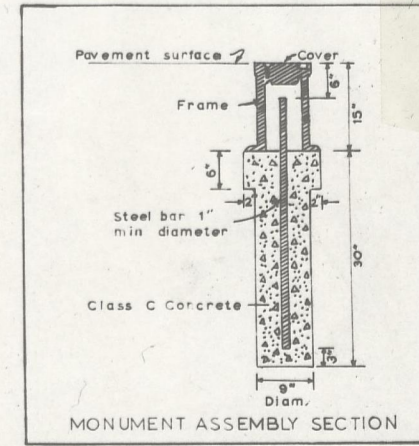
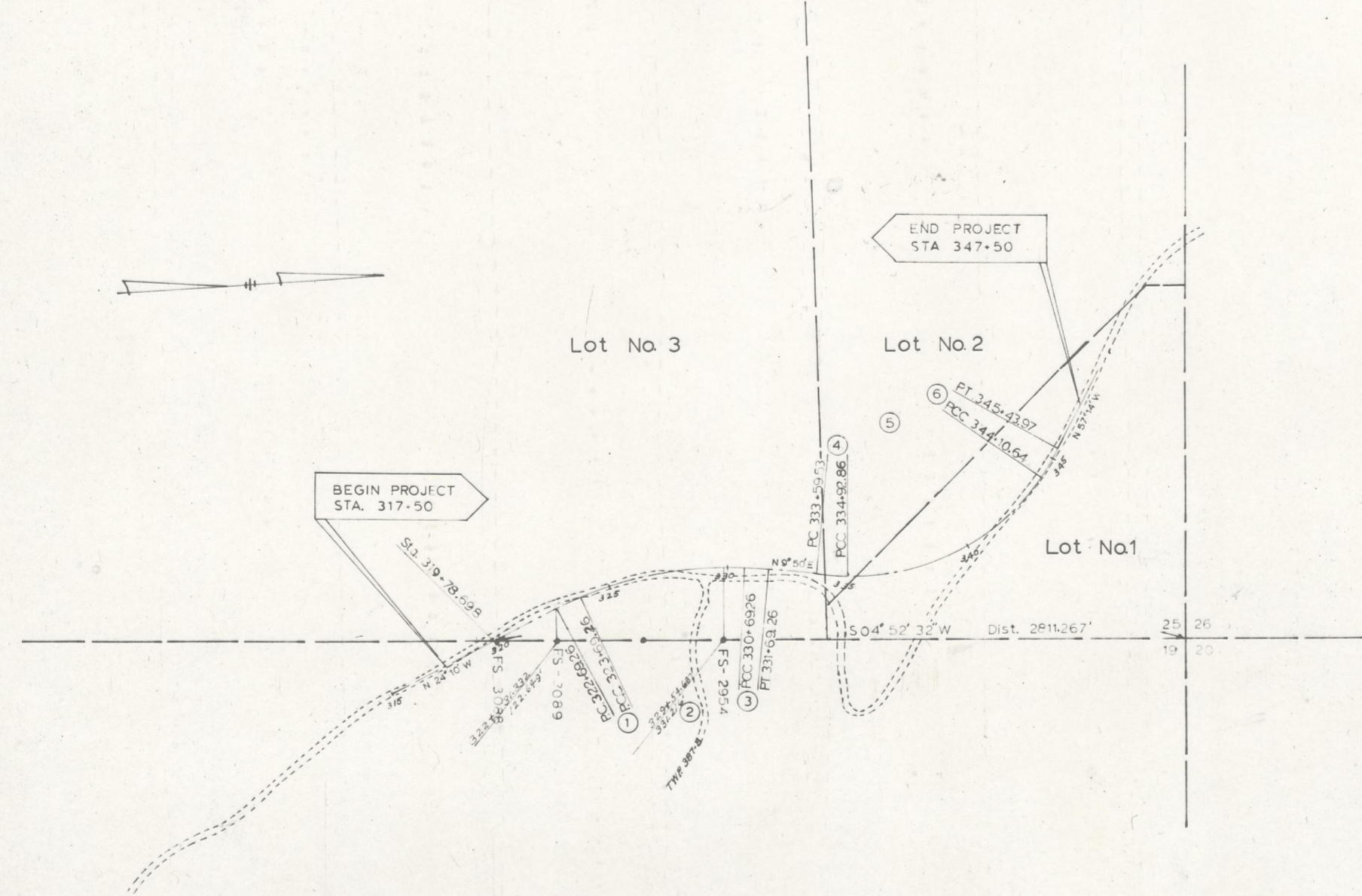


CENTERLINE SURVEY PLAT
HOC-278-6.00
WARD TOWNSHIP
Sec's 19 & 25, R15W - T13N

29892
Date Received July 27, 1966
Date Recorded July 27, 1966
Book D Page 53
Signed Esther Carpenter
County Recorder
Date _____



MONUMENT ASSEMBLIES SHALL BE SET ON CENTER LINE OF SURVEY AT THE FOLLOWING STATIONS

- POT. 317+00
- POT. 320+00
- PCC 323+69.26
- PCC 327+00
- PCC 330+69.26
- POT. 332+25
- POT. 332+75
- PCC 334+92.86
- PCC 340+00
- PCC 344+10.64
- POT. 346+25
- POT. 347+50

①	②	③	④	⑤	⑥
PI = 323+19.27 Δ = 3° 00' Rt. D = 3° 00' T = 50.01' L = 100.00' R = 1909.86'	PI = 327+32.38 Δ = 28° 00' Rt. D = 4° 00' T = 357.139' L = 700.00' R = 1432.396'	PI = 331+19.27 Δ = 3° 00' Rt. D = 3° 00' T = 50.01' L = 100.00' R = 1909.86'	PI = 334+26.27 Δ = 6° 00' Lt. D = 4° 30' T = 66.74' L = 133.33' R = 1273.24'	PI = 340+26.86 Δ = 55° 04' Lt. D = 6° 00' T = 497.815' L = 917.78' R = 954.93'	PI = 344+77.38 Δ = 6° 00' Lt. D = 4° 30' T = 66.74' L = 133.33' R = 1273.24'

I hereby certify that this plat is a true delineation of a survey made for the Ohio Department of Highways in 1965
Signed Glenn Williams
Registered Surveyor No. 1682
Date July 27, 1966

SURVEYORS SEAL

