

0122
 RECEIVED October 1971 1:51 P.M. 2.00
 RECORDED October 1971
 BOOK E PAGE 14
 Leather Carpenter
 COUNTY RECORDER

#12468 5/25/72 See Corrected Plat Page 15

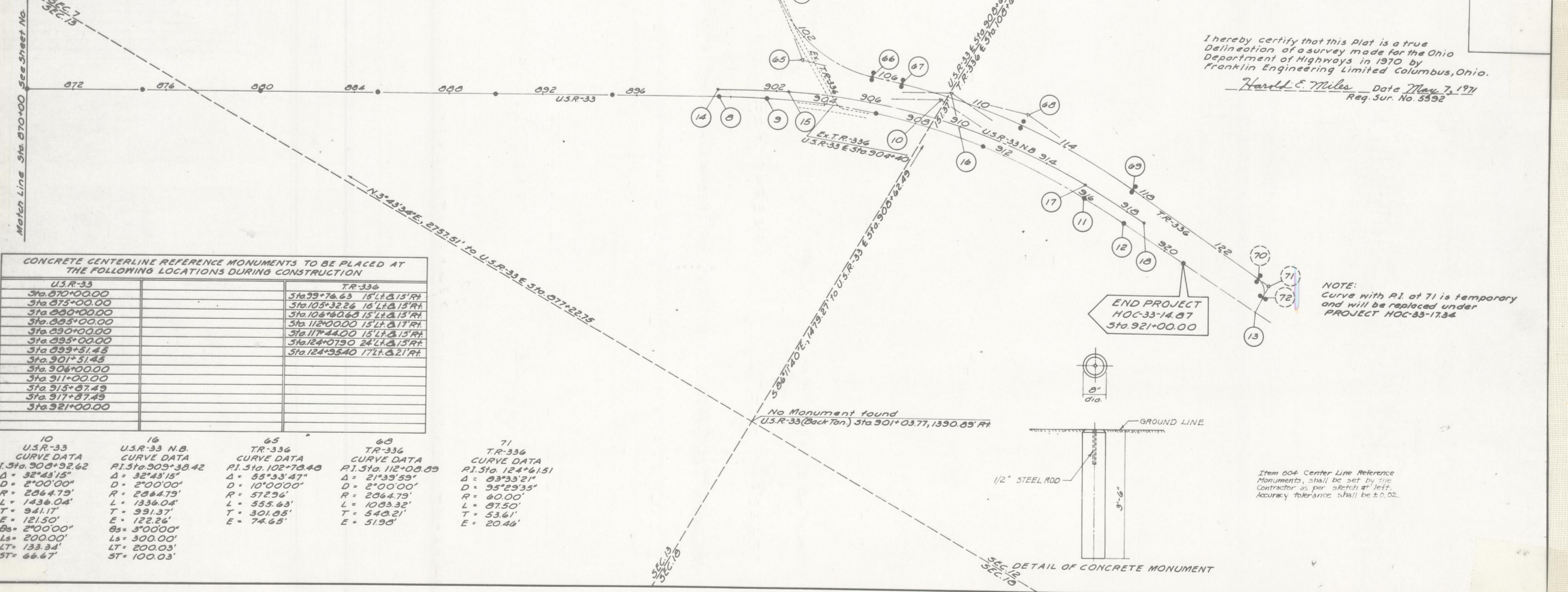
CENTERLINE SURVEY PLAT

U.S. ROUTE 33 SECTION 14.68
 HOCKING COUNTY, OHIO
 GREEN TWP. T.13N., R.16W., SEC'S.13&7
 STARR TWP. T.12N., R.16W., SEC.12
 OHIO COMPANY SECOND PURCHASE

FED. RD. DIVISION	STATE	PROJECT
2	OHIO	

HOCKING COUNTY
 HOC-33-14.67
 LIMITED ACCESS
 R/W ACQUIRED AS HOC-33-14.67
 SHEET 2 OF 2

REF. NO.	BEARING	STATION
U.S.R-33		
5 to 10	326°33'56"E	
8		T.S. Sta. 899+51.45
9		S.C. Sta. 901+51.45
10		P.I. Sta. 908+92.62
10 to 13	36°09'19"W	
11		C.S. Sta. 915+87.49
12		S.T. Sta. 917+87.49
13		P.O.T. Sta. 924+61.99
U.S.R-33 N.B.		
14		T.S. Sta. 899+47.05
14 to 16	326°33'56"E	
15		S.C. Sta. 902+47.05
16		P.I. Sta. 909+38.42
16 to 18	36°09'19"W	
17		C.S. Sta. 915+83.09
18		S.T. Sta. 918+83.09
T.R-336		
64		P.C. Sta. 99+76.63
64 to 65	541°29'46"W	
65		P.I. Sta. 102+78.48
65 to 66	314°04'01"E	
66		P.T. Sta. 105+32.26
67		P.C. Sta. 106+60.68
68		P.I. Sta. 112+08.89
68 to 71	57°35'58"W	
69		P.T. Sta. 117+44.00
70		P.C. Sta. 124+07.90
71		P.I. Sta. 124+61.51
71 to 13	N 88°50'41"W	
72		P.T. Sta. 124+95.40
13		P.O.T. Sta. 125+68.16



This improvement has been declared a Limited Access Highway by action of the Director of Highways on 4/21/70 and recorded in Volume 55, Page 289 of the Directors Journal, Pursuant to Law.

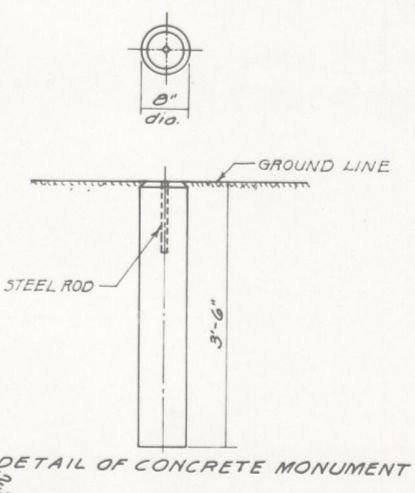
I hereby certify that this Plat is a true Delineation of a survey made for the Ohio Department of Highways in 1970 by Franklin Engineering Limited Columbus, Ohio.
 Harold E. Miles Date May 7, 1971
 Reg. Sur. No. 5392

CONCRETE CENTERLINE REFERENCE MONUMENTS TO BE PLACED AT THE FOLLOWING LOCATIONS DURING CONSTRUCTION

U.S.R-33	T.R-336
Sta. 870+00.00	Sta. 99+76.63 15' Lt. & 15' Rt.
Sta. 875+00.00	Sta. 105+32.26 16' Lt. & 15' Rt.
Sta. 880+00.00	Sta. 106+60.68 15' Lt. & 15' Rt.
Sta. 885+00.00	Sta. 112+08.89 15' Lt. & 17' Rt.
Sta. 890+00.00	Sta. 117+44.00 15' Lt. & 15' Rt.
Sta. 895+00.00	Sta. 124+07.90 24' Lt. & 15' Rt.
Sta. 899+51.45	Sta. 124+95.40 17' Lt. & 21' Rt.
Sta. 901+51.45	
Sta. 906+00.00	
Sta. 911+00.00	
Sta. 915+87.49	
Sta. 917+87.49	
Sta. 921+00.00	

10	16	65	68	71
U.S.R-33	U.S.R-33 N.B.	T.R-336	T.R-336	T.R-336
CURVE DATA	CURVE DATA	CURVE DATA	CURVE DATA	CURVE DATA
RI. Sta. 908+92.62	RI. Sta. 909+38.42	RI. Sta. 102+78.48	RI. Sta. 112+08.89	RI. Sta. 124+61.51
Δ = 32°43'15"	Δ = 32°43'15"	Δ = 85°33'47"	Δ = 21°33'59"	Δ = 83°33'21"
D = 2°00'00"	D = 2°00'00"	D = 10°00'00"	D = 2°00'00"	D = 35°29'35"
R = 2864.79'	R = 2864.79'	R = 572.96'	R = 2864.79'	R = 60.00'
L = 1436.04'	L = 1336.04'	L = 555.63'	L = 1083.32'	L = 87.50'
T = 941.17'	T = 991.37'	T = 301.85'	T = 540.21'	T = 53.61'
E = 121.50'	E = 122.26'	E = 74.65'	E = 51.98'	E = 20.46'
Os = 2°00'00"	Os = 3°00'00"			
Ls = 200.00'	Ls = 300.00'			
LT = 133.34'	LT = 200.03'			
ST = 66.67'	ST = 100.03'			

END PROJECT
 HOC-33-14.67
 Sta. 921+00.00



Item 604 Center Line Reference Monuments, shall be set by the Contractor as per sketch at left. Accuracy tolerance shall be ±0.02.

No Monument found
 (U.S.R-33 Back Ten) Sta. 901+03.77, 1390.85' Rt.