

# REVISED CENTER LINE SURVEY PLAT

## LOGAN LANCASTER ROAD

U. S. ROUTE 33 SEC. HOC-33-7.51

HOCKING COUNTY OHIO

FALLS TWP., R-17-W T-14-N SECS. 9,10,15,16

THIS IMPROVEMENT HAS BEEN DECLARED A LIMITED ACCESS HIGHWAY FROM STATION TO STATION BY ACTION OF THE DIRECTOR OF HIGHWAYS AND RECORDED IN VOLUME 47 PAGE 340 OF THE DIRECTORS JOURNAL PURSUANT TO LAW.

CO. RD. 3 CONN.  
MONUMENT ASSEMBLIES  
P.C. = 10+79.28  
P.T. = 13+48.74  
P.O.T. = 15+55.00  
REFERENCE MONUMENTS  
P.I. = 12+22.68

STATIONS AND OFFSETS WITHIN THE LIMITS OF CENTER LINE SURVEY SPIRALS ARE REFERENCED TO THE SPIRAL TANGENTS.

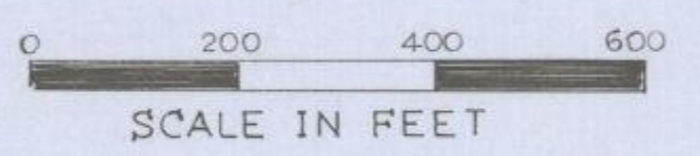
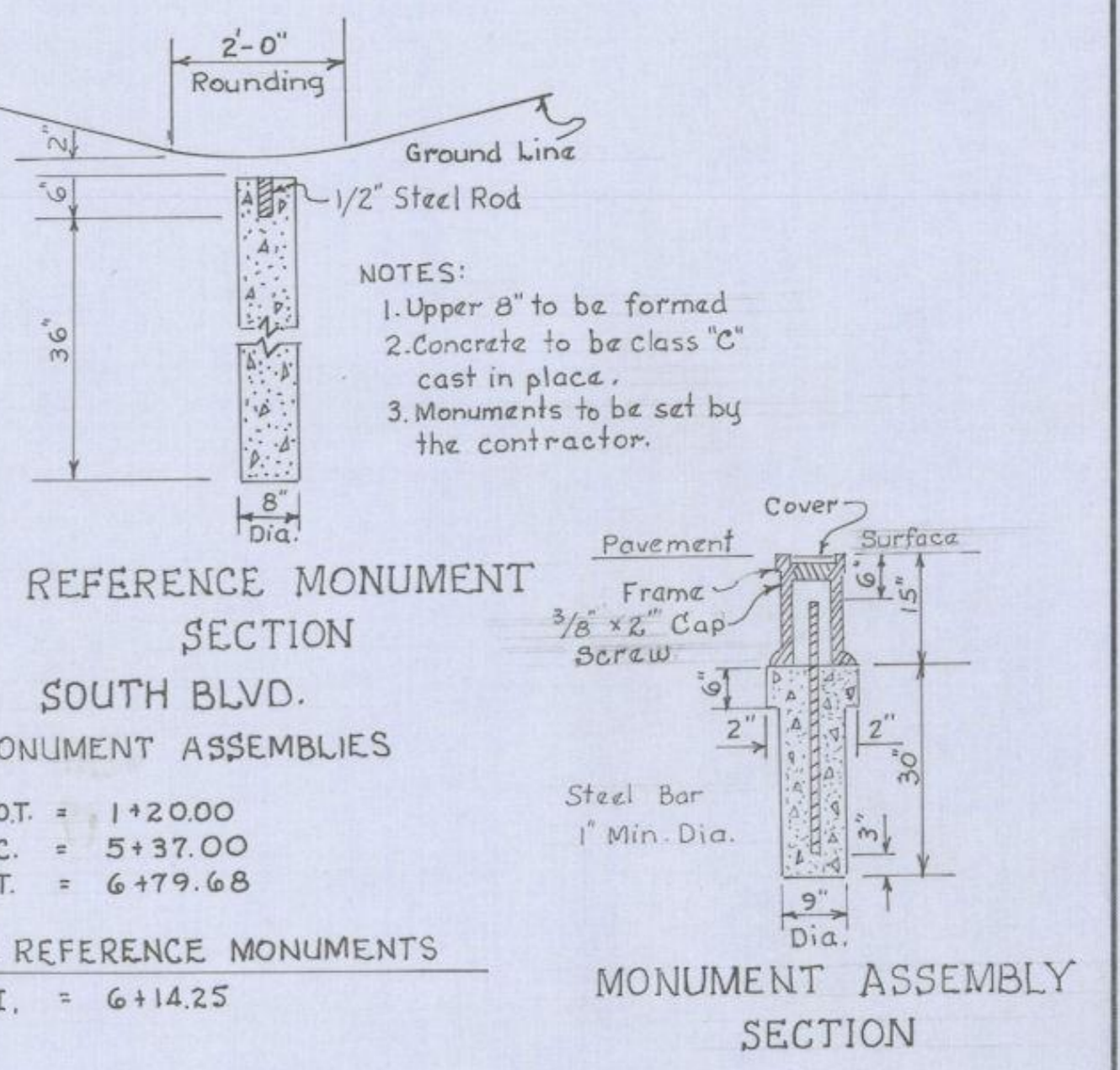
Received April 8 1970  
at 12:29 P.M.  
Recorded April 8 1970  
Book E Page 34  
Cathie Carpenter  
County Recorder

FED. RD. DIVISION	STATE	PROJECT	86 98
2	OHIO		

HOC-33-7.51

1 13
---------

U.S.R. 33  
REFERENCE MONUMENTS  
P.O.C. = 162+00  
C.S. = 166+16.25  
S.T. = 169+16.31 Bk = 169+16.25 Ah.  
P.O.T. = 173+00  
T.S. = 176+15.14  
S.C. = 180+15.43 Bk = 180+15.14 Ah.  
C.S. = 183+37.96  
S.T. = 187+38.25 Bk = 187+37.96 Ah.  
P.O.T. = 187+88.80  
P.O.T. = 192+00  
P.O.T. = 197+00  
P.O.T. = 202+00  
P.O.T. = 206+00  
T.S. = 209+89.99  
S.C. = 213+90.19 Bk = 213+89.99 Ah.  
P.O.C. = 218+00



§ SURVEY CURVE DATA  
P.I. = 156 + 62.68  
Δ = 46°-59'-20"  
Dc = 2°-00'-00"  
Ls = 300.00'  
Ts = 1395.87'  
Lc = 2049.44'  
Θs = 3°-00'-00"  
Es = 260.38'  
L.T. = 200.03'  
S.T. = 100.03'

RELOC. T.H. 52A CURVE DATA  
P.I. = 6+85.52  
Δ = 56°-58'-00"  
R = 358.10'  
T = 194.30'  
L = 356.04'

SOUTH BLVD. CURVE DATA  
P.I. = 6+14.25  
Δ = 54°-30'-00"  
R = 150.00'  
T = 77.25'  
L = 142.68'  
D = 38°-11'-50"

§ SURVEY CURVE DATA  
P.I. = 220 + 77.16  
Δ = 42°-16'-35"  
Dc = 2°-30'-00"  
Ls = 400.00'  
Ts = 1087.17'  
Lc = 1291.06'  
Θs = 5°-00'-00"  
Es = 168.47'  
L.T. = 266.77'  
S.T. = 133.43'

§ SURVEY CURVE DATA  
P.I. = 181 + 81.52  
Δ = 21°-41'-05"  
Dc = 3°-00'-00"  
Ls = 400.00'  
Ts = 1086.38'  
Lc = 322.82'  
Θs = 6°-00'-00"  
Es = 38.26'  
L.T. = 266.82'  
S.T. = 133.47'

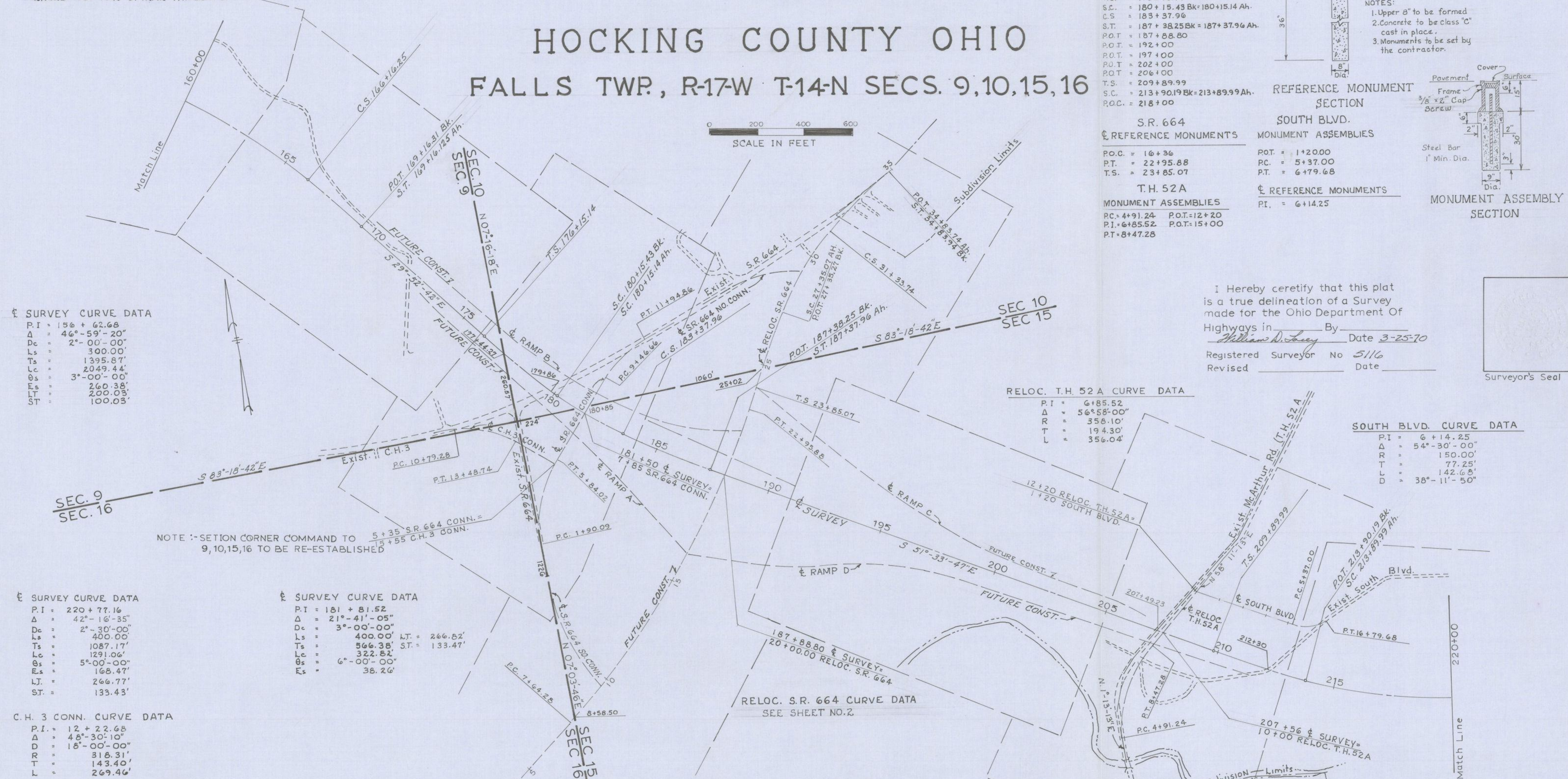
C.H. 3 CONN. CURVE DATA  
P.I. = 12 + 22.68  
Δ = 48°-30'-10"  
D = 18°-00'-00"  
R = 318.31'  
T = 143.40'  
L = 269.46'

RELOC. S.R. 664 CURVE DATA  
SEE SHEET NO. 2

NOTE :-SECTION CORNER COMMAND TO 9,10,15,16 TO BE RE-ESTABLISHED

I Hereby certify that this plat is a true delineation of a Survey made for the Ohio Department Of Highways in \_\_\_\_\_ By William D. Lacey Date 3-25-70  
Registered Surveyor No 5116  
Revised \_\_\_\_\_ Date \_\_\_\_\_

Surveyor's Seal



FALLS TOWNSHIP