

CENTERLINE SURVEY PLAT

LOGAN-LANCASTER ROAD

U.S. ROUTE 33 SEC. 9.50

HOCKING COUNTY, OHIO

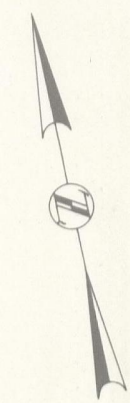
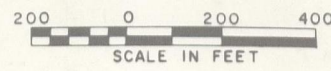
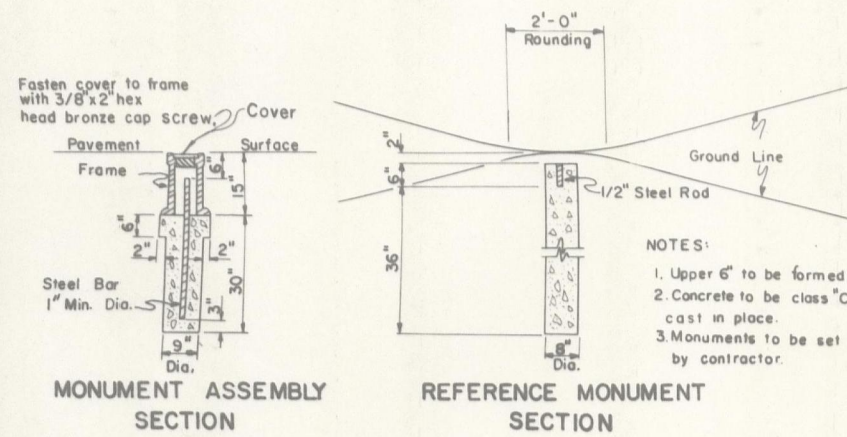
FALLS TWP. T14N, R17W, SEC. 13 & 14

FED. RD. DIVISION	STATE	PROJECT
2	OHIO	

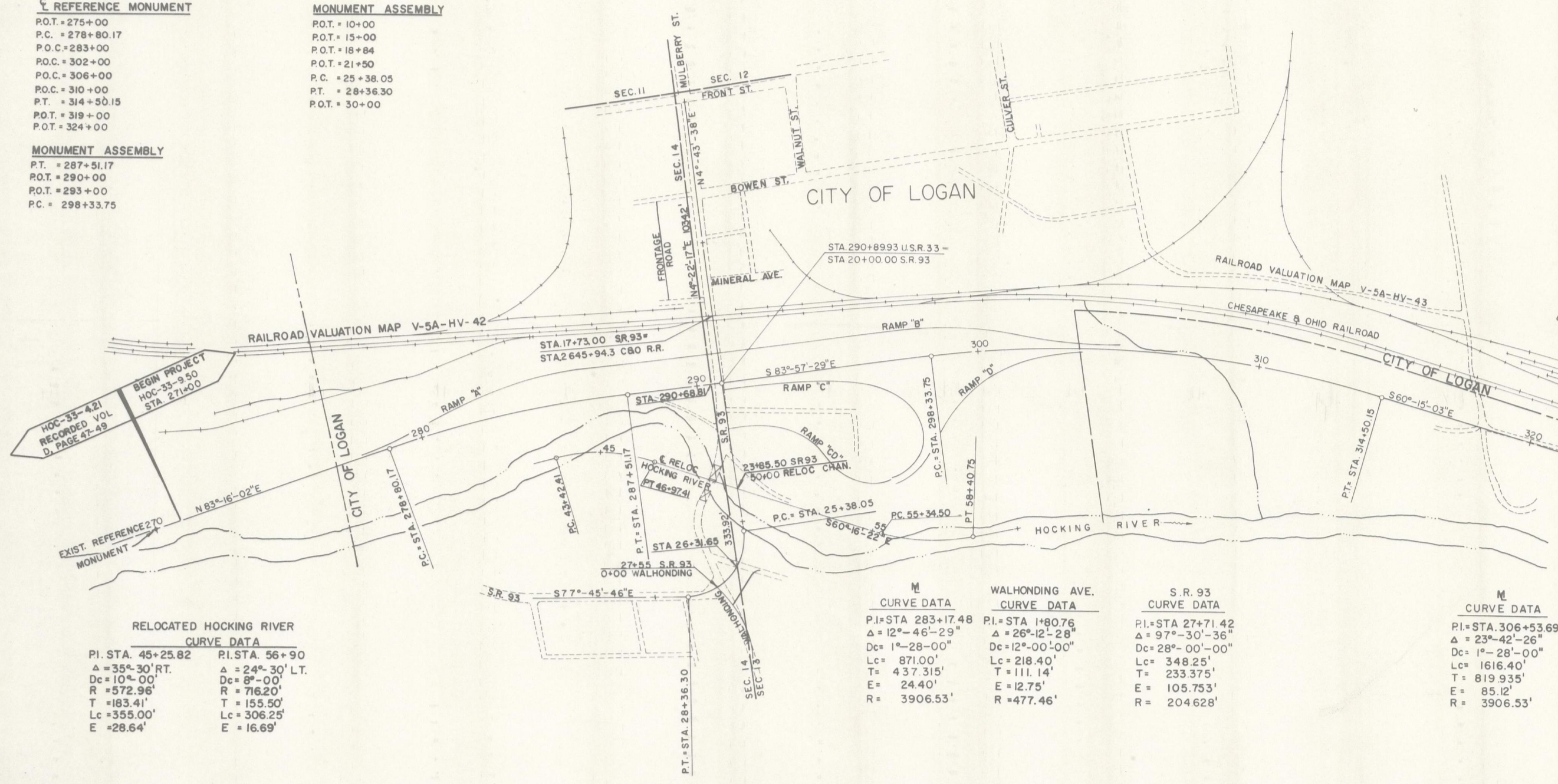
HOCKING COUNTY
HOC-33-9.50
LIMITED ACCESS

160
173

1
14



<p>U.S.R. 33</p> <p>REFERENCE MONUMENT</p> <p>P.O.T. = 275+00 P.C. = 278+80.17 P.O.C. = 283+00 P.O.C. = 302+00 P.O.C. = 306+00 P.O.C. = 310+00 P.T. = 314+50.15 P.O.T. = 319+00 P.O.T. = 324+00</p> <p>MONUMENT ASSEMBLY</p> <p>P.T. = 287+51.17 P.O.T. = 290+00 P.O.T. = 293+00 P.C. = 298+33.75</p>	<p>S.R. 93</p> <p>MONUMENT ASSEMBLY</p> <p>P.O.T. = 10+00 P.O.T. = 15+00 P.O.T. = 18+84 P.O.T. = 21+50 P.C. = 25+38.05 P.T. = 28+36.30 P.O.T. = 30+00</p>
---	--



I hereby certify that this plat is a true delineation of a survey made for the Ohio Department of Highways in 1965 by Louis Berger and Associates.
Signed: *Louis Berger*
Registered Surveyor No. 4952
Date: June 16, 1966

END PROJECT HOC-33-9.50 STA 324+00	BEGIN PROJECT HOC-33-10.50 STA 324+00
--	---

LIMITED ACCESS

This improvement has been declared a limited access highway from station to station by action of the Director of Highways, and recorded in Volume 50, Page 366 of the Director's Journal pursuant to law.

Signed: _____
Division Deputy Director

Date: # 30096 AT 1:50 P.M.
Date Received: Aug. 18, 1966
Date Recorded: Aug. 18, 1966
Book: D Page: 49
Signed: *Esther Carpenter*
County Recorder

RELOCATED HOCKING RIVER

CURVE DATA	
PI. STA. 45+25.82	PI. STA. 56+90
Δ = 35°-30' RT.	Δ = 24°-30' LT.
Dc = 10'-00"	Dc = 8'-00"
R = 572.96'	R = 716.20'
T = 183.41'	T = 155.50'
Lc = 355.00'	Lc = 306.25'
E = 28.64'	E = 16.69'

M	WALHONDING AVE.	S.R. 93
CURVE DATA		
PI. = STA 283+17.48	PI. = STA 1+80.76	PI. = STA 27+71.42
Δ = 12°-46'-29"	Δ = 26°-12'-28"	Δ = 97°-30'-36"
Dc = 1°-28'-00"	Dc = 12°-00'-00"	Dc = 28°-00'-00"
Lc = 871.00'	Lc = 218.40'	Lc = 348.25'
T = 437.315'	T = 111.14'	T = 233.375'
E = 24.40'	E = 12.75'	E = 105.753'
R = 3906.53'	R = 477.46'	R = 204628'

M

CURVE DATA

PI. = STA. 306+53.69
Δ = 23°-42'-26"
Dc = 1°-28'-00"
Lc = 1616.40'
T = 819.935'
E = 85.12'
R = 3906.53'