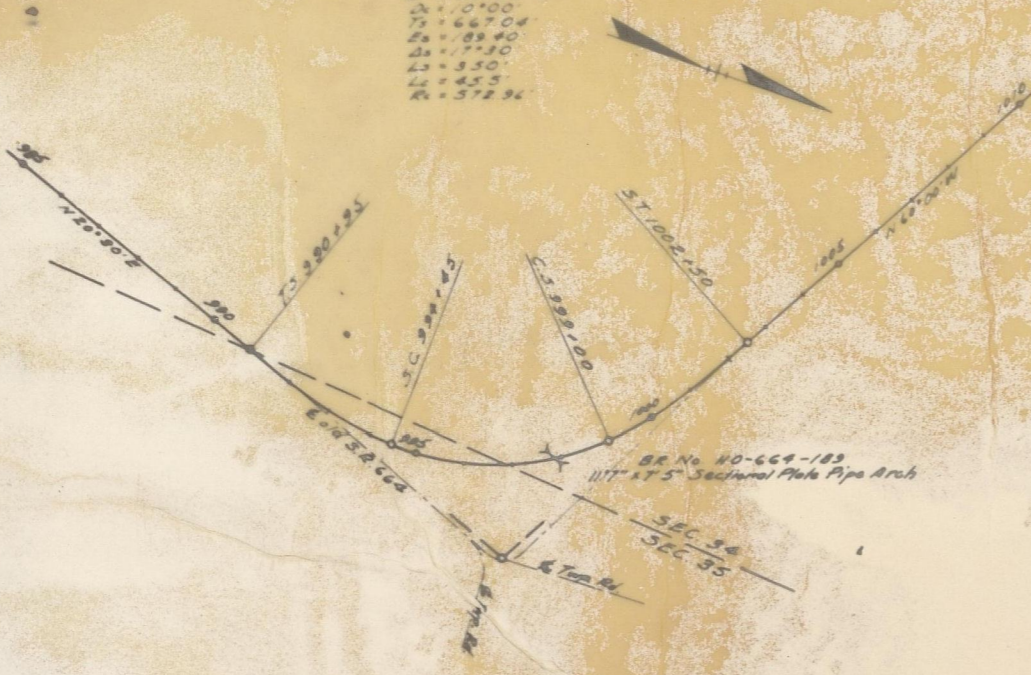


HOC-664-18.77
HOCKING COUNTY, MARION TWP
SEC 34 & 35, T15N, R17W

PI = 1187.4209
Δ = 80°30'
D = 10°00'
T = 667.04'
E = 81.40'
L = 17.30'
L = 45.5'
R = 372.94'



HOC-664-21.23
HOCKING COUNTY, MARION TWP
SEC 22, T15N, R17W

BR No. HO-664-2
Cable Pass

PI = 1122.5209
Δ = 36°00'
D = 15°00'
T = 192.09'
E = 81.40'
L = 12.00'
L = 17.50'
R = 351.10'



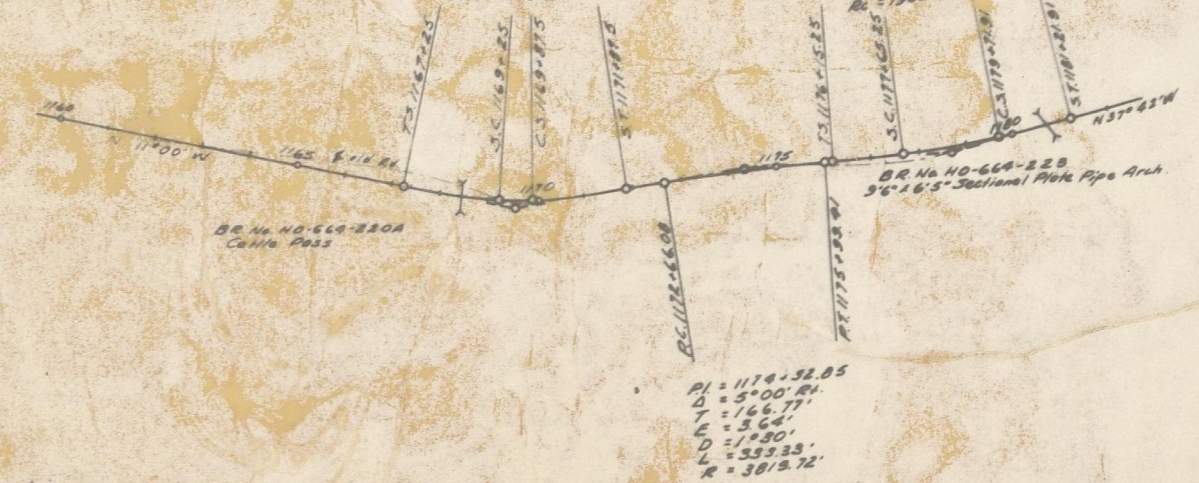
Received Oct. 10 at Logan Ohio
Recorded
Plat Book No. 6 Page 7
Signed *Ethel Carpenter*
Fed 1.00

LOCATION PLAN
HOC-664-(18.77-
21.23-21.95-23.00)
HOCKING COUNTY
BREMEN ASH CAVE RD. 1/1

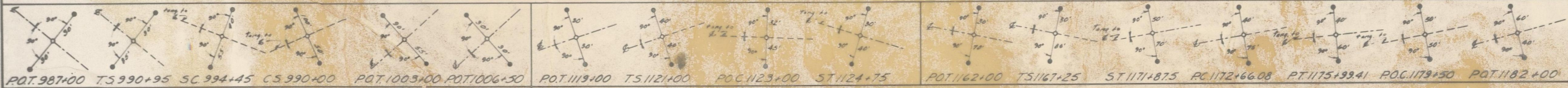
HOC-664-21.95
HOCKING COUNTY, MARION TWP
SEC. 15, T15N, R17W

PI = 1163.581
Δ = 21°00'
D = 3°00'
T = 233.1'
E = 14.6'
L = 8.00'
L = 200'
L = 62.5'
R = 76.2'

PI = 1178.6918
Δ = 10°42'
D = 3°00'
T = 253.90'
E = 2.85'
L = 2.5'
L = 150'
L = 206.66'
R = 1908.06'

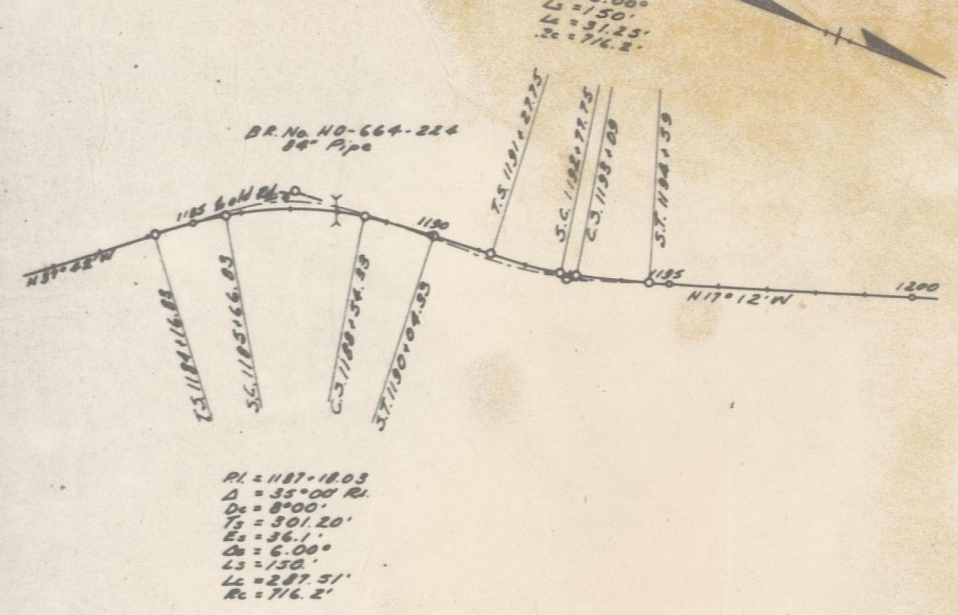


Center line reference monuments will be set after construction



HOC-664-21.95
HOCKING COUNTY, MARION TWP
SEC. 15, T15N, R17W

PI = 1182.54
Δ = 18°30'
D = 8°00'
T = 166.25'
E = 7.10'
L = 1.50'
L = 31.23'
R = 176.2'

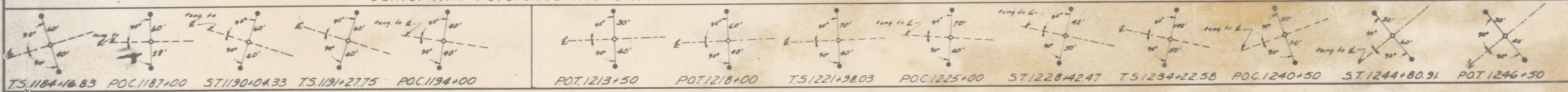


HOC-664-23.00
HOCKING COUNTY, MARION TWP
SEC. 10, T15N, R17W

PI = 1239.82
Δ = 31°30'
D = 6°00'
T = 361.42'
E = 6.00'
L = 2.25'
L = 658.33'
R = 394.32'



Center line reference monuments will be set after construction



Approved: *Ethel Carpenter* E72288
DIVISION ENGINEER
Date 8-24-55