

GLENVIEW HEIGHTS ANNEXATION

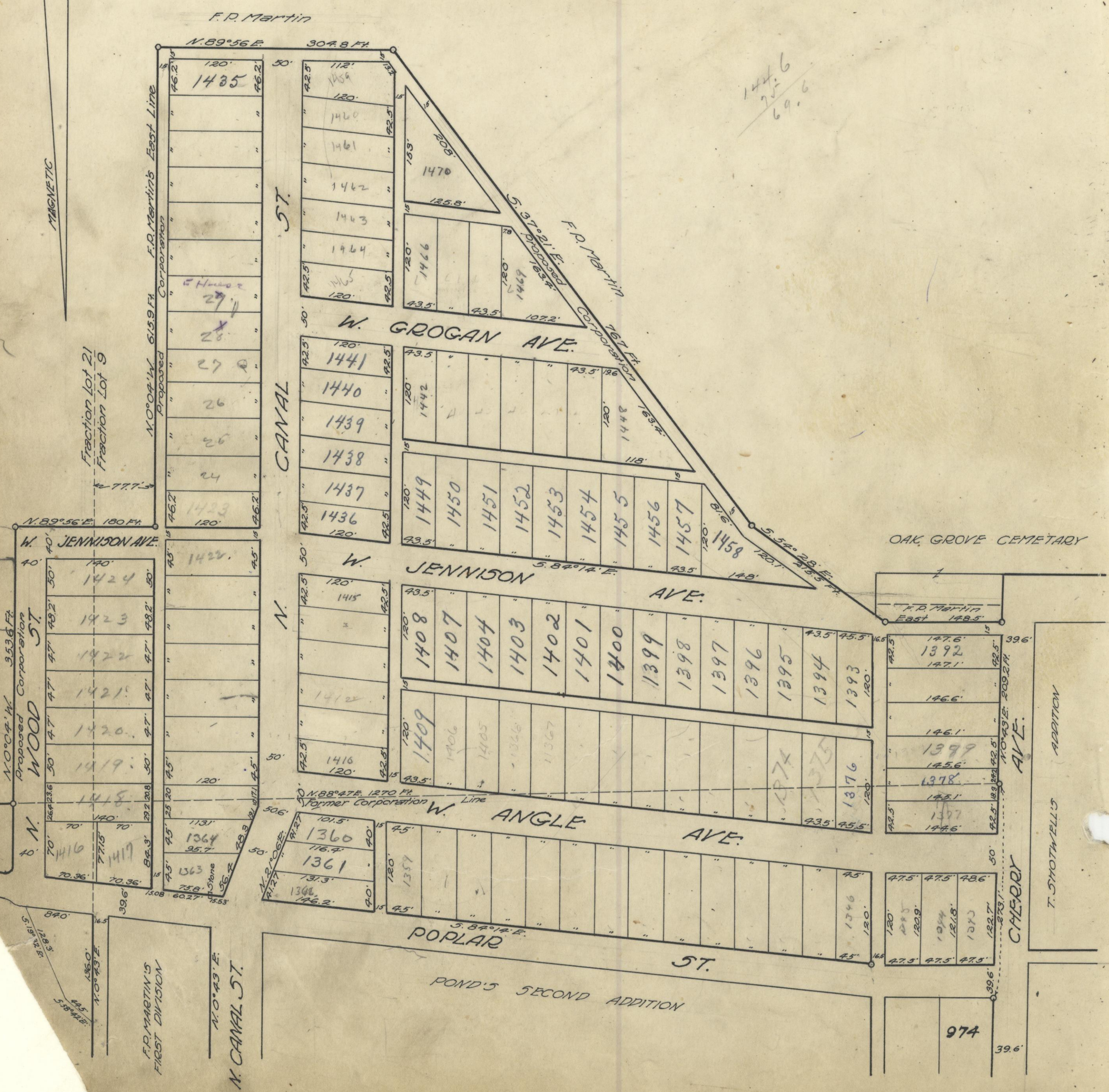
PLAT

SHOWING ANNEXATION OF TERRITORY TO THE CITY OF LOGAN, OHIO. ALSO SHOWING SUBDIVISIONS OF SAID TERRITORY AS HERETOFORE LAID OUT AND PLATTED, INCLUDING LOTS AND PARTS OF LOTS BELONGING TO SAID SUBDIVISIONS WITHIN THE PRESENT CITY CORPORATION BOUNDS. PART OF THE PLAT SHOWN HEREON IS KNOWN AS GLENVIEW HEIGHTS ALLOTMENT, PLAT RECORDS BOOK B, PAGE 44. THE OTHER PORTION OF SAME HAVE NOT HERETOFORE BEEN RECORDED.

#4695 9/14/2000
See Ordinance vacating alleyway
Or V-177 Page 585

Variation 4° West

NORTH



$\frac{144.6}{25.6} = 69.6$

OAK GROVE CEMETARY

T. SHOTWELL'S ADDITION

974

39.6'