

W
b7
b8

Falls Twp
Sec 14
42.280 Acres

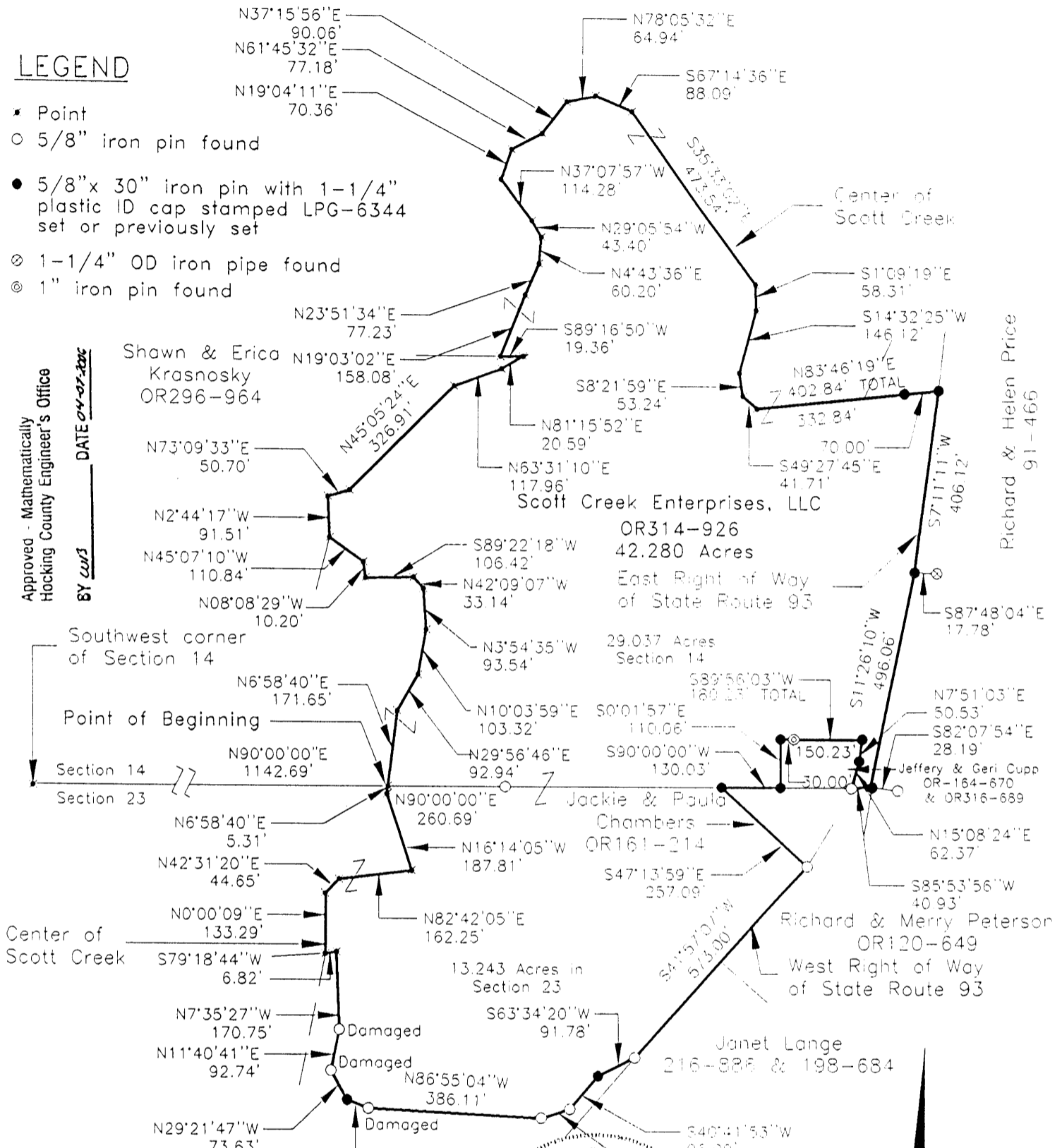
PLAT OF A 42.280 ACRE TRACT FOR SCOTT CREEK ENTERPRISES

Situated in Falls Township, Hocking County, Ohio; being part of Fractional Lot 1 of Section 14 and part of the Northwest quarter of Section 23, both of Township 14, Range 17.

LEGEND

- Point
- 5/8" iron pin found
- 5/8"x 30" iron pin with 1-1/4" plastic ID cap stamped LPG-6344 set or previously set
- ⊗ 1-1/4" OD iron pipe found
- ⊙ 1" iron pin found

Approved - Mathematically
Hocking County Engineer's Office
BY WJG DATE 04-07-2006



REFERENCES:

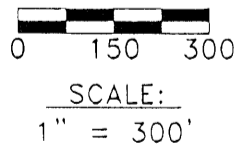
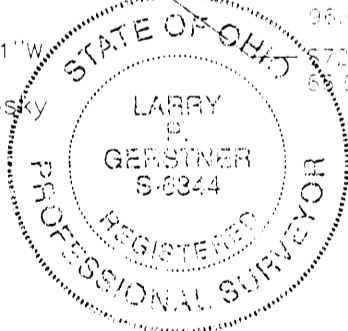
- Tax maps
- Deed descriptions Dennis & Diane Krasnosky 198-445
- Previous surveys
- Existing monumentation
- Existing public road
- U.S. 33 Highway plans

REFERENCE BEARING:

The South line of Section 14 as North 90 degrees 00 minutes 00 seconds East. Bearings are based upon an assumed meridian and are to denote angles only.

CERTIFICATION:

I hereby certify that an actual survey was made under my supervision of the premises shown hereon on the 30th day of November, 2004 and the 6th day of April, 2006 and that the plat is a correct representation of the premises as described by said survey.



Larry P. Gerstner
Registered Surveyor No. 6344

Survey by: Larry P. Gerstner - Engineering and Surveying
9 East Second Street, Suite A, Logan, Ohio 43138
(740) 385-4260

SURVEY DESCRIPTION OF A 42.280 ACRE TRACT FOR SCOTT CREEK ENTERPRISES

Situated in Falls Township, Hocking County, Ohio; being part of Fractional Lot 1 of Section 14, and part of the Northwest quarter of Section 23, both of Township 14, Range 17; and being more particularly described as follows:

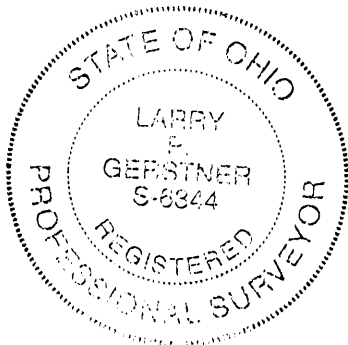
Commencing for reference at a point at the Southwest corner of Section 14; thence with the South line of Section 14 North 90 degrees 00 minutes 00 seconds East a distance of 1142.69 feet to a point in the center of Scott Creek, from which a 5/8" iron pin found bears North 90 degrees 00 minutes 00 seconds East at a distance of 260.69 feet, and being the point of **Beginning** of the tract of land to be described;

thence leaving the South line of Section 14 and with the center of Scott Creek the following thirty bearings and distances:

- 1) North 6 degrees 58 minutes 40 seconds East a distance of 171.65 feet to a point;
 - 2) North 29 degrees 56 minutes 46 seconds East a distance of 92.94 feet to a point;
 - 3) North 10 degrees 03 minutes 59 seconds East a distance of 103.32 feet to a point;
 - 4) North 3 degrees 54 minutes 35 seconds West a distance of 93.54 feet to a point;
 - 5) North 42 degrees 09 minutes 07 seconds West a distance of 33.14 feet to a point;
 - 6) South 89 degrees 22 minutes 18 seconds West a distance of 106.42 feet to a point;
 - 7) North 8 degrees 08 minutes 29 seconds West a distance of 10.20 feet to a point;
 - 8) North 45 degrees 07 minutes 10 seconds West a distance of 110.84 feet to a point;
 - 9) North 2 degrees 44 minutes 17 seconds West a distance of 91.51 feet to a point;
 - 10) North 73 degrees 09 minutes 33 seconds East a distance of 50.70 feet to a point;
 - 11) North 45 degrees 05 minutes 24 seconds East a distance of 326.91 feet to a point;
 - 12) North 63 degrees 31 minutes 10 seconds East a distance of 117.96 feet to a point;
 - 13) North 81 degrees 15 minutes 52 seconds East a distance of 20.59 feet to a point;
 - 14) South 89 degrees 16 minutes 50 seconds West a distance of 19.36 feet to a point;
 - 15) North 19 degrees 03 minutes 02 seconds East a distance of 158.08 feet to a point;
 - 16) North 23 degrees 51 minutes 34 seconds East a distance of 77.23 feet to a point;
 - 17) North 4 degrees 43 minutes 36 seconds East a distance of 60.20 feet to a point;
 - 18) North 29 degrees 05 minutes 54 seconds West a distance of 43.40 feet to a point;
 - 19) North 37 degrees 07 minutes 57 seconds West a distance of 114.28 feet to a point;
 - 20) North 19 degrees 04 minutes 11 seconds East a distance of 70.36 feet to a point;
 - 21) North 61 degrees 45 minutes 32 seconds East a distance of 77.18 feet to a point;
 - 22) North 37 degrees 15 minutes 56 seconds East a distance of 90.06 feet to a point;
 - 23) North 78 degrees 05 minutes 32 seconds East a distance of 64.94 feet to a point;
 - 24) South 67 degrees 14 minutes 36 seconds East a distance of 88.09 feet to a point;
 - 25) South 35 degrees 33 minutes 02 seconds East a distance of 473.54 feet to a point;
 - 26) South 1 degree 09 minutes 19 seconds East a distance of 58.31 feet to a point;
 - 27) South 14 degrees 32 minutes 25 seconds West a distance of 146.12 feet to a point;
 - 28) South 8 degrees 21 minutes 59 seconds East a distance of 53.24 feet to a point;
 - 29) South 49 degrees 27 minutes 45 seconds East a distance of 41.71 feet to a point;
 - 30) North 83 degrees 46 minutes 19 seconds East a distance of 402.84 feet to a 5/8" iron pin set on the East right of way of State Route 93 and passing a 5/8" iron pin set at a distance of 332.84 feet;
- thence leaving the center of Scott Creek and with the East right of way of State Route 93 South 7 degrees 11 minutes 11 seconds West a distance of 406.12 feet to a 5/8" iron pin previously set from which a 1-1/4" OD iron pipe found bears South 87 degrees 48 minutes 04 seconds East at a distance of 17.78 feet;
- thence continuing with the East right of way of State Route 93 South 11 degrees 26 minutes 10 seconds West a distance of 496.06 feet to a 5/8" iron pin previously set, from which a 5/8" iron pin found bears South 82 degrees 07 minutes 54 seconds East at a distance of 28.19 feet;
- thence crossing State Route 93 South 85 degrees 53 minutes 56 seconds West a distance of 40.93 feet to a 5/8" iron pin found on the South line of Section 14;
- thence leaving the South line of Section 14 North 15 degrees 08 minutes 24 seconds East a distance of 62.37 feet to a 5/8" iron pin previously set;
- thence North 7 degrees 51 minutes 03 seconds East a distance of 50.53 feet to a 5/8" iron pin previously set;
- thence South 89 degrees 56 minutes 03 seconds West a distance of 180.23 feet to a 5/8" iron pin previously set and passing a 1" iron pin found at a distance of 150.23 feet;
- thence South 0 degrees 01 minute 57 seconds East a distance of 110.06 feet to a 5/8" iron pin previously set on the South line of Section 14;
- thence with the South line of Section 14 South 90 degrees 00 minutes 00 seconds West a

distance of 130.03 feet to a 5/8" iron pin set;
 thence leaving the South line of Section 14 and going into Section 23 South 47 degrees 13 minutes 59 seconds East a distance of 257.09 feet to a 5/8" iron pin found on the West right of way of State Route 93;
 thence with the West right of way of State Route 93 South 41 degrees 57 minutes 07 seconds West a distance of 573.00 feet to a 5/8" iron pin found;
 thence leaving the West right of way of State Route 93 South 63 degrees 34 minutes 20 seconds West a distance of 91.78 feet to a 5/8" iron pin set;
 thence South 40 degrees 41 minutes 53 seconds West a distance of 96.09 feet to a 5/8" iron pin found;
 thence South 72 degrees 31 minutes 28 seconds West a distance of 66.96 feet to a 5/8" iron pin found;
 thence North 86 degrees 55 minutes 04 seconds West a distance of 386.11 feet to a damaged 5/8" iron pin found;
 thence North 68 degrees 48 minutes 21 seconds West a distance of 50.79 feet to a 5/8" iron pin set;
 thence North 29 degrees 21 minutes 47 seconds West a distance of 73.63 feet to a damaged 5/8" iron pin found;
 thence North 11 degrees 40 minutes 41 seconds East a distance of 92.74 feet to a damaged 5/8" iron pin found;
 thence North 7 degrees 35 minutes 27 seconds West a distance of 170.75 feet to a point in Scott Creek;
 thence South 79 degrees 18 minutes 44 seconds West a distance of 6.82 feet to a point in the center of Scott Creek;
 thence with the center of Scott Creek the following five bearings and distances:
 1) North 0 degrees 00 minutes 09 seconds East a distance of 133.29 feet to a point;
 2) North 42 degrees 31 minutes 20 seconds East a distance of 44.65 feet to a point;
 3) North 82 degrees 42 minutes 05 seconds East a distance of 162.25 feet to a point;
 4) North 16 degrees 14 minutes 05 seconds West a distance of 187.81 feet to a point;
 5) North 6 degrees 58 minutes 40 seconds East a distance of 5.31 feet to the point of beginning,
 containing 42.280 acres more or less, with 29.037 acres more or less being in Section 14 and 13.243 acres more or less being in Section 23, and subject to the public easement of State Route 93 and any other public or private easements of record.

The above 42.280 acre survey is intended to describe part of the 118.729 acre and 43.2688 acre surveyed tracts as deeded to Scott Creek Enterprises, LLC, deed reference Volume OR314, Page 926, Hocking County Recorder's Office. This survey was based upon information obtained from tax maps, deed descriptions, previous surveys, existing monumentation, U. S. 33 Highway plans, and an existing road. The reference bearing for this survey is the South line of Section 14 as North 90 degrees 00 minutes 00 seconds East. Bearings are based upon an assumed meridian and are to denote angles only. All iron pins set by this survey or previously set are 5/8" by 30" and are capped by a 1-1/4" plastic identification cap stamped LPG-6344. The above described property was surveyed by Larry P. Gerstner, Ohio Registered Surveyor No. 6344, on November 30, 2004 and April 6, 2006.



Approved - Mathematically
 Hocking County Engineer's Office
 BY WJB DATE 04-07-2006

Larry P. Gerstner

Survey by:
 Larry P. Gerstner - Engineering and Surveying
 9 East Second Street, Suite A, Logan, Ohio 43138 740-385-4260

606
619

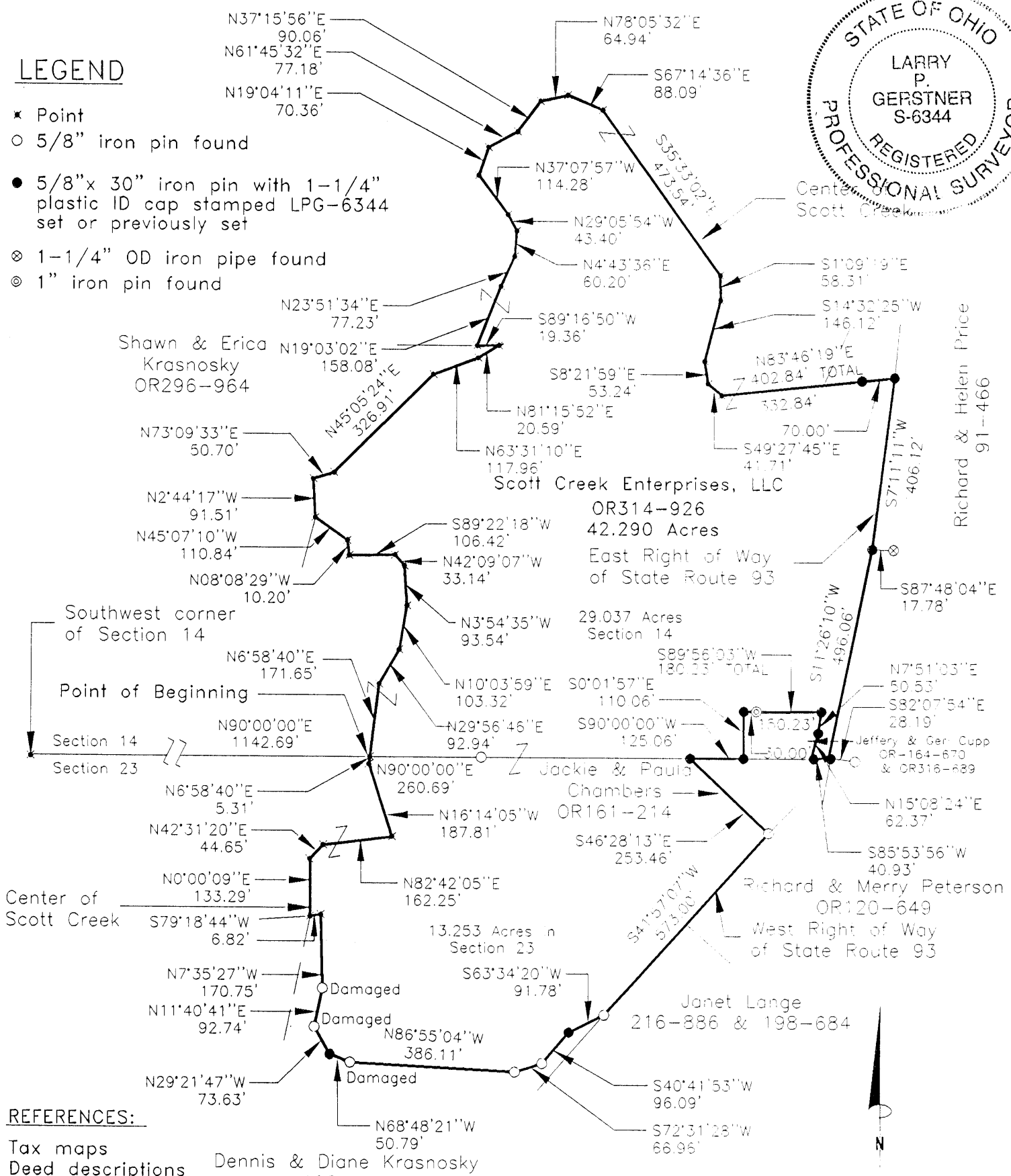
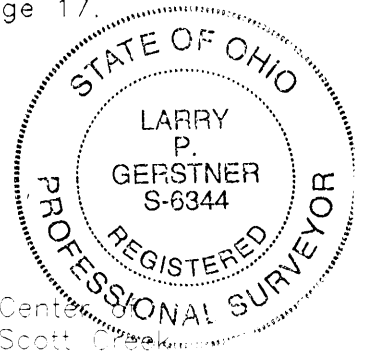
Falls Twp.
Sec 23, 19
42.290 Ac.

PLAT OF A 42.290 ACRE TRACT FOR SCOTT CREEK ENTERPRISES

Situated in Falls Township, Hocking County, Ohio; being part of Fractional Lot 1 of Section 14 and part of the Northwest quarter of Section 23, both of Township 14, Range 17.

LEGEND

- ✱ Point
- 5/8" iron pin found
- 5/8"x 30" iron pin with 1-1/4" plastic ID cap stamped LPG-6344 set or previously set
- ⊗ 1-1/4" OD iron pipe found
- ⊙ 1" iron pin found

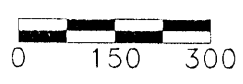


REFERENCES:

- Tax maps
 - Deed descriptions
 - Previous surveys
 - Existing monumentation
 - Existing public road
 - U.S. 33 Highway plans
- Dennis & Diane Krasnosky
198-445

Approved - Mathematically
Hocking County Engineer's Office

BY LWG DATE 12-22-04



SCALE:
1" = 300'

REFERENCE BEARING:

The South line of Section 14 as North 90 degrees 00 minutes 00 seconds East. Bearings are based upon an assumed meridian and are to denote angles only.

CERTIFICATION:

I hereby certify that an actual survey was made under my supervision of the premises shown hereon on the 30th day of November, 2004 and that the plat is a correct representation of the premises as described by said survey.

Larry P. Gerstner
Registered Surveyor No. 6344

Survey by: Larry P. Gerstner - Engineering and Surveying
9 East Second Street, Suite A, Logan, Ohio 43138
(740) 385-4260

SURVEY DESCRIPTION OF A 42.290 ACRE TRACT FOR SCOTT CREEK ENTERPRISES

Situated in Falls Township, Hocking County, Ohio; being part of Fractional Lot 1 of Section 14, and part of the Northwest quarter of Section 23, both of Township 14, Range 17; and being more particularly described as follows:

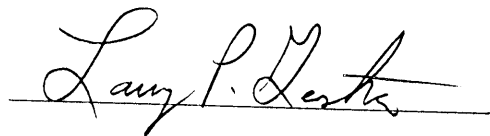
Commencing for reference at a point at the Southwest corner of Section 14; thence with the South line of Section 14 North 90 degrees 00 minutes 00 seconds East a distance of 1142.69 feet to a point in the center of Scott Creek, from which a 5/8" iron pin found bears North 90 degrees 00 minutes 00 seconds East at a distance of 260.69 feet, and being the point of **Beginning** of the tract of land to be described;

thence leaving the South line of Section 14 and with the center of Scott Creek the following thirty bearings and distances:

- 1) North 6 degrees 58 minutes 40 seconds East a distance of 171.65 feet to a point;
 - 2) North 29 degrees 56 minutes 46 seconds East a distance of 92.94 feet to a point;
 - 3) North 10 degrees 03 minutes 59 seconds East a distance of 103.32 feet to a point;
 - 4) North 3 degrees 54 minutes 35 seconds West a distance of 93.54 feet to a point;
 - 5) North 42 degrees 09 minutes 07 seconds West a distance of 33.14 feet to a point;
 - 6) South 89 degrees 22 minutes 18 seconds West a distance of 106.42 feet to a point;
 - 7) North 8 degrees 08 minutes 29 seconds West a distance of 10.20 feet to a point;
 - 8) North 45 degrees 07 minutes 10 seconds West a distance of 110.84 feet to a point;
 - 9) North 2 degrees 44 minutes 17 seconds West a distance of 91.51 feet to a point;
 - 10) North 73 degrees 09 minutes 33 seconds East a distance of 50.70 feet to a point;
 - 11) North 45 degrees 05 minutes 24 seconds East a distance of 326.91 feet to a point;
 - 12) North 63 degrees 31 minutes 10 seconds East a distance of 117.96 feet to a point;
 - 13) North 81 degrees 15 minutes 52 seconds East a distance of 20.59 feet to a point;
 - 14) South 89 degrees 16 minutes 50 seconds West a distance of 19.36 feet to a point;
 - 15) North 19 degrees 03 minutes 02 seconds East a distance of 158.08 feet to a point;
 - 16) North 23 degrees 51 minutes 34 seconds East a distance of 77.23 feet to a point;
 - 17) North 4 degrees 43 minutes 36 seconds East a distance of 60.20 feet to a point;
 - 18) North 29 degrees 05 minutes 54 seconds West a distance of 43.40 feet to a point;
 - 19) North 37 degrees 07 minutes 57 seconds West a distance of 114.28 feet to a point;
 - 20) North 19 degrees 04 minutes 11 seconds East a distance of 70.36 feet to a point;
 - 21) North 61 degrees 45 minutes 32 seconds East a distance of 77.18 feet to a point;
 - 22) North 37 degrees 15 minutes 56 seconds East a distance of 90.06 feet to a point;
 - 23) North 78 degrees 05 minutes 32 seconds East a distance of 64.94 feet to a point;
 - 24) South 67 degrees 14 minutes 36 seconds East a distance of 88.09 feet to a point;
 - 25) South 35 degrees 33 minutes 02 seconds East a distance of 473.54 feet to a point;
 - 26) South 1 degree 09 minutes 19 seconds East a distance of 58.31 feet to a point;
 - 27) South 14 degrees 32 minutes 25 seconds West a distance of 146.12 feet to a point;
 - 28) South 8 degrees 21 minutes 59 seconds East a distance of 53.24 feet to a point;
 - 29) South 49 degrees 27 minutes 45 seconds East a distance of 41.71 feet to a point;
 - 30) North 83 degrees 46 minutes 19 seconds East a distance of 402.84 feet to a 5/8" iron pin set on the East right of way of State Route 93 and passing a 5/8" iron pin set at a distance of 332.84 feet;
- thence leaving the center of Scott Creek and with the East right of way of State Route 93 South 7 degrees 11 minutes 11 seconds West a distance of 406.12 feet to a 5/8" iron pin previously set from which a 1-1/4" OD iron pipe found bears South 87 degrees 48 minutes 04 seconds East at a distance of 17.78 feet;
- thence continuing with the East right of way of State Route 93 South 11 degrees 26 minutes 10 seconds West a distance of 496.06 feet to a 5/8" iron pin previously set, from which a 5/8" iron pin found bears South 82 degrees 07 minutes 54 seconds East at a distance of 28.19 feet;
- thence crossing State Route 93 South 85 degrees 53 minutes 56 seconds West a distance of 40.93 feet to a 5/8" iron pin found on the South line of Section 14;
- thence leaving the South line of Section 14 North 15 degrees 08 minutes 24 seconds East a distance of 62.37 feet to a 5/8" iron pin previously set;
- thence North 7 degrees 51 minutes 03 seconds East a distance of 50.53 feet to a 5/8" iron pin previously set;
- thence South 89 degrees 56 minutes 03 seconds West a distance of 180.23 feet to a 5/8" iron pin previously set and passing a 1" iron pin found at a distance of 150.23';
- thence South 0 degrees 01 minute 57 seconds East a distance of 110.06 feet to a 5/8" iron pin previously set on the South line of Section 14;
- thence with the South line of Section 14 South 90 degrees 00 minutes 00 seconds West a

distance of 125.06 feet to a 5/8" iron pin set;
thence leaving the South line of Section 14 and going into Section 23 South 46 degrees 38 minutes 13 seconds East a distance of 253.46 feet to a 5/8" iron pin found on the West right of way of State Route 93;
thence with the West right of way of State Route 93 South 41 degrees 57 minutes 07 seconds West a distance of 573.00 feet to a 5/8" iron pin found;
thence leaving the West right of way of State Route 93 South 63 degrees 34 minutes 20 seconds West a distance of 91.78 feet to a 5/8" iron pin set;
thence South 40 degrees 41 minutes 53 seconds West a distance of 96.09 feet to a 5/8" iron pin found;
thence South 72 degrees 31 minutes 28 seconds West a distance of 66.96 feet to a 5/8" iron pin found;
thence North 86 degrees 55 minutes 04 seconds West a distance of 386.11 feet to a damaged 5/8" iron pin found;
thence North 68 degrees 48 minutes 21 seconds West a distance of 50.79 feet to a 5/8" iron pin set;
thence North 29 degrees 21 minutes 47 seconds West a distance of 73.63 feet to a damaged 5/8" iron pin found;
thence North 11 degrees 40 minutes 41 seconds East a distance of 92.74 feet to a damaged 5/8" iron pin found;
thence North 7 degrees 35 minutes 27 seconds West a distance of 170.75 feet to a point in Scott Creek;
thence South 79 degrees 18 minutes 44 seconds West a distance of 6.82 feet to a point in the center of Scott Creek;
thence with the center of Scott Creek the following five bearings and distances:
1) North 0 degrees 00 minutes 09 seconds East a distance of 133.29 feet to a point;
2) North 42 degrees 31 minutes 20 seconds East a distance of 44.65 feet to a point;
3) North 82 degrees 42 minutes 05 seconds East a distance of 162.25 feet to a point;
4) North 16 degrees 14 minutes 05 seconds West a distance of 187.81 feet to a point;
5) North 6 degrees 58 minutes 40 seconds East a distance of 5.31 feet to the point of beginning, containing 42.290 acres more or less, with 29.037 acres more or less being in Section 14 and 13.253 acres more or less being in Section 23, and subject to the public easement of State Route 93 and any other public or private easements of record.

The above 42.290 acre survey is intended to describe part of the 118.729 acre and 43.2688 acre surveyed tracts as deeded to Scott Creek Enterprises, LLC, deed reference Volume OR314, Page 926, Hocking County Recorder's Office. This survey was based upon information obtained from tax maps, deed descriptions, previous surveys, existing monumentation, U. S. 33 Highway plans, and an existing road. The reference bearing for this survey is the South line of Section 14 as North 90 degrees 00 minutes 00 seconds East. Bearings are based upon an assumed meridian and are to denote angles only. All iron pins set by this survey or previously set are 5/8" by 30" and are capped by a 1-1/4" plastic identification cap stamped LPG-6344. The above described property was surveyed by Larry P. Gerstner, Ohio Registered Surveyor No. 6344, on November 30, 2004.



Approved - Mathematically
Hocking County Engineer's Office

BY WLB DATE 12-22-04

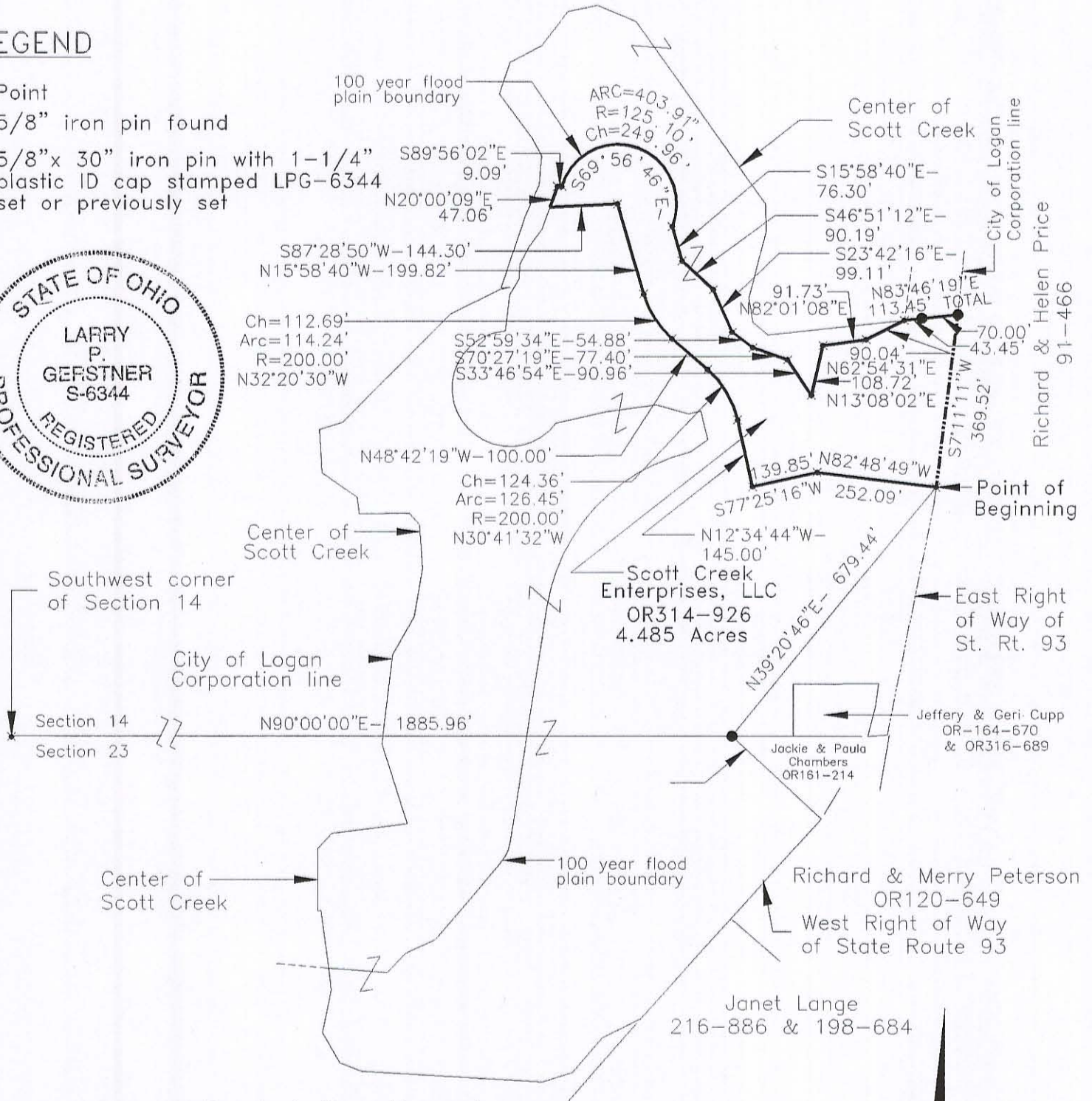
Survey by:
Larry P. Gerstner - Engineering and Surveying
9 East Second Street, Suite A, Logan, Ohio 43138 740-385-4260

PLAT OF A 4.485 ACRE TRACT FOR LOTS 1-13 LOCATED
ABOVE THE 100 YEAR FLOOD PLAIN FOR SCOTT CREEK ESTATES SUBDIVISION

Situated in Falls Township, City of Logan, Hocking County, Ohio; being part of Fractional Lot 1 of Section 14, Township 14, Range 17; and being part of Scott Creek Estates Subdivision.

LEGEND

- × Point
- 5/8" iron pin found
- 5/8"x 30" iron pin with 1-1/4" plastic ID cap stamped LPG-6344 set or previously set

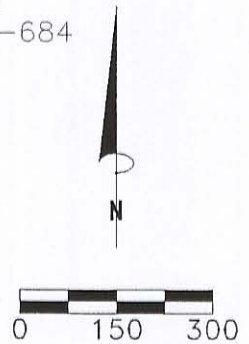


REFERENCES:

Dennis & Diane Krasnosky
198-445

- Tax maps
- Deed descriptions
- Previous surveys
- Existing monumentation
- Existing public road
- U.S. 33 Highway plans
- 100 year flood plain elevations

APPROVED MATHEMATICALLY
Hocking County Engineer's Office
By: FN Date: M. 9 D. 8 Y. 2010
CW



SCALE:
1" = 300'

REFERENCE BEARING:

The South line of Section 14 as North 90 degrees 00 minutes 00 seconds East. Bearings are based upon an assumed meridian and are to denote angles only.

CERTIFICATION:

I hereby certify that an actual survey was made under my supervision of the premises shown hereon on the 30th day of November, 2004, the 6th day of April, 2006, and the 13th day of July, 2010 and that the plat is a correct representation of the premises as described by said survey.

Larry P. Gerstner
Registered Surveyor No. 6344

Survey by: Larry P. Gerstner - Engineering and Surveying
11200 State Route 374, Rockbridge, Ohio 43149
(740) 385-4260

**SURVEY DESCRIPTION OF A 4.485 ACRE TRACT FOR LOTS 1-13 LOCATED
ABOVE THE 100 YEAR FLOOD PLAIN FOR SCOTT CREEK ESTATES
SUBDIVISION**

Situated in Falls Township, City of Logan, Hocking County, Ohio; being part of Fractional Lot 1 of Section 14, Township 14, Range 17; being part of Scott Creek Estates Subdivision; and being more particularly described as follows:

Commencing for reference at a point at the Southwest corner of Section 14; thence with the South line of Section 14 North 90 degrees 00 minutes 00 seconds East a distance of 1885.96 feet to a 5/8" iron pin previously set; thence leaving the South line of Section 14 North 39 degrees 20 minutes 46 seconds East a distance of 679.44 feet to a point on the East right of way of State Route 93 on the City of Logan Corporation line and being the point of **Beginning** of the tract of land to be described;

thence leaving the East right of way of State Route 93 and going into the City of Logan North 82 degrees 48 minutes 49 seconds West a distance of 252.09 feet to a point;

thence South 77 degrees 25 minutes 16 seconds West a distance of 139.85 feet to a point;

thence North 12 degrees 34 minutes 44 seconds West a distance of 145.00 feet to a point;

thence with a curve to the left having a chord bearing North 30 degrees 41 minutes 32 seconds West at a chord distance of 124.36 feet, an arc distance of 126.45 feet, and a radius of 200.00 feet to a point;

thence North 48 degrees 42 minutes 19 seconds West a distance of 100.00 feet to a point;

thence with a curve to the right having a chord bearing North 32 degrees 20 minutes 30 seconds West at a chord distance of 112.69 feet, an arc distance of 114.24 feet, and a radius of 200.00 feet to a point;

thence North 15 degrees 58 minutes 40 seconds West a distance of 199.82 feet to a point;

thence South 87 degrees 28 minutes 50 seconds West a distance of 144.30 feet to a point at the 100 year flood plain boundary;

thence with the 100 year flood plain boundary the following twelve bearings and distances:

1) North 20 degrees 00 minutes 09 seconds East a distance of 47.06 feet to a point;

2) South 89 degrees 56 minutes 02 seconds East a distance of 9.09 feet to a point;

3) with a curve to the right having a chord bearing South 69 degrees 56 minutes 46 seconds East at a chord distance of 249.96 feet, an arc distance of 403.91 feet, and a radius of 125.10 feet to a point;

4) South 15 degrees 58 minutes 40 seconds East a distance of 76.30 feet to a point;

5) South 46 degrees 51 minutes 12 seconds East a distance of 90.19 feet to a point;

6) South 23 degrees 42 minutes 16 seconds East a distance of 99.11 feet to a point;

7) South 52 degree 59 minutes 34 seconds East a distance of 54.88 feet to a point;

8) South 70 degrees 27 minutes 19 seconds East a distance of 77.40 feet to a point;

9) South 33 degrees 46 minutes 54 seconds East a distance of 90.96 feet to a point;

10) North 13 degrees 08 minutes 02 seconds East a distance of 108.72 feet to a point;

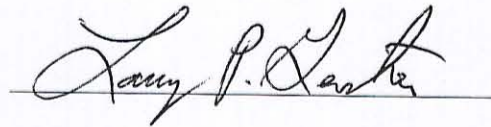
11) North 82 degrees 01 minute 08 seconds East a distance of 91.73 feet to a point;

12) North 62 degrees 54 minutes 31 seconds East a distance of 90.04 feet to a point;

thence leaving the 100 year flood plain boundary North 83 degrees 46 minutes 19 seconds East a distance of 113.45 feet to a 5/8" iron pin set on the East right of way of State Route 93 and

the City of Logan Corporation line and passing a 5/8" iron pin set at a distance of 43.45 feet; thence with the East right of way of State Route 93 and the City of Logan Corporation line South 7 degrees 11 minutes 11 seconds West a distance of 369.52 feet to the point of beginning, containing 4.485 acres more or less, and subject to the public easement of State Route 93 and any other public or private easements of record.

The above 4.485 acre survey is intended to describe part of the 42.280 acre Scott Creek Estates Subdivision lying above the 100 year flood plain as platted in Plat cabinet 2, Pages 141-143, Hocking County Recorder's Office and belonging to Scott Creek Enterprises, LLC by Official Records Volume 314, Page 926, Hocking County Recorder's Office. This survey was based upon information obtained from tax maps, deed descriptions, previous surveys, existing monumentation, U. S. 33 Highway plans, an existing public road, and the 100 year flood elevations. The reference bearing for this survey is the South line of Section 14 as North 90 degrees 00 minutes 00 seconds East. Bearings are based upon an assumed meridian and are to denote angles only. All iron pins previously set by this survey are 5/8" by 30" and are capped by a 1-1/4" plastic identification cap stamped LPG-6344. The above described property was surveyed by Larry P. Gerstner, Ohio Registered Surveyor No. 6344, on November 30, 2004, April 6, 2006, and July 13, 2010.



Survey by:

Larry P. Gerstner - Engineering and Surveying
11200 State Route 374, Rockbridge, Ohio 43149 740-385-4260



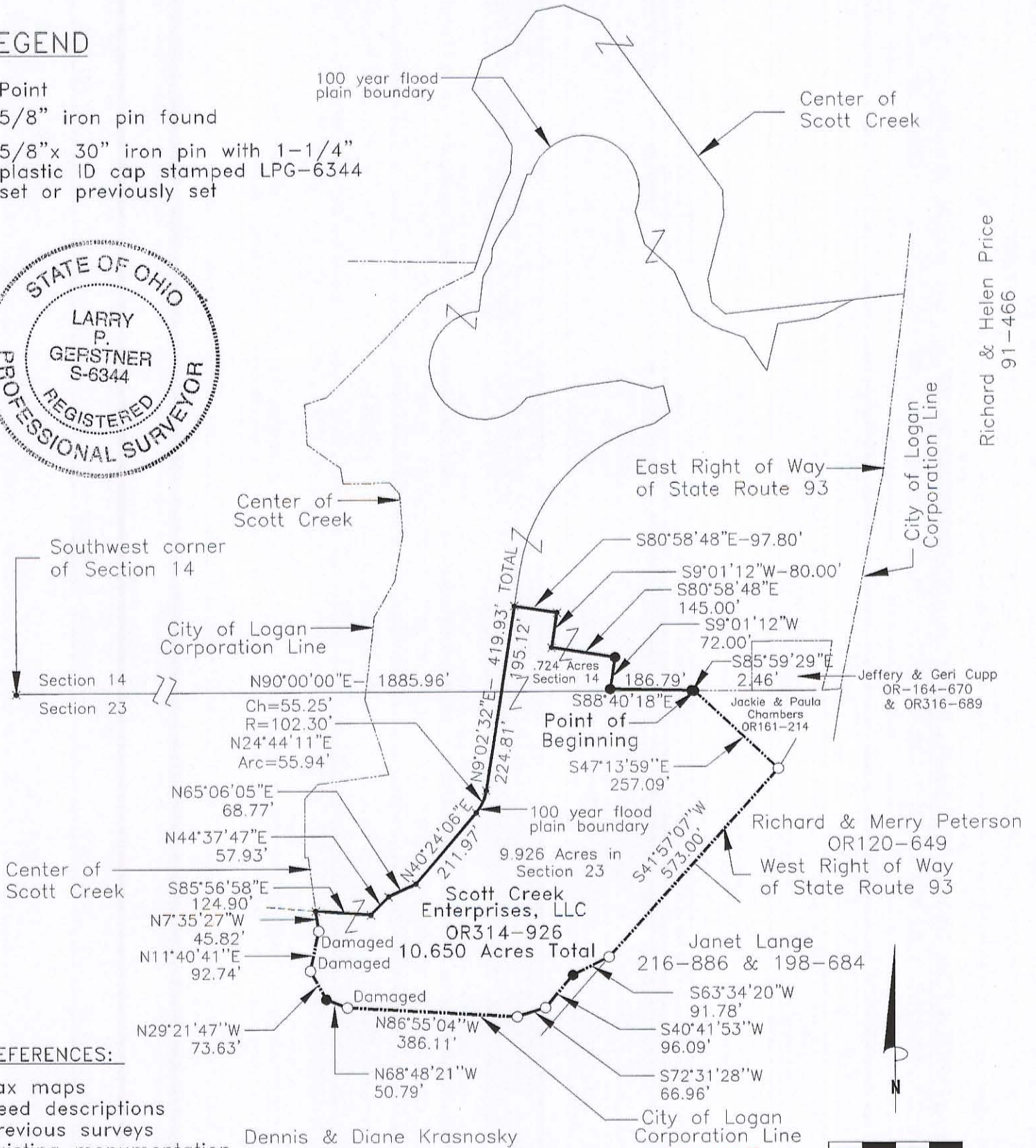
APPROVED MATHEMATICALLY
Hocking County Engineer's Office
By: FN Date: M. 9 D. 8 Y. 2010
CW

PLAT OF A 10.650 ACRE TRACT FOR LOTS 37-66 LOCATED
ABOVE THE 100 YEAR FLOOD PLAIN FOR SCOTT CREEK ESTATES SUBDIVISION

Situated in Falls Township, Hocking County, City of Logan, Ohio; being part of Fractional Lot 1 of Section 14 and part of the Northwest quarter of Section 23, both of Township 14, Range 17; and being part of Scott Creek Estates Subdivision.

LEGEND

- ✱ Point
- 5/8" iron pin found
- 5/8"x 30" iron pin with 1-1/4" plastic ID cap stamped LPG-6344 set or previously set



REFERENCES:

- Tax maps
- Deed descriptions
- Previous surveys
- Existing monumentation
- Existing public road
- U.S. 33 Highway plans
- 100 year flood plain elevations

REFERENCE BEARING:

The South line of Section 14 as North 90 degrees 00 minutes 00 seconds East. Bearings are based upon an assumed meridian and are to denote angles only.

CERTIFICATION:

I hereby certify that an actual survey was made under my supervision of the premises shown hereon on the 30th day of November, 2004, the 6th day of April, 2006, and the 13th day of July, 2010 and that the plat is a correct representation of the premises as described by said survey.

Larry P. Gerstner
Registered Surveyor No. 6344

Survey by: Larry P. Gerstner – Engineering and Surveying
11200 State Route 374, Rockbridge, Ohio 43149
(740) 385-4260

APPROVED MATHEMATICALLY
Hocking County Engineer's Office
By: FN Date: M. 9 D. 8 Y. 2010
CW



SCALE:
1" = 300'

Richard & Helen Price
91-466

**SURVEY DESCRIPTION OF A 10.650 ACRE TRACT FOR LOTS 37-66 LOCATED
ABOVE THE 100 YEAR FLOOD PLAIN FOR SCOTT CREEK ESTATES
SUBDIVISION**

Situated in Falls Township, City of Logan, Hocking County, Ohio; being part of Fractional Lot 1 of Section 14, and part of the Northwest quarter of Section 23, both of Township 14, Range 17; being part of Scott Creek Estates Subdivision; and being more particularly described as follows:

Commencing for reference at a point at the Southwest corner of Section 14; thence with the South line of Section 14 North 90 degrees 00 minutes 00 seconds East a distance of 1885.96 feet to a 5/8" iron pin previously set on the City of Logan Corporation line and being the point of **Beginning** of the tract of land to be described;

thence leaving the South line of Section 14 and going into Section 23 with the City of Logan Corporation line South 47 degrees 13 minutes 59 seconds East a distance of 257.09 feet to a 5/8" iron pin found on the West right of way of State Route 93;

thence with the West right of way of State Route 93 South 41 degrees 57 minutes 07 seconds West a distance of 573.00 feet to a 5/8" iron pin found;

thence leaving the West right of way of State Route 93 South 63 degrees 34 minutes 20 seconds West a distance of 91.78 feet to a 5/8" iron pin previously set;

thence South 40 degrees 41 minutes 53 seconds West a distance of 96.09 feet to a 5/8" iron pin found;

thence South 72 degrees 31 minutes 28 seconds West a distance of 66.96 feet to a 5/8" iron pin found;

thence North 86 degrees 55 minutes 04 seconds West a distance of 386.11 feet to a damaged 5/8" iron pin found;

thence North 68 degrees 48 minutes 21 seconds West a distance of 50.79 feet to a 5/8" iron pin previously set;

thence North 29 degrees 21 minutes 47 seconds West a distance of 73.63 feet to a damaged 5/8" iron pin found;

thence North 11 degrees 40 minutes 41 seconds East a distance of 92.74 feet to a damaged 5/8" iron pin found;

thence North 7 degrees 35 minutes 27 seconds West a distance of 45.82 feet to a point at the 100 year flood plain boundary;

thence leaving the City of Logan Corporation line and with the 100 year flood plain boundary the following six bearings and distances:

- 1) South 85 degrees 56 minutes 58 seconds East a distance of 124.90 feet to a point;
- 2) North 44 degrees 37 minutes 47 seconds East a distance of 57.93 feet to a point;
- 3) North 65 degrees 06 minutes 05 seconds East a distance of 68.77 feet to a point;
- 4) North 40 degrees 24 minutes 06 seconds East a distance of 211.97 feet to a point;
- 5) with a curve to the left having a chord bearing North 24 degrees 44 minutes 11 seconds East at a chord distance of 55.25 feet, an arc distance of 55.94 feet, and a radius of 102.30 feet to a point;

- 6) North 9 degrees 02 minutes 32 seconds East a distance of 419.93 feet to a point and passing into Section 14 at a distance of 224.81 feet;

thence leaving the 100 year flood plain boundary South 80 degrees 58 minutes 48 seconds East a distance of 97.80 feet to a point;

thence South 9 degrees 01 minute 12 seconds West a distance of 80.00 feet to a point;
thence South 80 degrees 58 minutes 48 seconds East a distance of 145.00 feet to a 5/8" iron pin previously set;
thence South 9 degrees 01 minute 12 seconds West a distance of 72.00 feet to a 5/8" iron pin previously set;
thence South 88 degrees 40 minutes 18 seconds East a distance of 186.79 feet to a 5/8" iron pin previously set;
thence South 85 degrees 59 minutes 29 seconds East a distance of 2.46 feet to the point of beginning, containing 10.650 acres more or less, with .724 acres more or less being in Section 14 and 9.926 acres more or less being in Section 23, and subject to the public easement of State Route 93 and any other public or private easements of record.

The above 10.650 acre survey is intended to describe part of the 42.280 acre Scott Creek Estates Subdivision lying above the 100 year flood plain as platted in Plat cabinet 2, Pages 141-143, Hocking County Recorder's Office and belonging to Scott Creek Enterprises, LLC by Official Records Volume 314, Page 926, Hocking County Recorder's Office. This survey was based upon information obtained from tax maps, deed descriptions, previous surveys, existing monumentation, U. S. 33 Highway plans, an existing public road, and the 100 year flood elevations. The reference bearing for this survey is the South line of Section 14 as North 90 degrees 00 minutes 00 seconds East. Bearings are based upon an assumed meridian and are to denote angles only. All iron pins previously set by this survey are 5/8" by 30" and are capped by a 1-1/4" plastic identification cap stamped LPG-6344. The above described property was surveyed by Larry P. Gerstner, Ohio Registered Surveyor No. 6344, on November 30, 2004, April 6, 2006, and July 13, 2010.



Survey by:

Larry P. Gerstner - Engineering and Surveying
11200 State Route 374, Rockbridge, Ohio 43149 740-385-4260



APPROVED MATHEMATICALLY

Hocking County Engineer's Office

By: FN Date: M. 9 D. 8 Y. 2010

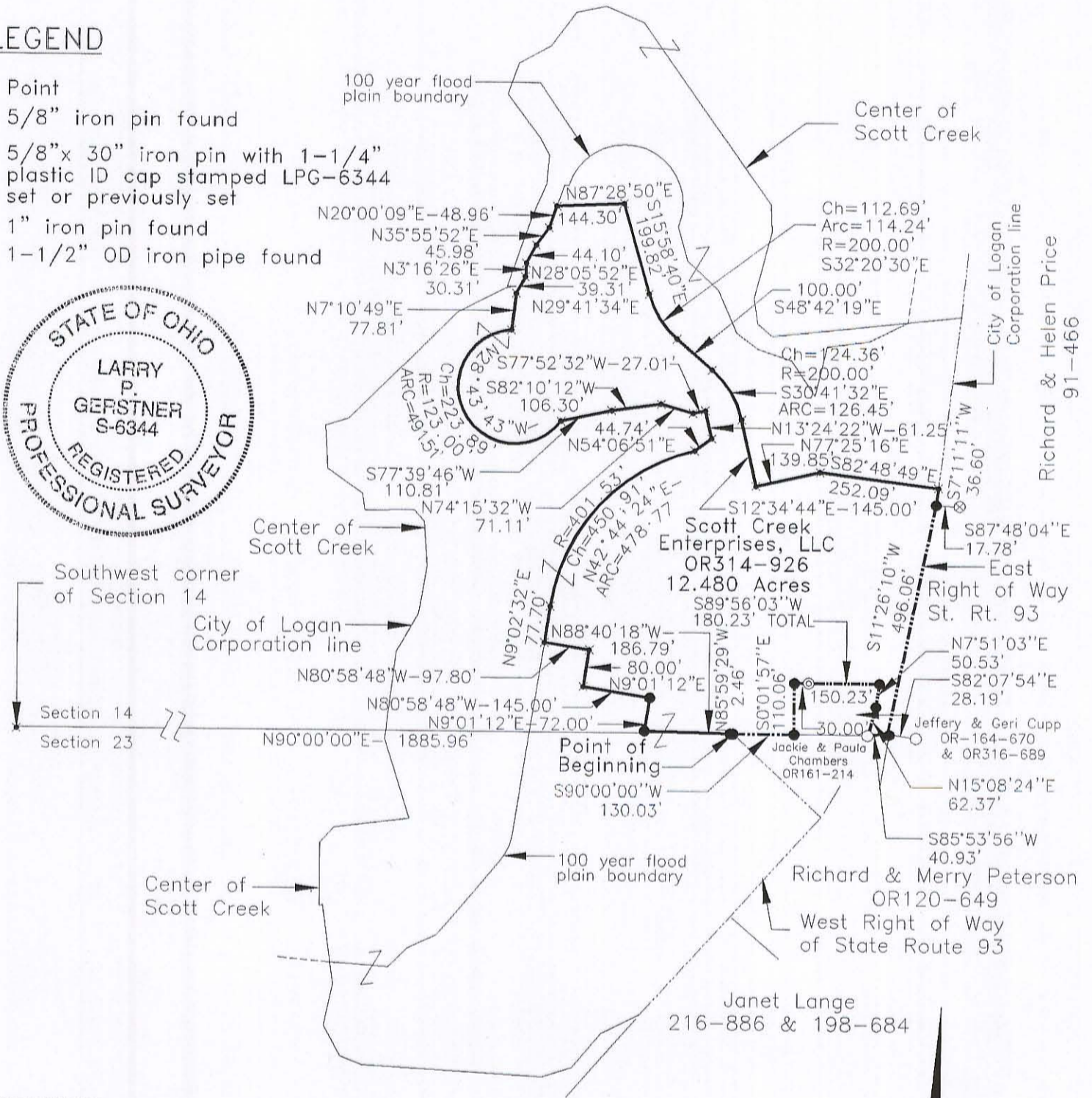
CW

PLAT OF A 12.480 ACRE TRACT FOR LOTS 14-36 AND 67-84 LOCATED ABOVE THE 100 YEAR FLOOD PLAIN FOR SCOTT CREEK ESTATES SUBDIVISION

Situated in Falls Township, City of Logan, Hocking County, Ohio; being part of Fractional Lot 1 of Section 14, Township 14, Range 17; and being part of Scott Creek Estates Subdivision.

LEGEND

- ✱ Point
- 5/8" iron pin found
- 5/8"x 30" iron pin with 1-1/4" plastic ID cap stamped LPG-6344 set or previously set
- ⊙ 1" iron pin found
- ⊙ 1-1/2" OD iron pipe found



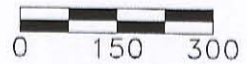
REFERENCES:

- Tax maps
- Deed descriptions
- Previous surveys
- Existing monumentation
- Existing public road
- U.S. 33 Highway plans
- 100 year flood plain elevations

Dennis & Diane Krasnosky
198-445

S72°31'28"W
66.96'

APPROVED MATHEMATICALLY
Hocking County Engineer's Office
By: FN Date: M. 9 D. 8 Y. 2010
CW



SCALE:
1" = 300'

REFERENCE BEARING:

The South line of Section 14 as North 90 degrees 00 minutes 00 seconds East. Bearings are based upon an assumed meridian and are to denote angles only.

CERTIFICATION:

I hereby certify that an actual survey was made under my supervision of the premises shown hereon on the 30th day of November, 2004, the 6th day of April, 2006, and the 13th day of July, 2010 and that the plat is a correct representation of the premises as described by said survey.

Larry P. Gerstner
Registered Surveyor No. 6344

Survey by: Larry P. Gerstner - Engineering and Surveying
11200 State Route 374, Rockbridge, Ohio 43149
(740) 385-4260

**SURVEY DESCRIPTION OF A 12.480 ACRE TRACT FOR
LOTS 14-36 AND 67-84 LOCATED ABOVE
THE 100 YEAR FLOOD PLAIN FOR SCOTT CREEK ESTATES SUBDIVISION**

Situated in Falls Township, City of Logan, Hocking County, Ohio; being part of Fractional Lot 1 of Section 14, Township 14, Range 17; being part of Scott Creek Estates Subdivision; and being more particularly described as follows:

Commencing for reference at a point at the Southwest corner of Section 14; thence with the South line of Section 14 North 90 degrees 00 minutes 00 seconds East a distance of 1885.96 feet to a 5/8" iron pin previously set and being the point of **Beginning** of the tract of land to be described;

thence leaving the South line of Section 14 North 85 degrees 59 minutes 29 seconds West a distance of 2.46 feet to a 5/8" iron pin previously set;

thence North 88 degrees 40 minutes 18 seconds West a distance of 186.79 feet to a 5/8" iron pin previously set;

thence North 9 degrees 01 minute 12 seconds East a distance of 72.00 feet to a 5/8" iron pin previously set;

thence North 80 degrees 58 minutes 48 seconds West a distance of 145.00 feet to a point;

thence North 9 degrees 01 minute 12 seconds East a distance of 80.00 feet to a point;

thence North 80 degrees 58 minutes 48 seconds West a distance of 97.80 feet to a point at the 100 year flood plain boundary;

thence with the 100 year flood plain boundary the following fifteen bearings and distances:

1) North 9 degrees 02 minutes 32 seconds East a distance of 77.70 feet to a point;

2) with a curve to the right having a chord bearing North 42 degrees 44 minutes 24 seconds East at a chord distance of 450.91 feet, an arc distance of 478.77 feet, and a radius of 401.53 feet to a point;

3) North 54 degrees 06 minutes 51 seconds East a distance of 44.74 feet to a point;

4) North 13 degrees 24 minutes 22 seconds West a distance of 61.25 feet to a point;

5) South 77 degrees 52 minutes 32 seconds West a distance of 27.01 feet to a point;

6) North 74 degrees 15 minutes 32 seconds West a distance of 71.11 feet to a point;

7) South 82 degrees 10 minutes 12 seconds West a distance of 106.30 feet to a point;

8) South 77 degrees 39 minutes 46 seconds West a distance of 110.81 feet to a point;

9) with a curve to the right having a chord bearing North 28 degrees 43 minutes 43 seconds West at a chord distance of 223.89 feet, an arc distance of 491.51 feet, and a radius of 123.00 feet to a point;

10) North 7 degrees 10 minutes 49 seconds East a distance of 77.81 feet to a point;

11) North 29 degrees 41 minutes 34 seconds East a distance of 39.31 feet to a point;

12) North 3 degrees 16 minutes 26 seconds East a distance of 30.31 feet to a point;

13) North 28 degrees 05 minutes 52 seconds East a distance of 44.10 feet to a point;

14) North 35 degrees 55 minutes 52 seconds East a distance of 45.98 feet to a point;

15) North 20 degrees 00 minutes 09 seconds East a distance of 48.96 feet to a point;

thence leaving the 100 year flood plain boundary North 87 degrees 28 minutes 50 seconds East a distance of 144.30 feet to a point;

thence South 15 degrees 58 minutes 40 seconds East a distance of 199.82 feet to a point;

thence with a curve to the left having a chord bearing South 32 degrees 20 minutes 30 seconds East at a chord distance of 112.69 feet, an arc distance of 114.24 feet, and a radius of 200.00

feet to a point;

thence South 48 degrees 42 minutes 19 seconds East a distance of 100.00 feet to a point;

thence with a curve to the right having a chord bearing South 30 degrees 41 minutes 32 seconds East at a chord distance of 124.36 feet, an arc distance of 126.45 feet, and a radius of 200.00 feet to a point;

thence South 12 degrees 34 minutes 44 seconds East a distance of 145.00 feet to a point;

thence North 77 degrees 25 minutes 16 seconds East a distance of 139.85 feet to a point;

thence South 82 degrees 48 minutes 49 seconds East a distance of 252.09 feet to a point on the East right of way of State Route 93 and the City of Logan Corporation line;

thence with the City of Logan Corporation line the following eight bearings and distances:

1) with the East right of way of State Route 93 South 7 degrees 11 minutes 11 seconds West a distance of 36.60 feet to a 5/8" iron pin previously set from which a 1-1/4" OD iron pipe found bears South 87 degrees 48 minutes 04 seconds East at a distance of 17.78 feet;

2) continuing with the East right of way of State Route 93 South 11 degrees 26 minutes 10 seconds West a distance of 496.06 feet to a 5/8" iron pin previously set, from which a 5/8" iron pin found bears South 82 degrees 07 minutes 54 seconds East at a distance of 28.19 feet;

3) crossing State Route 93 South 85 degrees 53 minutes 56 seconds West a distance of 40.93 feet to a 5/8" iron pin found on the South line of Section 14;

4) leaving the South line of Section 14 North 15 degrees 08 minutes 24 seconds East a distance of 62.37 feet to a 5/8" iron pin previously set;

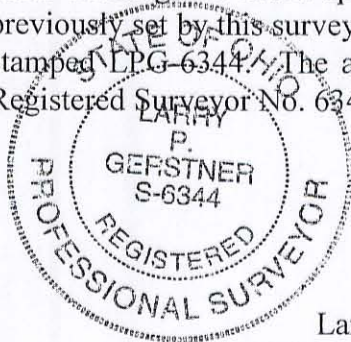
5) North 7 degrees 51 minutes 03 seconds East a distance of 50.53 feet to a 5/8" iron pin previously set;

6) South 89 degrees 56 minutes 03 seconds West a distance of 180.23 feet to a 5/8" iron pin previously set and passing a 1" iron pin found at a distance of 150.23 feet;

7) South 0 degrees 01 minute 57 seconds East a distance of 110.06 feet to a 5/8" iron pin previously set on the South line of Section 14;

8) with the South line of Section 14 South 90 degrees 00 minutes 00 seconds West a distance of 130.03 feet to the point of beginning, containing 12.480 acres more or less, and subject to the public easement of State Route 93 and any other public or private easements of record.

The above 12.480 acre survey is intended to describe part of the 42.280 acre Scott Creek Estates Subdivision lying above the 100 year flood plain as platted in Plat cabinet 2, Pages 141-143, Hocking County Recorder's Office and belonging to Scott Creek Enterprises, LLC by Official Records Volume 314, Page 926, Hocking County Recorder's Office. This survey was based upon information obtained from tax maps, deed descriptions, previous surveys, existing monumentation, U. S. 33 Highway plans, an existing public road, and the 100 year flood elevations. The reference bearing for this survey is the South line of Section 14 as North 90 degrees 00 minutes 00 seconds East. Bearings are based upon an assumed meridian and are to denote angles only. All iron pins previously set by this survey are 5/8" by 30" and are capped by a 1-1/4" plastic identification cap stamped LPG-6344. The above described property was surveyed by Larry P. Gerstner, Ohio Registered Surveyor No. 6344, on November 30, 2004, April 6, 2006, and July 13, 2010.



APPROVED MATHEMATICALLY
Hocking County Engineer's Office
By: FN Date: M. 9 D. 8 Y. 2010
CW

A handwritten signature in black ink that reads "Larry P. Gerstner".

Survey by:

Larry P. Gerstner - Engineering and Surveying

11200 State Route 374, Rockbridge, Ohio 43149 740-385-4260