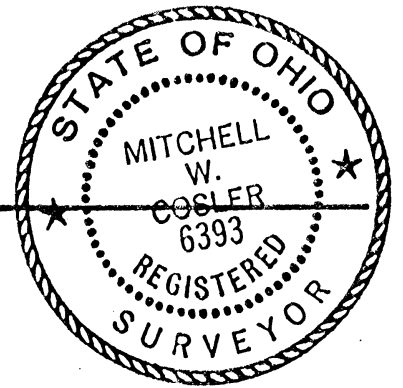


RECEIVED IN HOCKING COUNTY  
at 10:05 O'Clock AM  
RECORDED 1983  
RECORD LHM VOL. 1 PAGE 1026

MAR 18 1982

R9-7100-86 (4-4-73) GPO 802-755



Donna R. Leach  
RECORDER - HOCKING COUNTY  
STATE OF OHIO

CERTIFIED LAND CORNER RESTORATION

County of Hocking } ss.

I, Mitchell W. Cosler, do hereby certify that on the 3rd day of March, 1982, I found evidence of the Lot 8 North Division corner of Section 29 Township 13 North, Range 15 West, Levi Davis Survey, as described hereon; and that from this evidence I established a new monument and accessories as described hereon to perpetuate the location of this corner:

Description of original monument and accessories and subsequent restorations:

Original monument and accessories as established by Levi Davis Survey (Hocking County) in 1870, are unknown. A plat of the Levi Davis Survey is filed at the Hocking County Recorder's Office, Book A-4, Page 422.

Description of corner evidence found:

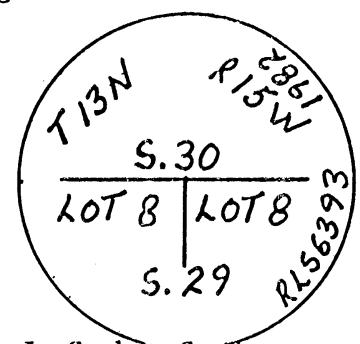
A two inch iron car axle was found in 1982 and adjacent to the axle was a wood post set by the U.S. Forest Service when the land was acquired by the government in 1942. Old fence lines run west and south from corner area.

Description of monument and accessories I established to perpetuate the original location of this corner:

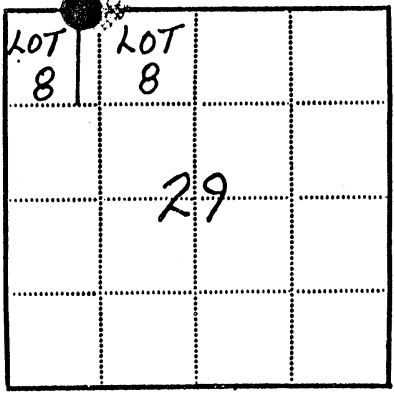
A 2 1/2" x 30" aluminum pipe filled with concrete with an aluminum cap was set for the corner monument. The cap was stamped as shown below. Corner point was determined by single proportionate measurements from section corner 29, 30, 35 and 36 and section corner 23, 24, 29 and 30. Established the following bearing trees:

Yellow Poplar	Buckeye
10"	4"
N30E	S68W
16.2 Ft.	22.4 Ft.

The corner is 60 feet south of a small stream.



WARD 30



● - Corner monument restored  
□ -

Resident witnesses..... J. Graham Snyder

Dated at Dayton Ohio, this 21st day of July, 1982

Signature Mitchell W. Cosler Title Registered Land Surveyor  
(County Surveyor, Registered Land Surveyor, or other duly authorized official)

Surveyors Registration No. S-6369

Office of..... County of.....

I hereby certify that the within instrument was filed in this office for record on the..... day of..... 19....., and was filed in Book No..... Page No..... of County Records.

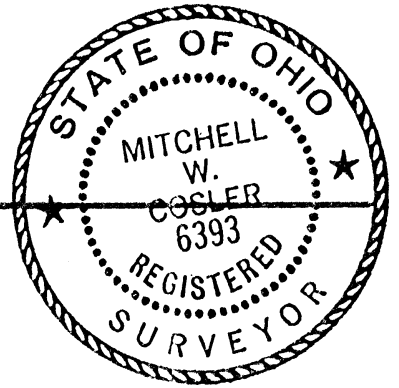
Signature..... Title.....

Township 13 North, Range 15 West, Section 29, Index No. E-5-6, Page No.....

RECEIVED IN HOCKING COUNTY, OHIO at 10:03 O'CLOCK A M RECORDED 19 RECORD 64M VOL 1 PAGE 1024

MAR 18 1983

R9-7100-86 (4-4-73) GPO 802-755



Donna R. Leach

CERTIFIED LAND CORNER RESTORATION

RECORDER - HOCKING COUNTY LOGAN, OHIO 43138 State of Ohio

County of Hocking

ss.

I, Mitchell W. Cosler, do hereby certify that on the 3rd day of March, 1982, I found evidence of the 1/4 Quarter Section corner of Sections 29 and 30 Township 13 North, Range 15 West, Levi Davis, Ohio River Survey, as described hereon; and that from this evidence I established a new monument and accessories as described hereon to perpetuate the original location of this corner:

Description of original monument and accessories and subsequent restorations:

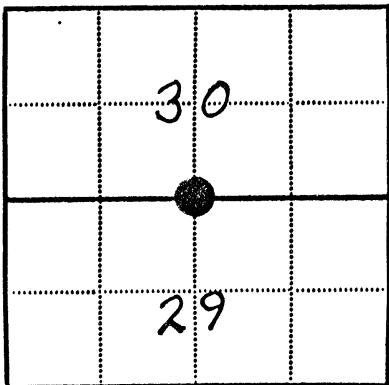
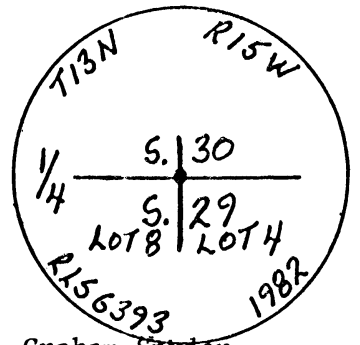
Original monument and accessories, as established by Levi Davis Survey (Hocking County) in 1870, are unknown. Plats of the Levi Davis Survey are filed at the Hocking County Recorder's Office, Book A-4, Pages 422 and 423.

Description of corner evidence found:

No corner evidence was found. The corner point is in a reclaimed strip mined area and any corner evidence was likely destroyed during the mining activities.

Description of monument and accessories I established to perpetuate the original location of this corner:

A 2 1/2" x 30" aluminum pipe filled with concrete with an aluminum cap was set for the corner monument. The cap was stamped as shown below. Corner point was determined by single proportionate measurements from section corner 23, 24, 29 and 30 to section corner 29, 30, 35 and 36. No bearing trees or objects were available for use within 100 feet of the corner.



● - Corner monument restored □ -

Resident witnesses J. Graham Snyder

Dated at Dayton Ohio, this 21st day of July, 1982.

Signature Mitchell W. Cosler Title Registered Land Surveyor (County Surveyor, Registered Land Surveyor, or other duly authorized official)

Surveyors Registration No. S-6393

Office of County of

I hereby certify that the within instrument was filed in this office for record on the day of 19, and was filed in Book No. Page No. of County Records.

Signature Title

Township 13 North, Range 15 West, Section 29 & 30, Index No. E-7, Page No.

RECEIVED IN HOCKING COUNTY, OHIO  
9:34 O'CLOCK A M  
CORDED  
CORO. 67/100 1 PAGE 1017

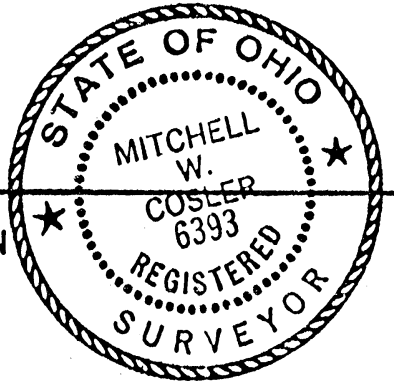
50671

WARD 23, 24  
29 + 30

MAR 18 1982

*Donna R. Lynch*  
RECORDER - HOCKING COUNTY  
LOGAN, OHIO 43138

R9-7100-86 (4-4-73) GPO 802-755



CERTIFIED LAND CORNER RESTORATION

State of Ohio }  
County of Hocking } ss.

I, Mitchell W. Cosler, do hereby certify that on the 3rd day of March, 1982, I found evidence of the Section corner of Sections 23, 24, 29 & 30 Township 13 North, Range 15 West, Levi Davis, ~~Ohio River~~ Survey, as described hereon; and that from this evidence I established a new monument and accessories as described hereon to perpetuate the original location of this corner:

Description of original monument and accessories and subsequent restorations:

The original monument and accessories, as established by the Levi Davis Survey (Hocking County in 1870) are unknown. Plats of the Levi Davis Surveys are filed at the Hocking County Recorder's Office, Book A-4, Pages 422 and 423.

Subsequent Restorations -

1. Sunday Creek Coal Company, Hocking County. Book 1, Page 57, 1923, Stone Monument, 5 bearing trees, and reference pin 153.6 feet west of monument.
2. Numerous U.S. Forest Service acquisition and CCC notes referencing the corner from 1936 and 1937. Stone monument with a wood post beside it and bearing trees were called for. All notes are on file at District Ranger's Office, Athens, Ohio.

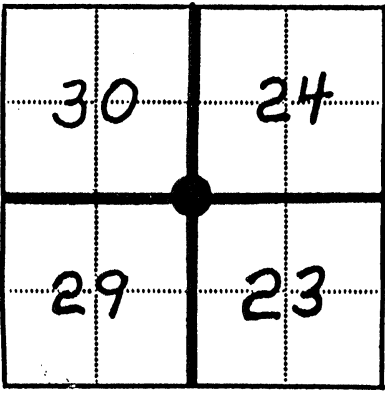
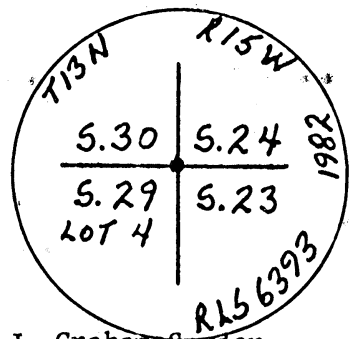
Description of corner evidence found:

The corner position was found to be buried under stripmined talus slope. Recovered the iron pin set by Sunday Creek Coal Company in 1923. Measured distances to the roads north and west and to the creek east are consistent with the USFS notes from 1936 and 1937.

Description of monument and accessories I established to perpetuate the original location of this corner:

A 2 1/2" dia. x 30" concrete filled aluminum pipe with an aluminum cap stamped as shown below was set for the corner monument. The corner position was determined by using the record distance from the iron pin set by Sunday Creek Coal Company in 1923 and the bearing being consistent with the south line of Section 30. The following scribed bearing trees were established:

Sweet Gum	Black Locust	Soft Maple	Tulip Poplar
5"	6"	5"	5"
S80°W	N14°E	S19°E	S85°E
19.9 Feet	9.7 Feet	8.4 Feet	17 Feet



● - Corner monument restored  
□ -

Resident witnesses..... J. Graham Snyder

Dated at Dayton Ohio, this 21st day of July, 1982

Signature *Mitchell W. Cosler* Title Registered Land Surveyor  
(County Surveyor, Registered Land Surveyor, or other duly authorized official)

Surveyors Registration No. S-6393

Office of..... County of.....  
I hereby certify that the within instrument was filed in this office for record on the..... day of..... 19....., and was filed in Book No..... Page No..... of County Records.

Signature..... Title.....

Township 13 North, Range 15 West, Section 23, 24, 29 & 30, Index No. E-9, Page No.....

RECEIVED IN HOCK COUNTY,  
at 10:01 O'CLOCK A M  
RECORDED 19  
RECORD VOL. 1 PAGE 1022

MAR 18 1983

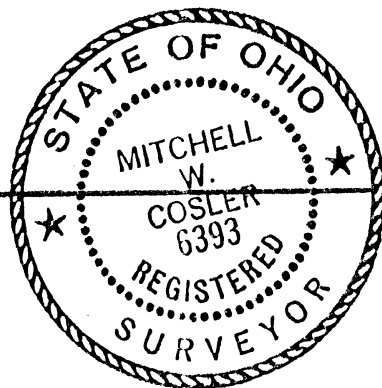
R9-7100-86 (4-4-73)

GPO 802-755

*Donna B. Leach*

RECORDER - HOCKING COUNTY  
LOGAN, OHIO 43138

CERTIFIED LAND CORNER RESTORATION



State of Ohio }  
County of Hocking } ss.

I, Mitchell W. Cosler, do hereby certify that on the 3rd day of March, 1982, I found evidence of the Section corner of Sections 29, 30, 35 and 36 Township 13 North, Range 15 West, Levi Davis, Ohio River Survey, as described hereon; and that from this evidence I established a new monument and accessories as described hereon to perpetuate the original location of this corner:

Description of original monument and accessories and subsequent restorations:

Original monument and accessories, as established by Levi Davis Survey (Hocking County) in 1869 and 1870, are as follows: Monument set - unknown.

Accessories -  
Hickory Hickory  
20" 20"  
S71W N71E  
4 Links 25 Links

Plats of the Levi Davis Surveys are filed in the Hocking County Recorder's Office, Book A-4, Pages 422, 423, 427 and 428.

Subsequent restoration is recorded in Book 1, Pages 274 and 277 Hocking County Surveys, filed at Hocking County Engineer's Office. The 1913 Survey records a stone corner monument and bearing tree Elm, 15", N-W, 16.5 feet.

Description of corner evidence found:

In 1937 the U.S. Forest Service recovered a stone monument, and established the following BT's -  
Elm Sassafras Hickory  
14" 6" 6"  
N21W S83W N25E  
21 Links 43 Links 18 Links

In 1982 the U.S. Forest Service again recovered the corner stone and also the Elm and Hickory bearing trees. The Elm is dead and laying on the ground and is believed to be the Elm called for in 1913.

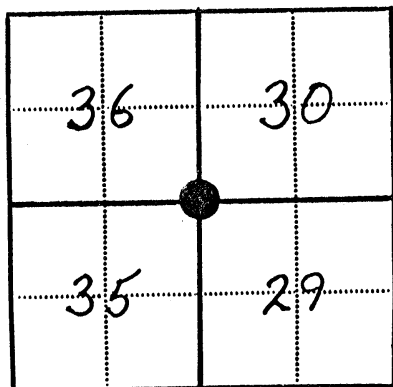
Corner stone is 2" 8" on top with definite +, and 2" above ground level. There are faint stones remains three feet W-SW of stone.

Description of monument and accessories I established to perpetuate the original location of this corner:

The stone corner monument was left in place and the following bearing trees were established:

Shagbark	Hickory	Sugar Maple	Sugar Maple (Unscribed)
Hickory			
3"	5"	4"	2"
N79E	N30E	N27W	N87W
6.1 Ft.	11.6 Ft.	12.3 Ft.	8.5 Ft.

This corner is eight feet west of a stripmined highwall (20 feet high).



● - Corner monument restored  
□ -

Resident witnesses..... J. Graham Snyder

Dated at Dayton, Ohio, this 21st day of July, 1982.

Signature *Mitchell W. Cosler* Title Registered Land Surveyor  
(County Surveyor, Registered Land Surveyor, or other duly authorized official)

Surveyors Registration No. S-6393

Office of..... County of.....  
I hereby certify that the within instrument was filed in this office for record on the..... day of..... 19....., and was filed in Book No..... Page No..... of County Records.

Signature..... Title.....

Township 13 North, Range 15 West, Section 29, 30, 35 & 36, Index No. E-5, Page No.....