

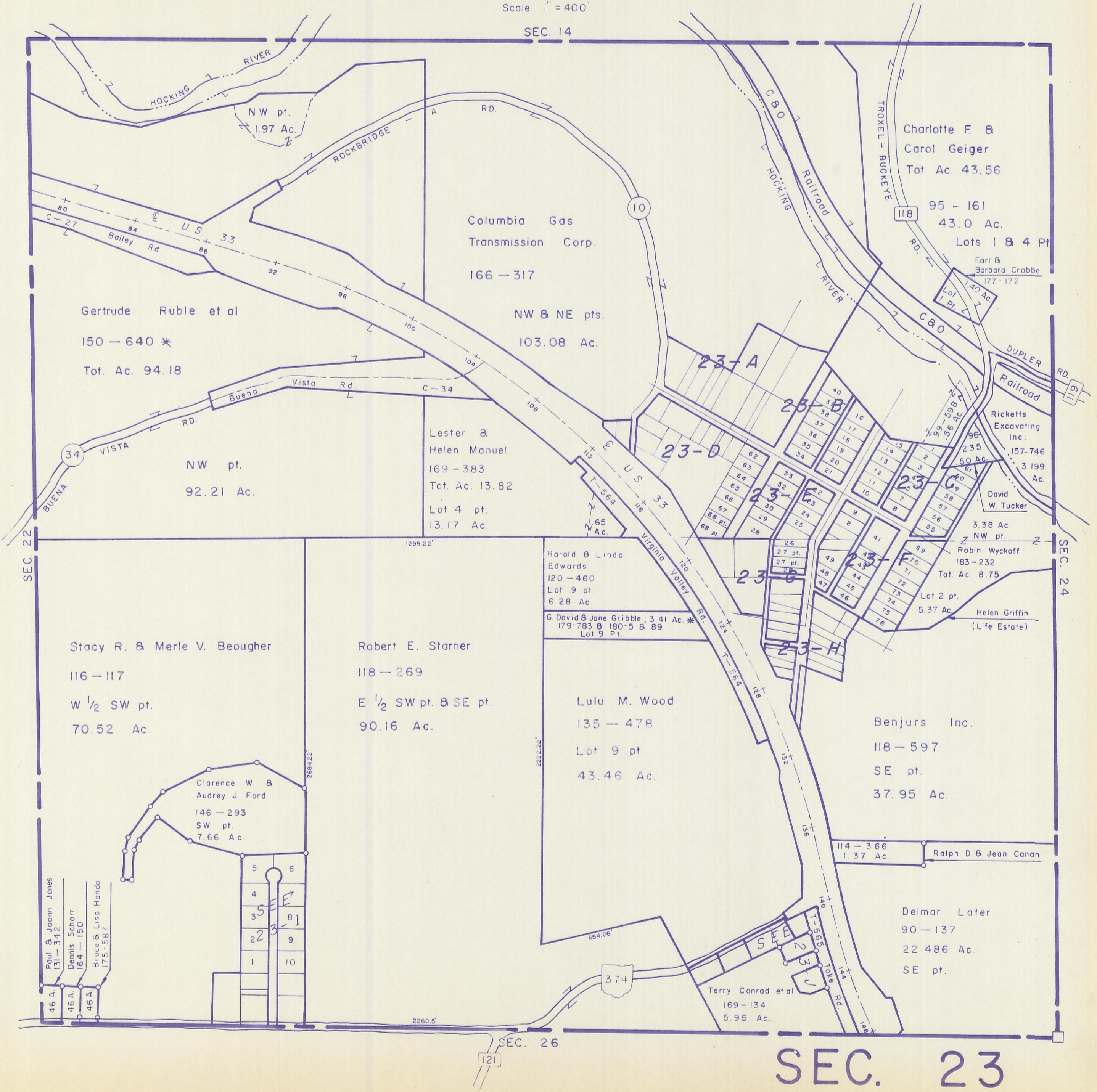
HOCKING COUNTY

GOOD HOPE

SEC. 23 T 13 R 18

Scale 1" = 400'

SEC. 14



Charlotte F. & Carol Geiger
Tot. Ac. 43.56

95 - 161
43.0 Ac.
Lots 1 & 4 Pt

Earl & Barbara Crabbe
177 - 172
Lot 1 Pt.

Columbia Gas
Transmission Corp.
166 - 317

Gertrude Ruble et al
150 - 640 *
Tot. Ac. 94.18

NW & NE pts.
103.08 Ac.

NW pt.
92.21 Ac.

Lester & Helen Manuel
169 - 383
Tot. Ac. 13.82
Lot 4 pt.
13.17 Ac.

Harold & Linda Edwards
120 - 460
Lot 9 pt.
6.28 Ac.

G. David & Jane Gribble, 3.41 Ac. *
179-783 & 180-5 & 89
Lot 9 Pt.

Stacy R. & Merle V. Beougher
116 - 117
W 1/2 SW pt.
70.52 Ac.

Robert E. Starner
118 - 269
E 1/2 SW pt. & SE pt.
90.16 Ac.

Lulu M. Wood
135 - 478
Lot 9 pt.
43.46 Ac.

Benjurs Inc.
118 - 597
SE pt.
37.95 Ac.

114 - 366
1.37 Ac.
Ralph D. & Jean Canan

Delmar Later
90 - 137
22.486 Ac.
SE pt.

Terry Conrad et al
169 - 134
5.95 Ac.

SEC. 23

SEC. 26

121