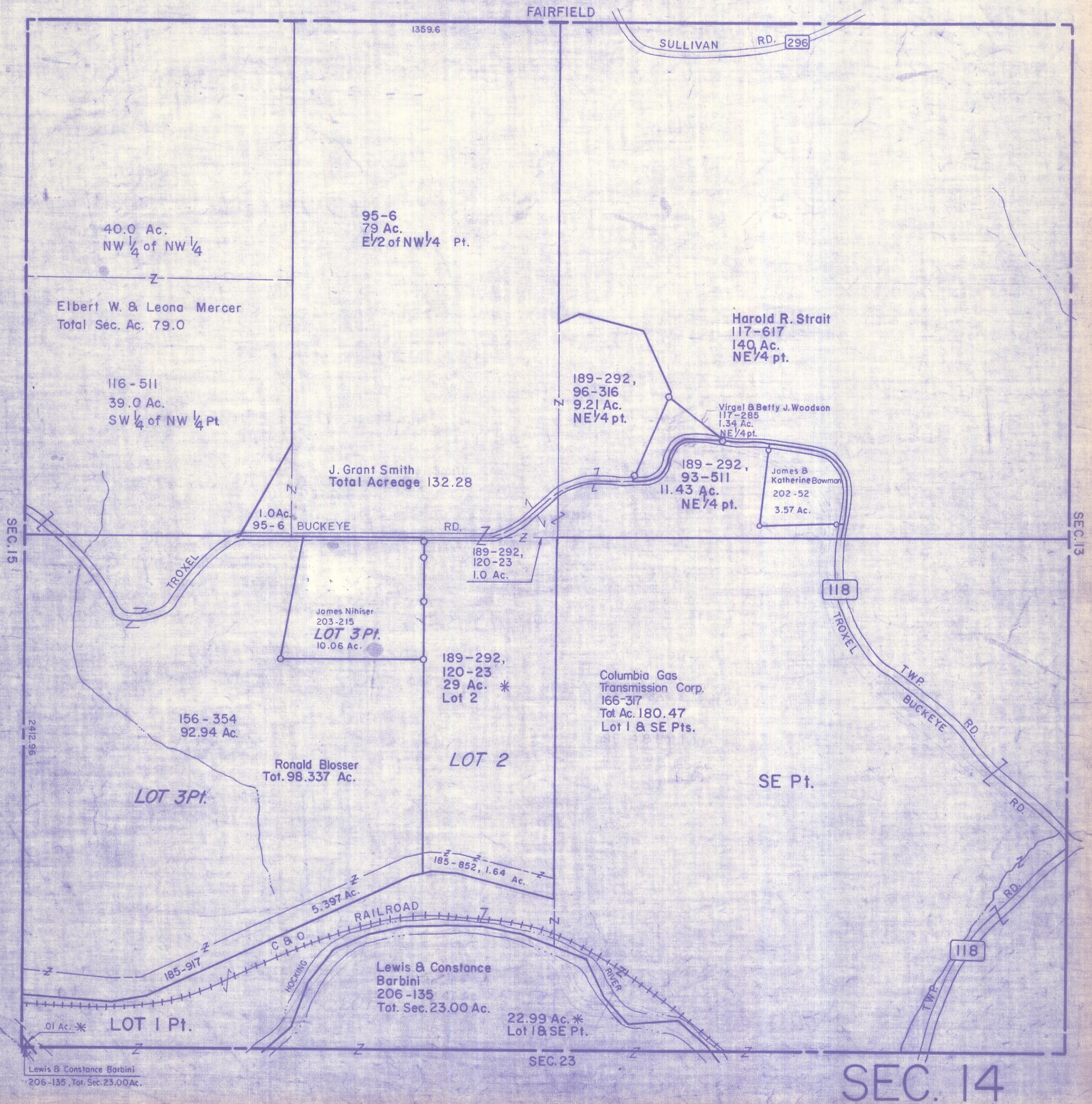


HOCKING COUNTY

Sec 14 T 13 R 18

GOOD HOPE TWP.

Scale: 1" = 400'



40.0 Ac.
NW 1/4 of NW 1/4

95-6
79 Ac.
E 1/2 of NW 1/4 Pt.

Elbert W. & Leona Mercer
Total Sec. Ac. 79.0

116-511
39.0 Ac.
SW 1/4 of NW 1/4 Pt.

J. Grant Smith
Total Acreage 132.28

Harold R. Strait
117-617
140 Ac.
NE 1/4 pt.

189-292,
96-316
9.21 Ac.
NE 1/4 pt.

Virgel & Betty J. Woodson
117-285
1.34 Ac.
NE 1/4 pt.

189-292,
93-511
11.43 Ac.
NE 1/4 pt.

James &
Katherine Bowman
202-52
3.57 Ac.

1.0 Ac.
95-6

BUCKEYE RD.

189-292,
120-23
1.0 Ac.

James Nihiser
203-215
LOT 3 Pt.
10.06 Ac.

189-292,
120-23
29 Ac. *
Lot 2

Columbia Gas
Transmission Corp.
166-317
Tot Ac. 180.47
Lot 1 & SE Pts.

156-354
92.94 Ac.

Ronald Blosser
Tot. 98.337 Ac.

LOT 2

SE Pt.

LOT 3 Pt.

185-852, 1.64 Ac.

5.397 Ac.

RAILROAD

Lewis & Constance
Barbini
206-135
Tot. Sec. 23.00 Ac.

22.99 Ac. *
Lot 1 & SE Pt.

.01 Ac. *
LOT 1 Pt.

Lewis & Constance Barbini
206-135, Tot. Sec. 23.00 Ac.

SEC. 23

SEC. 14