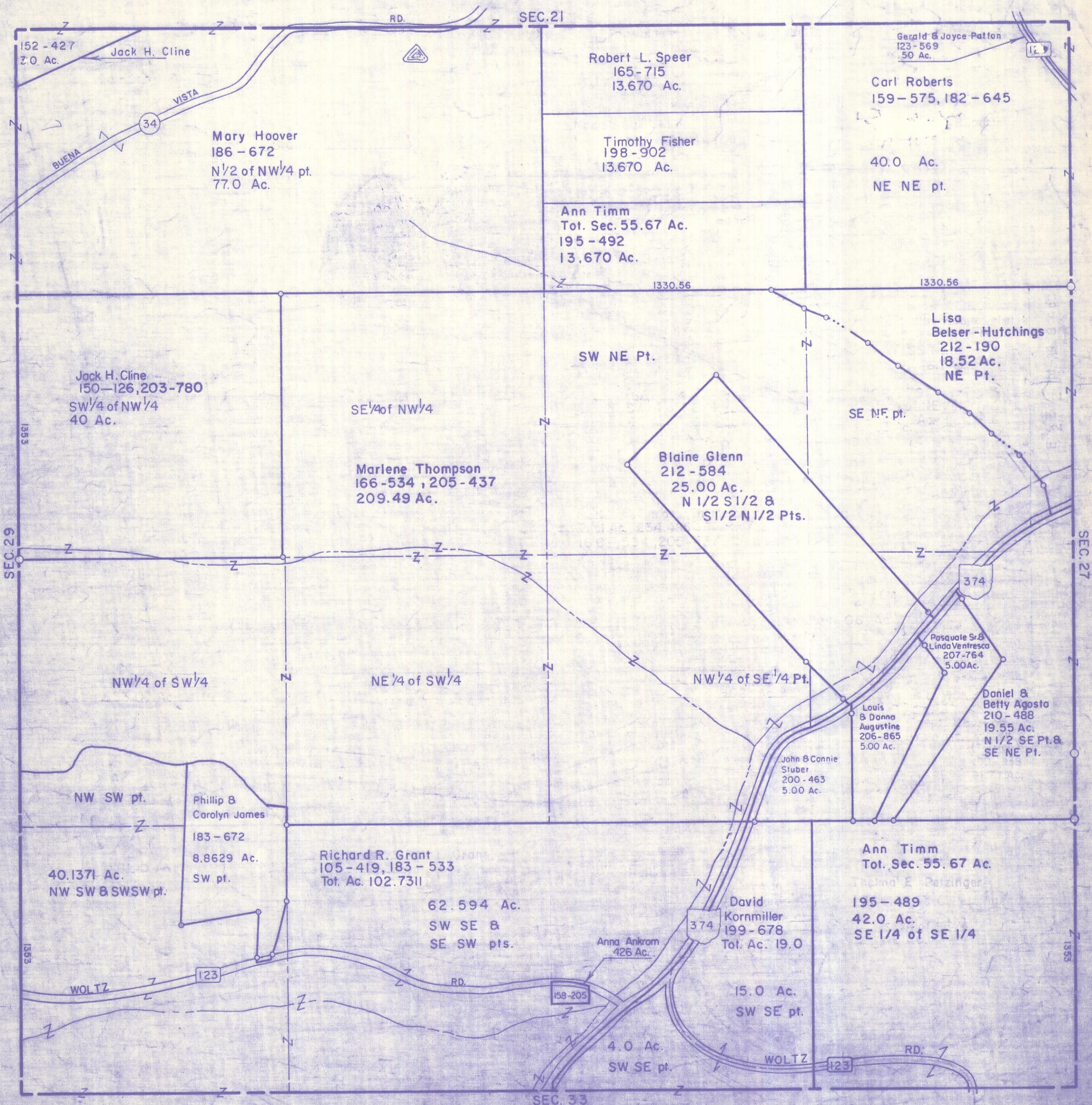


HOCKING COUNTY

Sec. 28 T13 R18
GOOD HOPE TWP

Scale: 1" = 400'



SEC. 28

152-427
2.0 Ac.
Jack H. Cline

Mary Hoover
186-672
N 1/2 of NW 1/4 pt.
77.0 Ac.

Robert L. Speer
165-715
13.670 Ac.

Timothy Fisher
198-902
13.670 Ac.

Ann Timm
Tot. Sec. 55.67 Ac.
195-492
13.670 Ac.

Gerald & Joyce Patton
123-569
50 Ac.

Carl Roberts
159-575, 182-645

40.0 Ac.
NE NE pt.

Jack H. Cline
150-126, 203-780
SW 1/4 of NW 1/4
40 Ac.

SE 1/4 of NW 1/4

Marlene Thompson
166-534, 205-437
209.49 Ac.

SW NE Pt.

Lisa Belser - Hutchings
212-190
18.52 Ac.
NE Pt.

Blaine Glenn
212-584
25.00 Ac.
N 1/2 S 1/2 &
S 1/2 N 1/2 Pts.

SE NE pt.

NW 1/4 of SW 1/4

NE 1/4 of SW 1/4

NW 1/4 of SE 1/4 Pt.

NW SW pt.

Phillip & Carolyn James
183-672
8.8629 Ac.
SW pt.

40.1371 Ac.
NW SW & SWSW pt.

Richard R. Grant
105-419, 183-533
Tot. Ac. 102.7311

62.594 Ac.
SW SE &
SE SW pts.

Anna Ankrom
426 Ac.

David Kornmiller
199-678
Tot. Ac. 19.0

Ann Timm
Tot. Sec. 55.67 Ac.

195-489
42.0 Ac.
SE 1/4 of SE 1/4

15.0 Ac.
SW SE pt.

4.0 Ac.
SW SE pt.

SEC. 28