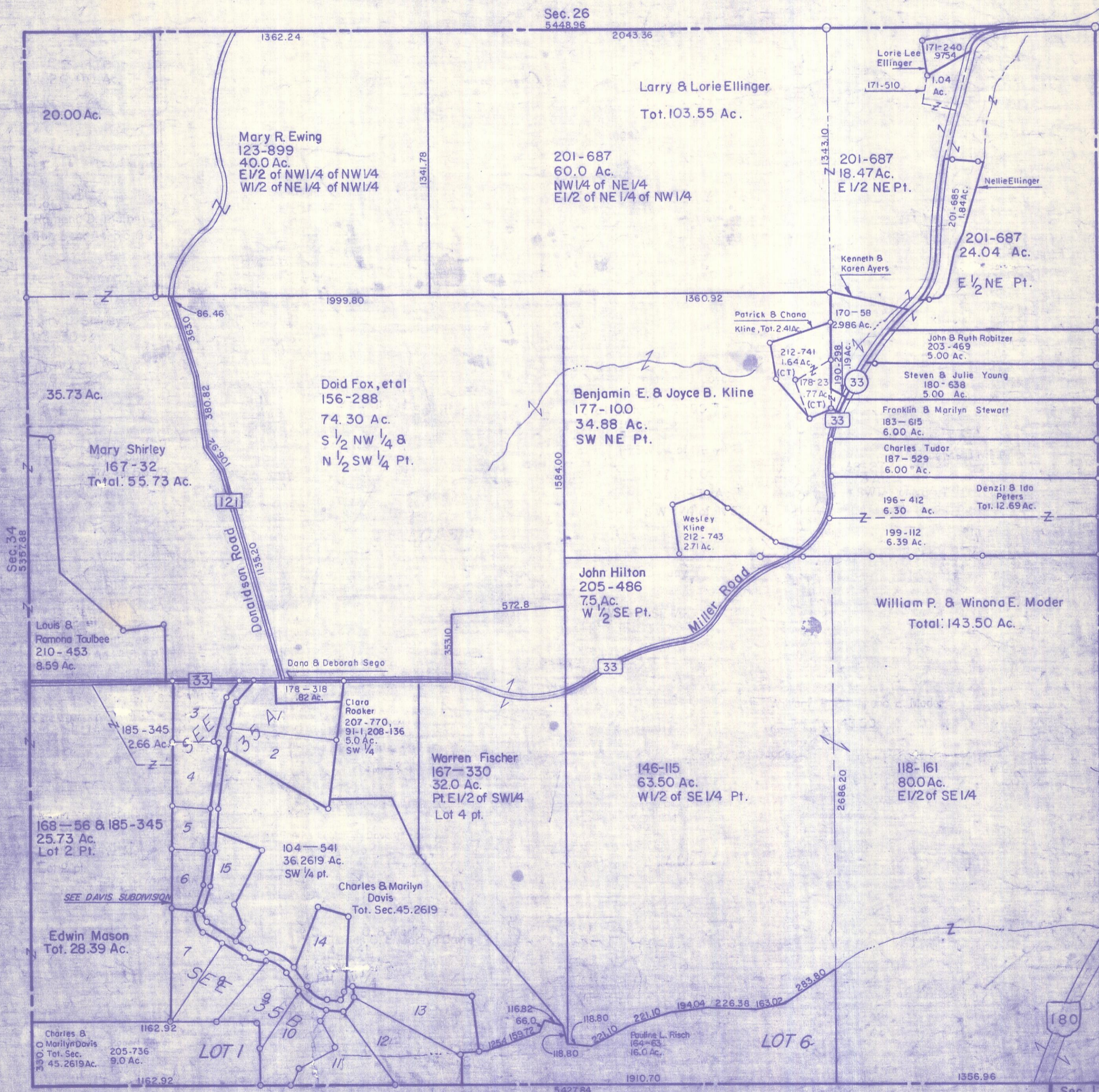


HOCKING COUNTY

Sec. 35 T13 R18

GOOD HOPE TWP.

Scale=1"=400'



33

124

Sec. 26
5448.96

Larry & Lorie Ellinger
Tot. 103.55 Ac.

201-687
60.0 Ac.
NW 1/4 of NE 1/4
E 1/2 of NE 1/4 of NW 1/4

201-687
18.47 Ac.
E 1/2 NE Pt.

201-687
24.04 Ac.
E 1/2 NE Pt.

Doid Fox, et al
156-288
74.30 Ac.
S 1/2 NW 1/4 &
N 1/2 SW 1/4 Pt.

Benjamin E. & Joyce B. Kline
177-100
34.88 Ac.
SW NE Pt.

John & Ruth Robitzer
203-469
5.00 Ac.

Steven & Julie Young
180-638
5.00 Ac.

Franklin & Marilyn Stewart
183-615
6.00 Ac.

Charles Tudor
187-529
6.00 Ac.

Denzil & Ida Peters
Tot. 12.69 Ac.

196-412
6.30 Ac.

199-112
6.39 Ac.

John Hilton
205-486
7.5 Ac.
W 1/2 SE Pt.

William P. & Winona E. Moder
Total: 143.50 Ac.

20.00 Ac.

Mary R. Ewing
123-899
40.0 Ac.
E 1/2 of NW 1/4 of NW 1/4
W 1/2 of NE 1/4 of NW 1/4

35.73 Ac.

Mary Shirley
167-32
Total: 55.73 Ac.

Louis & Ramona Taulbee
210-453
8.59 Ac.

Dano & Deborah Sego

Clara Rooker
207-770,
91-1, 208-136
5.0 Ac.
SW 1/4

Warren Fischer
167-330
32.0 Ac.
Pt. E 1/2 of SW 1/4
Lot 4 pt.

146-115
63.50 Ac.
W 1/2 of SE 1/4 Pt.

118-161
80.0 Ac.
E 1/2 of SE 1/4

168-56 & 185-345
25.73 Ac.
Lot 2 Pt.

104-541
36.2619 Ac.
SW 1/4 pt.

Charles & Marilyn Davis
Tot. Sec. 45.2619

Edwin Mason
Tot. 28.39 Ac.

Charles & Marilyn Davis
Tot. Sec. 45.2619 Ac.
205-736
9.0 Ac.

LOT 1

LOT 6

Laurel Twp. Sec. 2

Sec. 35

Sec. 1