

HOCKING COUNTY

Sec. 2 T12 R 18

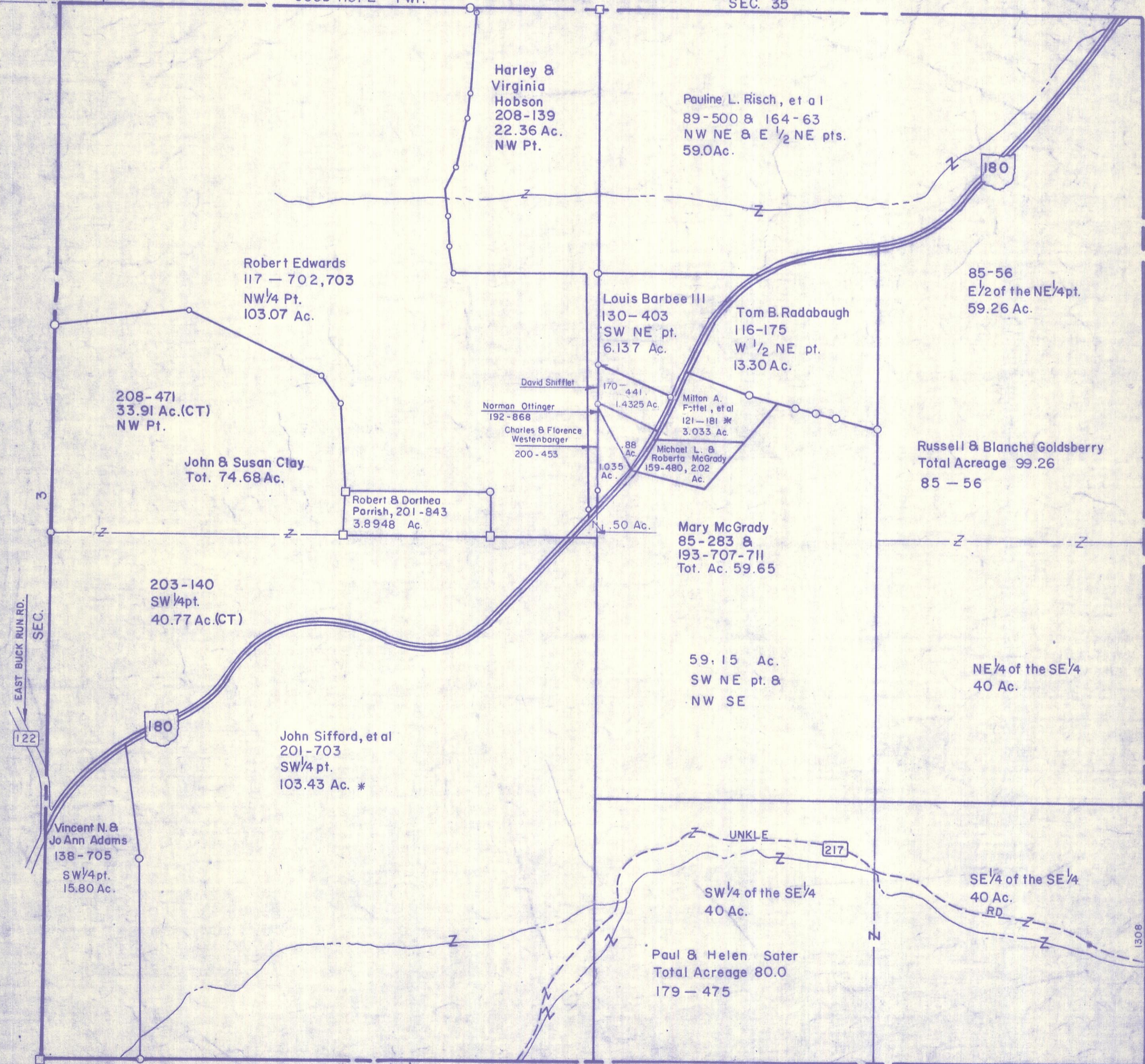
LAUREL TWP.

Scale 1"=400'

GOOD HOPE
SEC. 34

GOOD HOPE TWP.

SEC. 35



Harley &
Virginia
Hobson
208-139
22.36 Ac.
NW Pt.

Pauline L. Risch, et al
89-500 & 164-63
NW NE & E 1/2 NE pts.
59.0Ac.

Robert Edwards
117 - 702,703
NW 1/4 Pt.
103.07 Ac.

Louis Barbee III
130-403
SW NE pt.
6.137 Ac.

Tom B. Radabaugh
116-175
W 1/2 NE pt.
13.30 Ac.

85-56
E 1/2 of the NE 1/4 pt.
59.26 Ac.

208-471
33.91 Ac.(CT)
NW Pt.

John & Susan Clay
Tot. 74.68 Ac.

David Shifflet
170-441
1.4325 Ac.
Norman Ottinger
192-868
Charles & Florence
Westenbarger
200-453

Milton A.
Fittel, et al
121-181 *
3.033 Ac.

Russell & Blanche Goldsberry
Total Acreage 99.26
85-56

Robert & Dorthea
Parrish, 201-843
3.8948 Ac.

Mary McGrady
85-283 &
193-707-711
Tot. Ac. 59.65

203-140
SW 1/4 pt.
40.77 Ac.(CT)

59.15 Ac.
SW NE pt. &
NW SE

NE 1/4 of the SE 1/4
40 Ac.

John Sifford, et al
201-703
SW 1/4 pt.
103.43 Ac. *

SW 1/4 of the SE 1/4
40 Ac.

SE 1/4 of the SE 1/4
40 Ac.
RD

Vincent N. &
Jo Ann Adams
138-705
SW 1/4 pt.
15.80 Ac.

Paul & Helen Sater
Total Acreage 80.0
179-475

SEC. 2