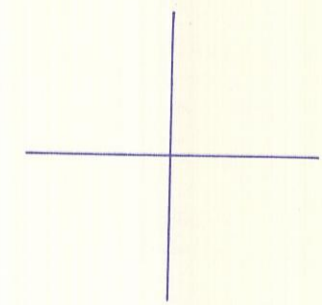


HOCKING COUNTY

WARD TWP.

SEC. 20 T 13 R 15

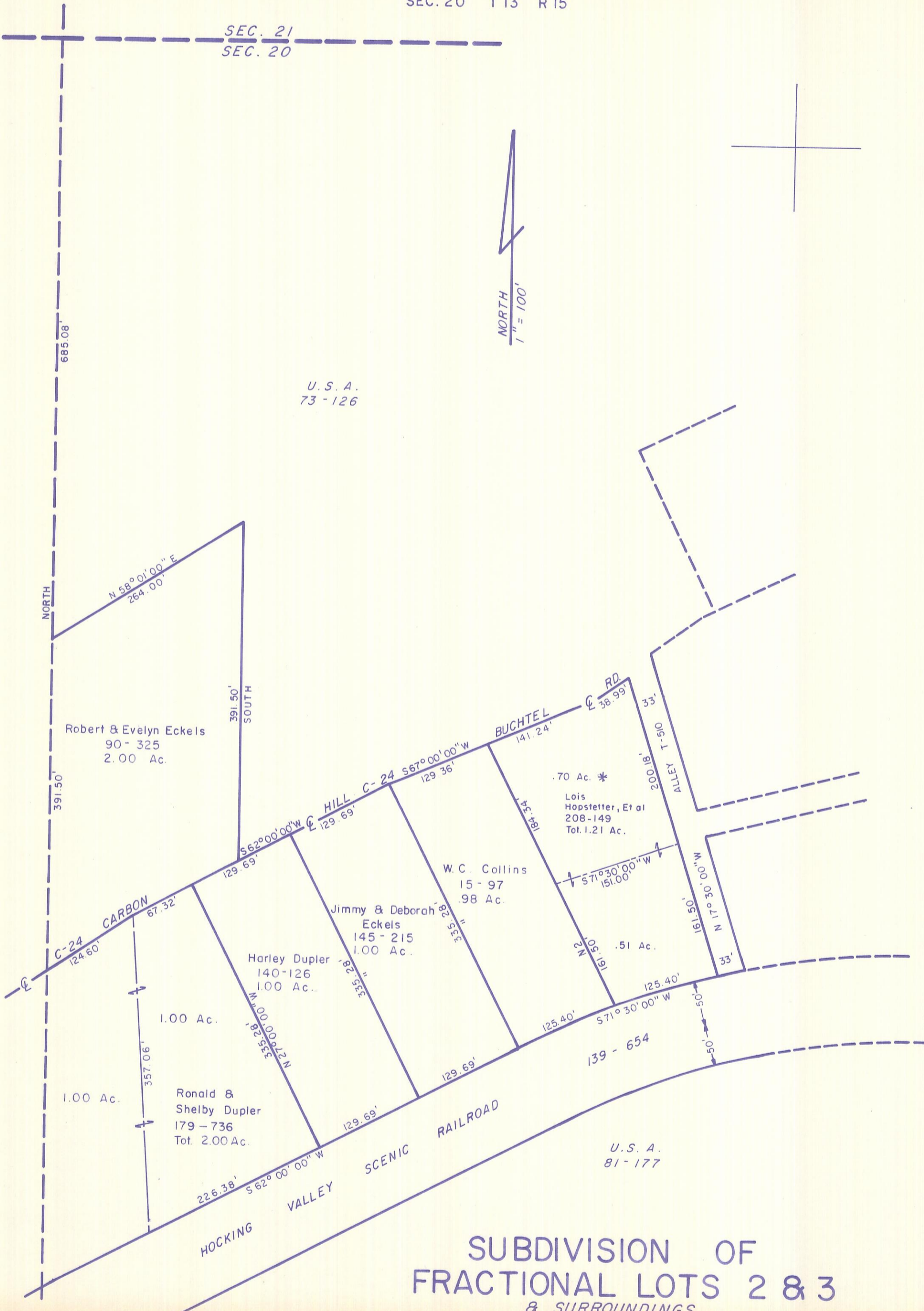
SEC. 21  
SEC. 20



NORTH  
1" = 100'

U. S. A.  
73 - 126

Oliver & Robert  
Salter  
127-413 & 104-170



Robert & Evelyn Eckels  
90 - 325  
2.00 Ac.

.70 Ac. \*

Lois  
Hopstetter, Et al  
208-149  
Tot. 1.21 Ac.

W. C. Collins  
15 - 97  
.98 Ac.

Jimmy & Deborah  
Eckels  
145 - 215  
1.00 Ac.

Harley Dupler  
140-126  
1.00 Ac.

1.00 Ac.

Ronald &  
Shelby Dupler  
179 - 736  
Tot. 2.00 Ac.

SEE 20-E

SUBDIVISION OF  
FRACTIONAL LOTS 2 & 3  
& SURROUNDINGS

20-D