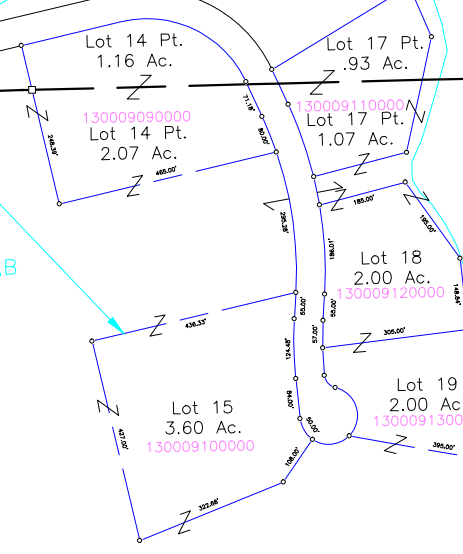


MADISON27 PE34TT
MADISON26 PE35TT

FAIRFIELD COUNTY T13N R19W
T13N R19W

MADISON26 PE35TT
MADISON25 PE36TT

SNORTIN RIDGE SUB.
- Lots 14-19 (Hocking County)
- fka Plat Book G, Pgs. 5, 6, 7
- nka Plat Cab. 1, pgs. 139 A,B, 140 A,B



Cindy Henderly
OR446-12
Tot. 79.00 Ac.
130006490000

21.04 Ac.
NW Pt.

OR186-754
4.5 Ac.
Snortin Ridge
Company, LLC
Tot. 73.80 Ac.

OR186-754
26.82 Ac.
Frac. 1, 2 Pts.
130006510000

Snortin Ridge
Subdivision
OR186-754
148-374
36.81 Ac.
"Reserve Area"
130006380000

Snortin Ridge
Subdivision
OR186-754
70.625 Ac.
"Reserve Area"
130006690000

Darrin & Shelby Davis
OR262-315
OR74-26
80.16 Ac.
E 1/2 NE
130006130000

40.00 Ac.
NW NW

54.35 Ac.
NW Pt.

Steve Tanenbaum
OR500-534
14.27 Ac.
NE Pt.

Douglas & Patricia
McGee
OR550-281
17.33 Ac.
NE Pt.
130006390100 130006390000

Snortin Ridge
Company, LLC
Tot. 73.80 Ac.

OR186-750
42.48 Ac.
130006400000

Snortin Ridge
Company, LLC
OR186-750
134.02 Ac.
W 1/2 Pt.
130006680000

30.00 Ac.
SW NW Pt.

John Wisse
OR450-185
Tot. 75.39 Ac.
130006410000

17.00 Ac.
SW NE Pt., NW SE Pt.

Laurel Ridge
Adventures, LLC
OR484-736 *
Tot. 37.00 Ac.
130006430000

OR186-750
42.48 Ac.
130006400000

Larry & Diane Baird
OR479-749
20.256 Ac.
NE SE Pt.
130006500100

Larry & Diane Baird
OR479-749
28.226 Ac.
W 1/2 SW Pt.
130006740100

OR550-664
28.1391 Ac. (CT)
130006440301

OR331-837
22.4219 Ac.
130006440700

OR331-837
31.7404 Ac.
130006440000

David Thomas
OR212-900
Tot. 18.55 Ac.
130006450000
16.02 Ac.

Benny &
Patricia Nichols
OR85-490
12.17 Ac.
NE SE Pt.
130006500000

Morgan Chapel U.M.
Church Trustees
Tot. 1.50 Ac. (CT)
130006746400

ROK
Properties, LLC
OR485-495
4.4299 Ac.
NE SE Pt.
130006500200

ROK
Properties, LLC
OR485-495
7.5701 Ac.
130006740200

Virginia Corder
OR5-521,
OR228-203
12.00 Ac.
130006740300

Teresa & James Azbell
OR367-849
12.00 Ac.
SW Pt.
130006670000

Deighton D. & Stephanie Stump
OR406-397
14.33 Ac.
SE SW Pt.
130006790400

I Jr. & Dennis Guy
OR16-116,
OR75-878
10.00 Ac.
1/2 SE
130006200000

Michael & Linda
Nelson
Tot. 75.6667 Ac.

KTTS Real Estate
Investment Company, LLC
Tot. 58.8264 Ac.

OR331-837
31.7404 Ac.
130006440000

Eagle Wings I, LLC
OR413-956
14.0653 Ac.
130006440201

Dorothy & Roy Young
OR466-341, 217-574
21.19 Ac.
SE Pt.
130006520000

Robert &
Doris Wolfe
211-369
2.00 Ac.
130006540000

Michael Justice
OR175-662
1.82 Ac. (CT)
130006740000

John McKinley
OR276-198
8.54 Ac.
130006740600

Jack D. &
Wretha Malone
138-676 *
Tot. 6.66 Ac.
130006740000

Christopher & Kim
Stump, et al.
OR378-166
13.64 Ac.
SE SW Pt.
130006790000

Ethelyn Corroll
OR8-307,
(T.O.D., OR419-59)
2.99 Ac.
130006200100

Carlene Corroll
OR103-194, 207-533,
OR52-604
62.76 Ac.
S 1/2 SE Pt.
130006200000

OR546-431
25.2568 Ac.
130006440400

OR546-440
22.2708 Ac.
130006440601

Thomas & Teresa Houle
OR464-470
20.000 Ac.
130006440500

Anastasia M. Christopher
OR514-361
22.5029 Ac.

Ronald Glick Jr.
OR5-248, 250
130006470000

Jeremy & Lisa
Dennis
Tot. Sec. 35TT
7.845 Ac.
130006480900

Edgar M. & Donna B. Stump,
Co. Trustees
OR372-136
13.00 Ac.
SE SE Pt.
130006530000

David & Mary Azbell
OR301-899
4.19 Ac.
130000270200

John McKinley
OR276-198
8.54 Ac.
130006740600

Jack D. &
Wretha Malone
138-676 *
Tot. 6.66 Ac.
130006740000

Deighton Jr. &
OR258-45,
130006790000

Randy & Brenda
Azbell
OR9-917
4.49 Ac.
130000480000

OR331-816
17.01 Ac.
Frac. 8 Pt.

Timothy & Karen Jubaach
OR331-827, 22153 Ac.
130006440000

OR474-151
0.339 Ac.
130006440000

Robbin & Jerry Cassell
197-523, 2.81 Ac.
130006460000

OR533-756
3.233 Ac.
130006460000

OR255-776
4.612 Ac.
130006480900

David & Sandra
Seifert
OR321-99
6.01 Ac.
130000270000

David & Mary Azbell
OR301-899, 1.82 Ac.
130000270200

John McKinley
OR276-198
8.54 Ac.
130006740600

Jack D. &
Wretha Malone
138-676 *
Tot. 6.66 Ac.
130006740000

Deighton Jr. &
OR258-45,
130006790000

OR331-816
17.01 Ac.
Frac. 8 Pt.

OR546-431
25.2568 Ac.
130006440400

OR546-440
22.2708 Ac.
130006440601

OR474-151
0.339 Ac.
130006440000

OR533-756
3.233 Ac.
130006460000

OR255-776
4.612 Ac.
130006480900

OR301-899
4.19 Ac.
130000270200

OR301-899, 1.82 Ac.
130000270200

OR321-604
22.79 Ac.
NW NW Pt.
130000150000

OR172-354, 2.00 Ac.
130006670000

OR287-938
26.31 Ac.
130000040400

OR331-816
17.01 Ac.
Frac. 8 Pt.

OR546-431
25.2568 Ac.
130006440400

OR546-440
22.2708 Ac.
130006440601

OR474-151
0.339 Ac.
130006440000

OR533-756
3.233 Ac.
130006460000

OR255-776
4.612 Ac.
130006480900

OR301-899
4.19 Ac.
130000270200

OR301-899, 1.82 Ac.
130000270200

OR321-604
22.79 Ac.
NW NW Pt.
130000150000

OR172-354, 2.00 Ac.
130006670000

OR287-938
26.31 Ac.
130000040400