

PICKAWAY COUNTY

ROSS COUNTY

T11N R20W

SALT CREEK36

PE31BT

T12N R19W

T11N R19W

PE31BT

PE32BT

SC06TT

SC05TT

T10N R20W

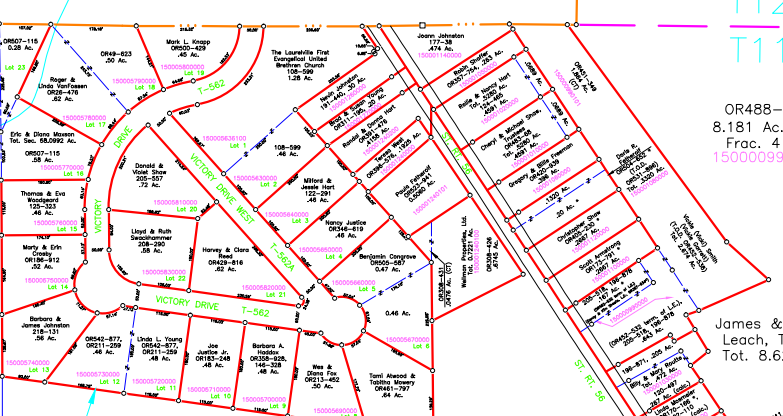
COLERAIN01

SC06TT

NE NW

OR507-115
3.24 Ac.
NW NW Pt.
150001230000

OR507-115
16 Ac.
NW NW Pt.
150001230000



OR488-508
8.181 Ac. (CT)
Frac. 4 Pt.
150001150000

Frac.3 Pt.
(CT)
150001150000

199-141
38.81 Ac.
Frac.1 Pt.
150001280000

Scott & Kathy Ely
Tot. 44.75 Ac.
150001280000

Harold & Kathryn West
199-815
46.698 Ac.
NE NW, N 1/2 SE NW Pt.
150000880000

Stacy Rodgers
OR295-619
15.11 Ac.
Frac. 6 Pt.
150001210300

Fred Mahoney, Jr.
OR343-683,
OR159-658
1.00 Ac.
(CT)
150001210200

Eric & Diana Maxson
Tot. Sec. 58.0992 Ac.
OR487-918
OR485-190,
OR180-354
12.647 Ac. (CT)
150001250300

Laurelville Church of God
140-761
12.68 Ac.
Frac.4 Pt.
150001156000

David & Judy Unger
Tot. 4.12 Ac.
OR220-514
(CT)
.10 Ac.
150001290000

76.09 Ac.
W 1/2 NW,
Frac. 4 Pts.
150000920000

Louis Anderson
OR428-500
T.O.D. 11-97
Frac. 3.38 Ac. Pt.
150001250000

Delbert & Vickie Anderson
221-569, 3.91 Ac.
150001210100

Edward Pritchard
OR499-676
OR415-51
4.783 Ac.
150001250100

Eric & Diana Maxson
Tot. Sec. 58.0992 Ac.
OR487-918
OR485-190,
OR180-354
.789 Ac. (CT)
150001250300

Ramona Hattiger
OR110-774
1.84 Ac.
150001150300

Eric & Diana Maxson
Tot. Sec. 58.0992 Ac.
OR202-956
5.876 Ac.
150001150000

Eric & Diana Maxson
Tot. Sec. 58.0992 Ac.
OR220-514
(CT)
.10 Ac.
150001290000

199-138
5.94 Ac.
150001280100

158-732
5.40 Ac.
150001226000

Joyce Thurston & Paul Tatman
OR284-287
Frac. 5 Pt.
150001250000

Trina Eveland
OR406-749
2.45 Ac.
150001250400

Eric & Diana Maxson
Tot. Sec. 58.0992 Ac.
OR487-918
OR485-190,
OR180-354
1.84 Ac.
150001150300

Eric & Diana Maxson
Tot. Sec. 58.0992 Ac.
OR202-956
5.876 Ac.
150001150000

Ned & Larua Hinton
OR84-318
106.00 Ac.
Frac. 2
150000980000

199-138
5.94 Ac.
150001280100

Larry Azbell,
OR488-508
Tot. 291.8
150001150000

The Incorporated Village of Laurelville
123-167
15.00 Ac.
Frac. 6 Pt.
150001226000

Trina Eveland
OR316-299
5.59 Ac.
Frac. 5 Pt.
150001250700

Brian Nungester
OR442-565
1.84 Ac.
150001250800

Ramon Maxson
OR78-957
61.59 Ac.
Frac.4 Pt.
150001150100

Nancy Maxson
OR84-312
89.55 *
Frac.3 Pt. (CT)
150001150000

Ned & Larua Hinton
OR84-318
106.00 Ac.
Frac. 2
150000980000

Dalton & Mary DeLong
195-469
57.13 Ac.
Frac.1 Pt.
150001280200

*
84.40 Ac.
E 1/2, W 1/2
150000900000

Jerold & Victoria Graham
Tot. 53.42 Ac.
150001220000

Joyce Thurston & Paul Tatman
OR284-287
Frac. 5 Pt.
150001250000

Rosco Boggs & Joy Davis
OR456-893
1.8366 Ac.
150001250300

Ramon Maxson
OR78-957
61.59 Ac.
Frac.4 Pt.
150001150100

Nancy Maxson
OR84-312
89.55 *
Frac.3 Pt. (CT)
150001150000

Ned & Larua Hinton
OR84-318
106.00 Ac.
Frac. 2
150000980000

Dalton & Mary DeLong
195-469
57.13 Ac.
Frac.1 Pt.
150001280200

46.94 Ac.
Frac. 4 Pt.
150000920000

84.40 Ac.
W 1/2 Pt.
150000910000

158-732
48.02 Ac.
Frac.6 Pt.
150001220000

Rick Mercer
OR104-919
31.31 Ac.
Frac. 5 Pt.
150001250200

Eric & Diana Maxson
Tot. Sec. 58.0992 Ac.
OR487-918
OR485-190,
OR180-354
1.84 Ac.
150001150300

Eric & Diana Maxson
Tot. Sec. 58.0992 Ac.
OR202-956
5.876 Ac.
150001150000

Eric & Diana Maxson
Tot. Sec. 58.0992 Ac.
OR220-514
(CT)
.10 Ac.
150001290000

Dalton & Mary DeLong
195-469
57.13 Ac.
Frac.1 Pt.
150001280200

46.94 Ac.
Frac. 4 Pt.
150000920000

84.40 Ac.
W 1/2 Pt.
150000910000

Shane Angle Th
OR150-
Tot. 3.2

COLERAIN01
COLERAIN12

SC06TT
SC07

Darren & Elizabeth Speirs
OR105-895
12.18 Ac.
N 1/2 Pt.
150001350400

Eric & Diana Maxson
Tot. Sec. 58.0992 Ac.
OR487-918
OR485-190,
OR180-354
1.84 Ac.
150001150300

Larry & Kathy Ramsay
215-546
30.02 Ac.
NE Pt.
150001340000

Joshua Cordell
OR508-713
Tot. 20.90 Ac.
150001330100

18.898 Ac.
NE Pt.
(CT)

Larry