

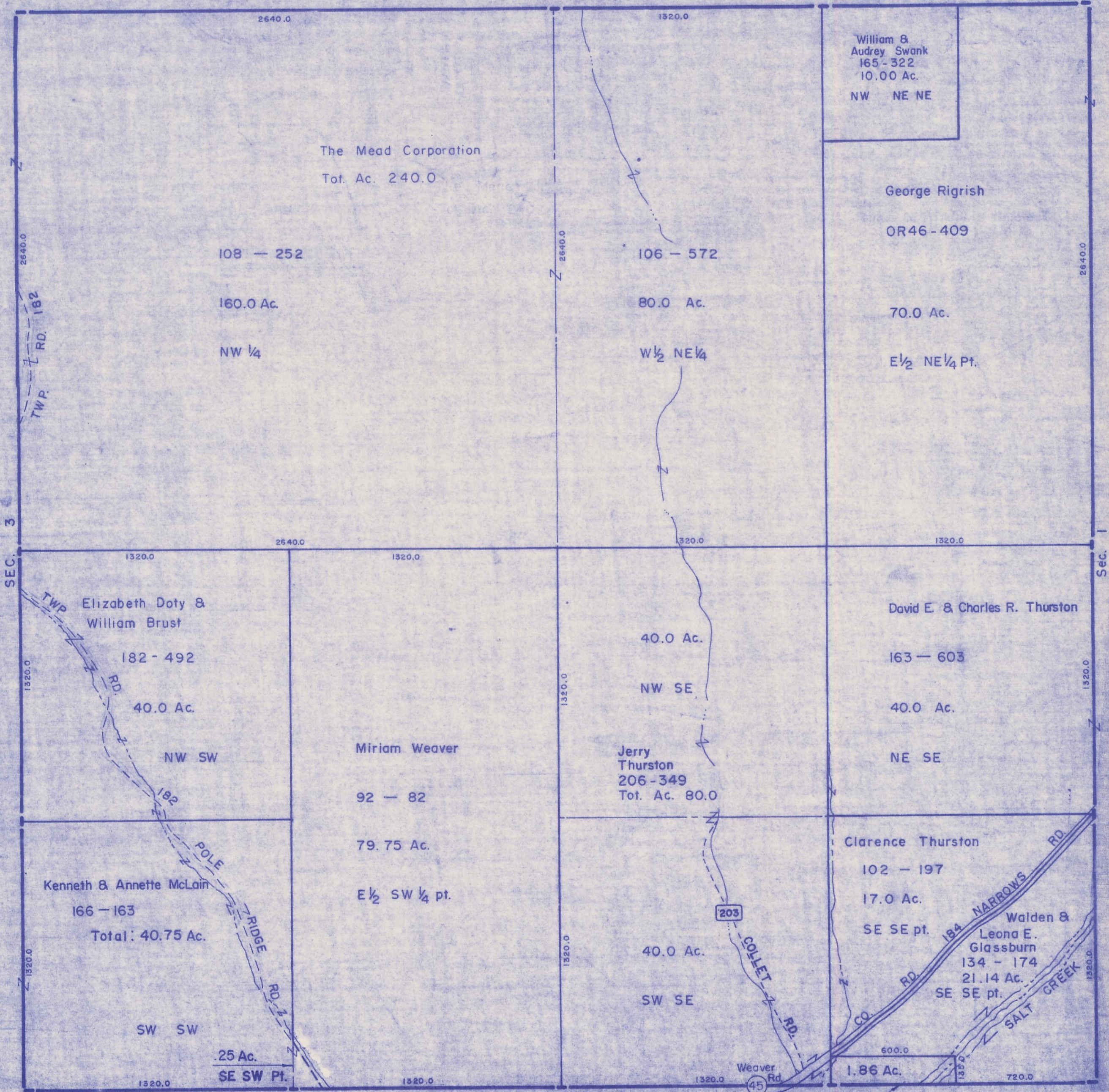
HOCKING COUNTY

Sec. 2 T10 R19

SALT CREEK TWP.

Scale 1" = 400'

SEC. 35



William &  
Audrey Swank  
165 - 322  
10.00 Ac.  
NW NE NE

The Mead Corporation  
Tot. Ac. 240.0

George Rigrish  
OR46 - 409  
70.0 Ac.  
E 1/2 NE 1/4 Pt.

Elizabeth Doty &  
William Brust  
182 - 492  
40.0 Ac.  
NW SW

Miriam Weaver  
92 - 82  
79.75 Ac.

Jerry  
Thurston  
206 - 349  
Tot. Ac. 80.0

David E. & Charles R. Thurston  
163 - 603  
40.0 Ac.  
NE SE

Kenneth & Annette McLain  
166 - 163  
Total: 40.75 Ac.

E 1/2 SW 1/4 pt.

40.0 Ac.  
SW SE

Clarence Thurston  
102 - 197  
17.0 Ac.  
SE SE pt.

Walden &  
Leona E.  
Glassburn  
134 - 174  
21.14 Ac.  
SE SE pt.

.25 Ac.  
SE SW Pt.

Weaver Rd  
45

1.86 Ac.

SEC. 11 Eagle Twp.

Vinton Co.

Clarence & Jane Volmer,  
182 - 199, OR45-625

SEC. 2  
BOTTOM TIER