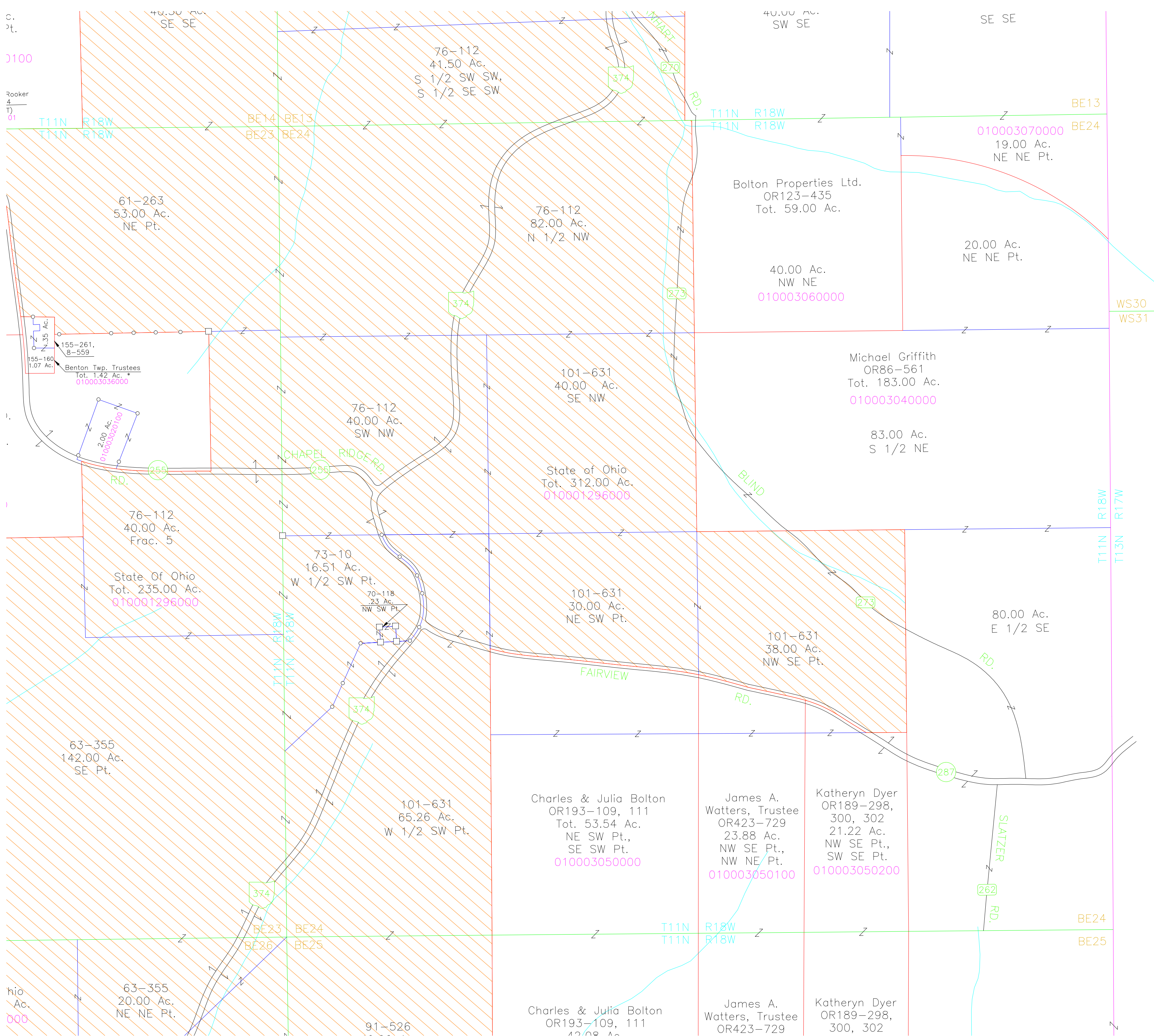


C.
Pt.
0100
Rooker
4
01



BE13

010003070000

19.00 Ac.
NE NE Pt.

BE24

Bolton Properties Ltd.
OR123-435
Tot. 59.00 Ac.

40.00 Ac.
NW NE
010003060000

20.00 Ac.
NE NE Pt.

WS30
WS31

Michael Griffith
OR86-561
Tot. 183.00 Ac.
010003040000

83.00 Ac.
S 1/2 NE

101-631
40.00 Ac.
SE NW

State of Ohio
Tot. 312.00 Ac.
010001296000

76-112
40.00 Ac.
SW NW

76-112
40.00 Ac.
Frac. 5

State Of Ohio
Tot. 235.00 Ac.
010001296000

73-10
16.51 Ac.
W 1/2 SW Pt.

101-631
30.00 Ac.
NE SW Pt.

101-631
38.00 Ac.
NW SE Pt.

80.00 Ac.
E 1/2 SE

63-355
142.00 Ac.
SE Pt.

101-631
65.26 Ac.
W 1/2 SW Pt.

Charles & Julia Bolton
OR193-109, 111
Tot. 53.54 Ac.
NE SW Pt.,
SE SW Pt.
010003050000

James A.
Watters, Trustee
OR423-729
23.88 Ac.
NW SE Pt.,
NW NE Pt.
010003050100

Katheryn Dyer
OR189-298,
300, 302
21.22 Ac.
NW SE Pt.,
SW SE Pt.
010003050200

374

BE23

BE24

BE26

BE25

T11N

R18W

T11N

R18W

BE24

BE25

Charles & Julia Bolton
OR193-109, 111
43.08 Ac.

James A.
Watters, Trustee
OR423-729

Katheryn Dyer
OR189-298,
300, 302

63-355
20.00 Ac.
NE NE Pt.

91-526

Ohio
Ac.
000