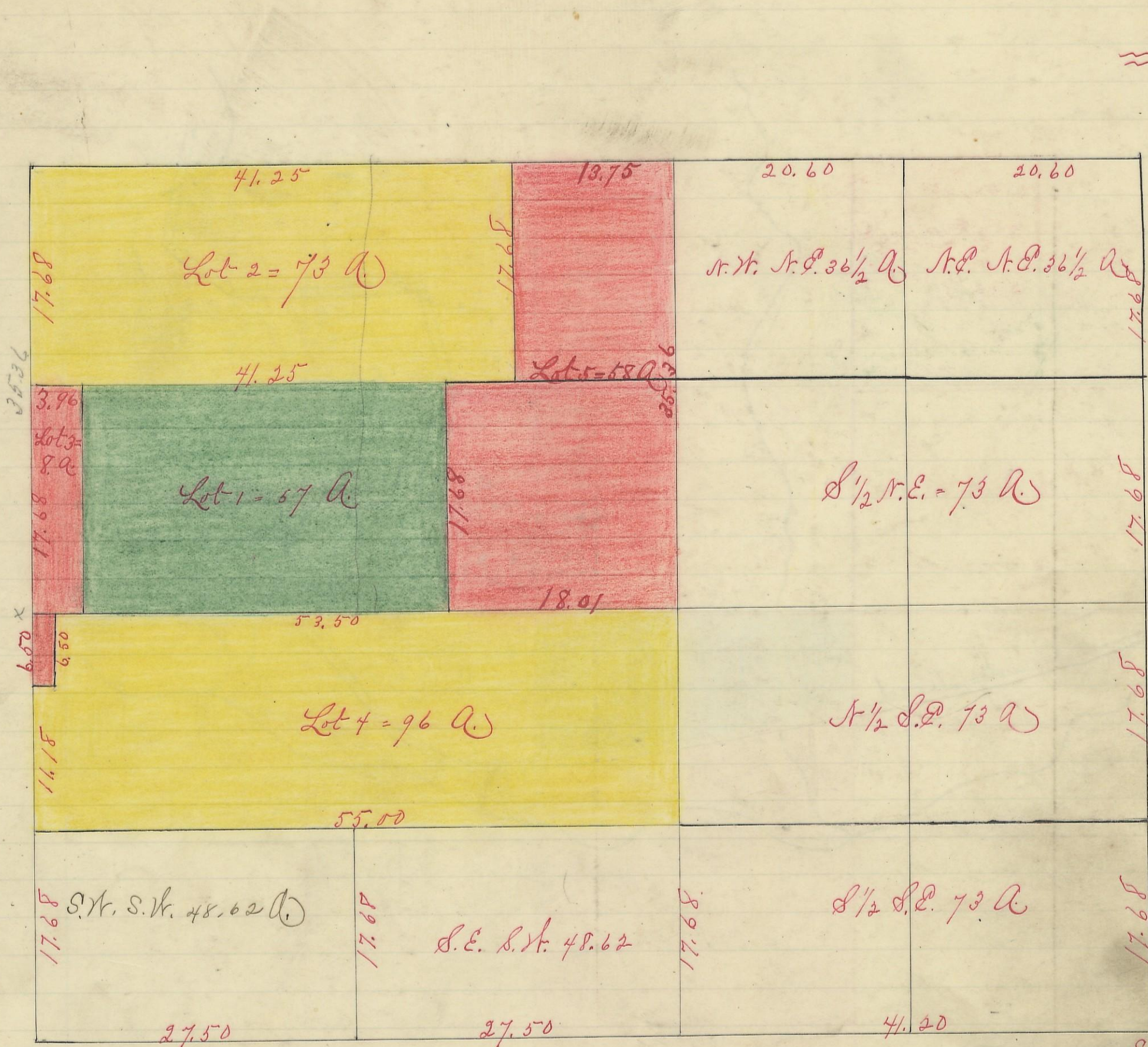


BENTON, No. 12, Range 18, Section No. 6.



Variation
1° 45' N

Scale 10 ch. to an inch

I hereby certify the above to be a correct Plat of Fractional Lots in Section No 6
 Township No 11. Range No 18 Jackson County Ohio
 Surveyed 1870. By Levi Davis Surveyor S.C.O.
 Recd and Recorded Dec 29th 1883.

Jacob Weaver Recorder. S.C.O.

I hereby certify the above to be a true copy.
 P. D. Sloan Recorder.

The above plat transferred from Plat book "A" page 237. Record of
 fractional lots Jackson Co. Ohio. April 9th 1901.
 P. D. Sloan
 Recorder.