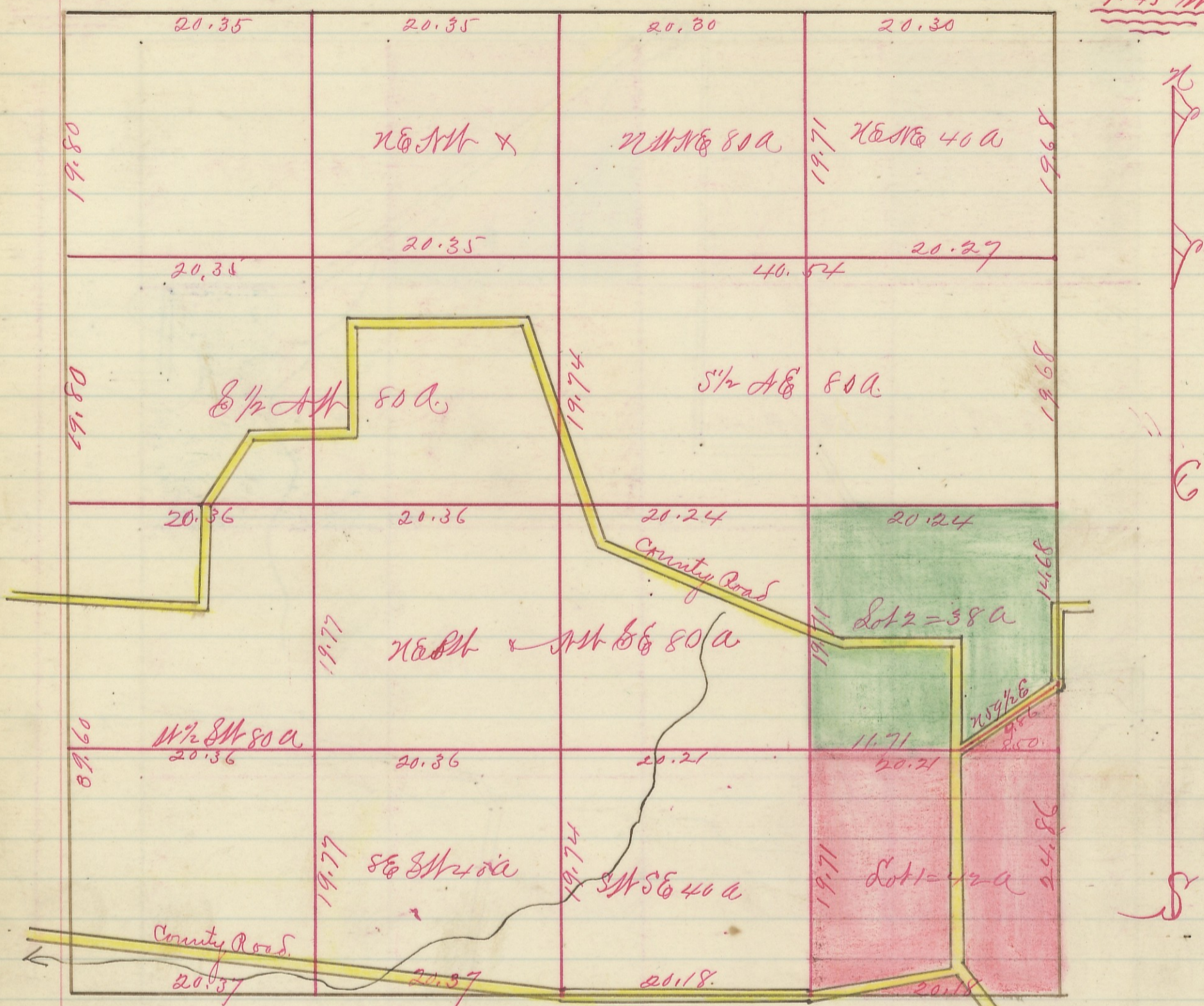


Sec. 28 Township 11 Range 18.

Variation

1045' N



Scale 1 inch to an inch

I hereby certify the above to be a correct Plat of Fractional  
 Lots in Section No 28 Township No 11 Range No 18 Hoosier County, Ind.  
 Surveyed 1870 By Levi Davis Surveyor H. C. Q.  
 Recd. and Recorded Jan 2<sup>nd</sup> 1884  
 Jacob Weaver Recorder