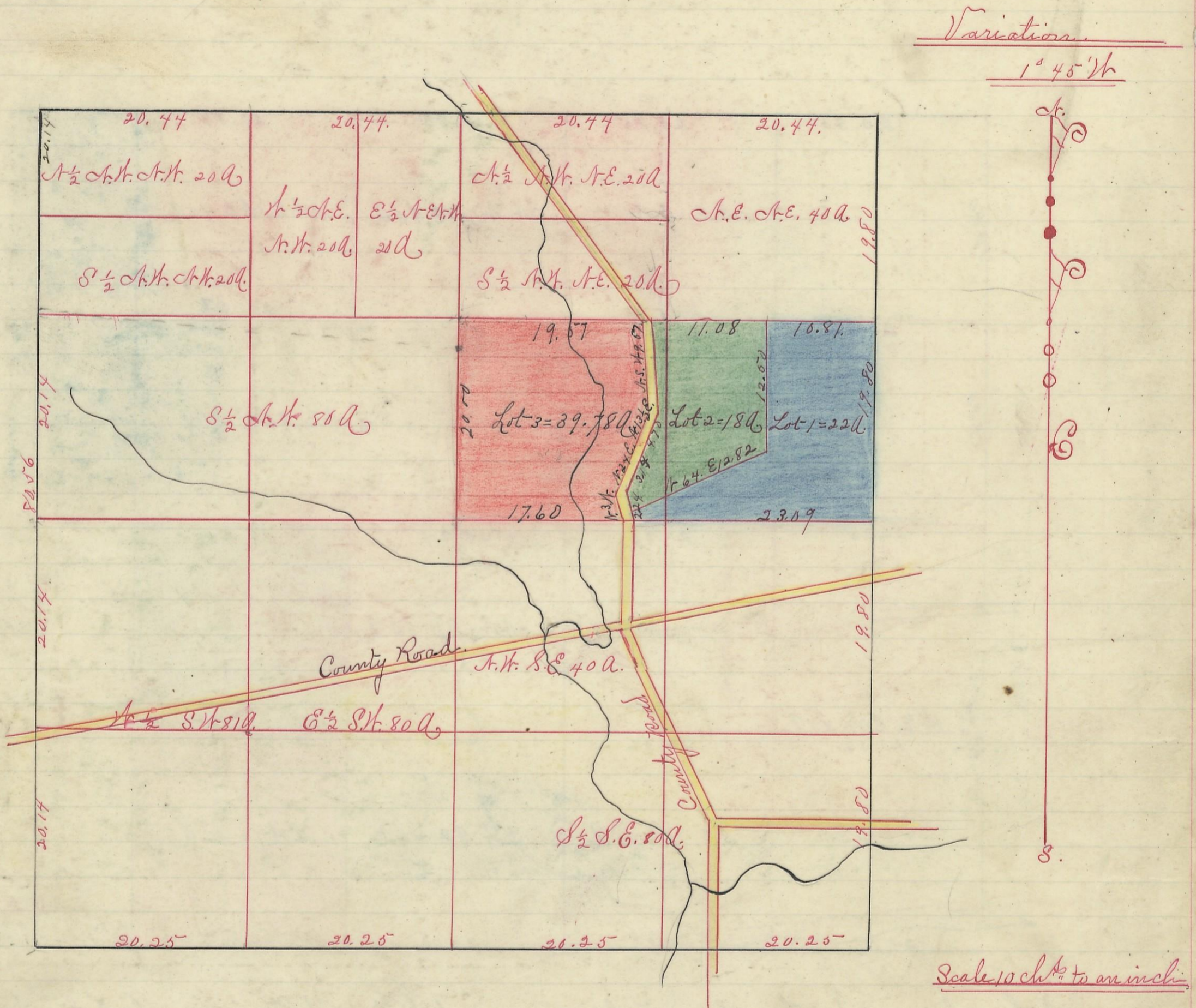


BENTON, No. <sup>11</sup>/<sub>12</sub>, Range 18, Section No. 29



I hereby certify the above to be a correct Plat of Fractional Lots in Section No 29,  
 Township No 11, Range No 18,ocking County Ohio.  
 Surveyed 1870. By Levi Davis, Surveyor. S. C. C.  
 Rec'd and Recorded Jan 2<sup>nd</sup> 1884.  
 Jacob Weaver, Recorder.

I hereby certify the above to be a true copy.  
 P. D. Sloan Recorder.

The above Plat transferred from Plat-Book "A" page 355. Record of fractional  
 lots S. C. C. April 17<sup>th</sup> 1901.  
 P. D. Sloan, Recorder.