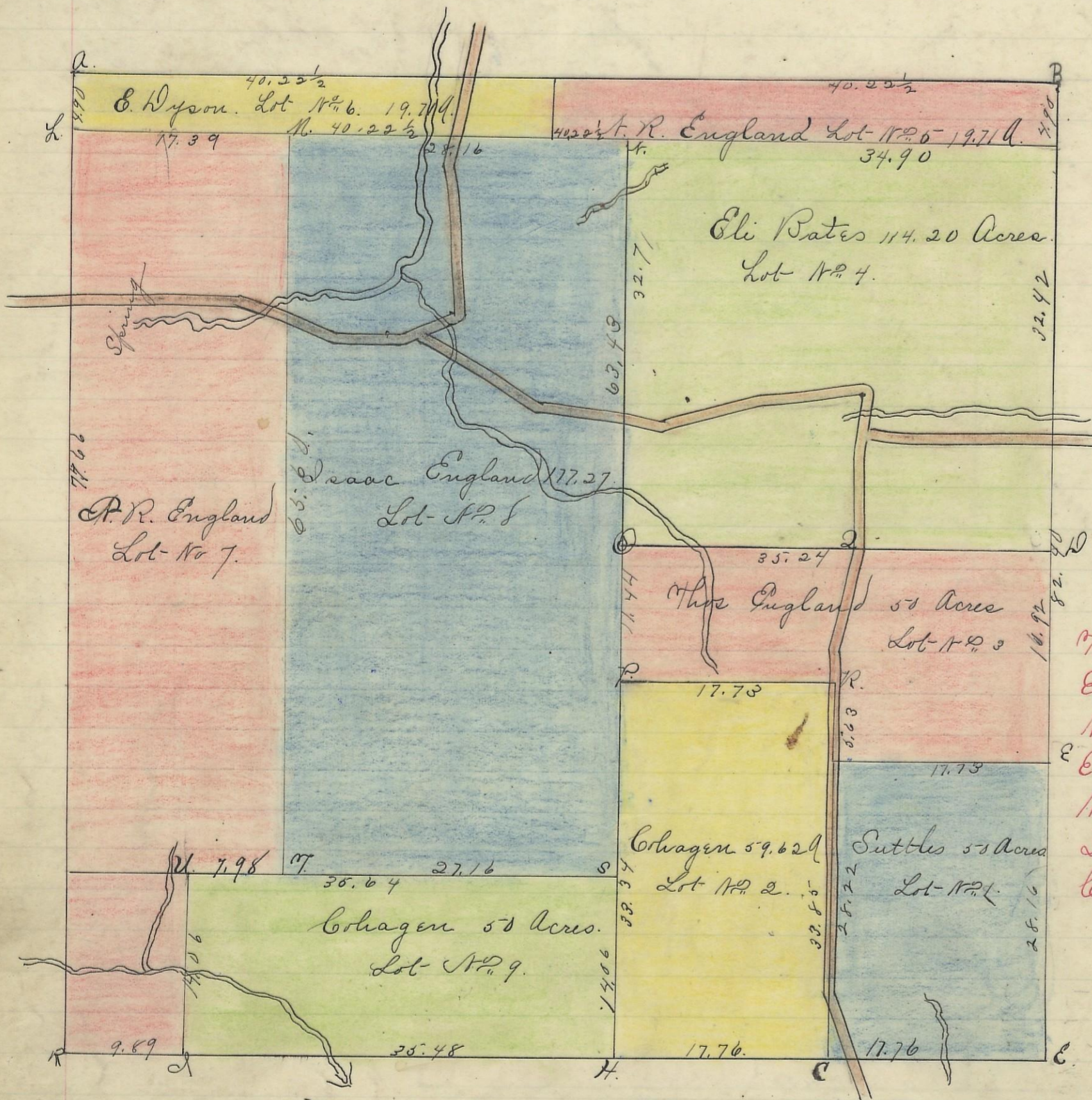


GREEN, No. 13, Range 16, Section No. 3



Corner	Running	Distance	Course	Remarks
A	apple tree	4	1 1/2 N.	152 1/2
B	W. Oak	40	1 27 E	158 1/2
C	W. Oak	12	1 24 N	86
D	W. Cherry	5	8 1/2 N.	52 1/2
E	Hickory	4	1 17 1/2 N.	23 1/2
F	W. Oak	36	1 72 E	77
G	W. Oak	14	8 51 E	3
H	190	12	1 44 1/2 10	17
I	13 oak	5	East	3
J	190	3	1 07 1/2 N.	24 1/2
K	190	14	1 2 N.	20 1/2
L	190	18	1 6 1/2 E	42 1/2
M	Blue oak	36	S. 85 E.	42
N	W. Oak	24	1 45 1/2 N	68
O	Ch. oak	18	1 39 1/2 N	57
P	Run	14	1 60 E	80 1/2
Q	Walnut	6	1 21 1/2 E.	87
R	Boak	14	S. 91 E.	154 1/2
S	W. oak	20	1 75 N	25
T	Walnut	6	S 80 1/2 E	48 1/2
U	maple	4	S 61 1/2 E	23
V	Hickory	4	1 19 3/4 E	46 1/2
W	Brak	10	East	42 3/4
X	Brak	6	1 86 N.	9
Y	Brak	3	S 69 1/2 N.	34
Z	Ho	3	1 32 N	27 1/2
AA	Brak	6	1 43 N	93 1/2
AB	Ho	4	S 60 N.	17
AC	W. oak	86	1 5 E.	12
AD	Ho	36	8 11 N	26.

Suttles Lot No. 1. 50.00 A.
 Cohagen. " " 2 59.62 A.
 Thos England " " 3 50.08 A.
 Eli Bates " " 4 = 114.20 A.
 R. England " " 5 = 19.71 A.
 E. Dyson " " 6 = 19.71 A.
 R. England " " 7 = 126.50 A.
 Isaac England " " 8 = 177.27 A.
 Cohagen. " " 9 = 50.08 A.
 Amt. 666.57 Acres.

I hereby certify the foregoing to be a correct Plat of fractional Lots in Section 11, Township 13, Range 16, Ohio Companies Purchase, Hocking County Ohio containing 666.57 Acres Surveyed 1868

By, Levi Davis, Surveyor Hocking County Ohio
 Recorder July 25th 1869 by J. C. Smart.

Recorder. S. C. C.

I hereby certify the above to be a true copy. P. D. Sloan, Recorder.

The above Plat transferred from Plat Book "A" page 116. Record of fractional lots S. C. C. May 17th 1901.

P. D. Sloan Recorder. S. C. C.