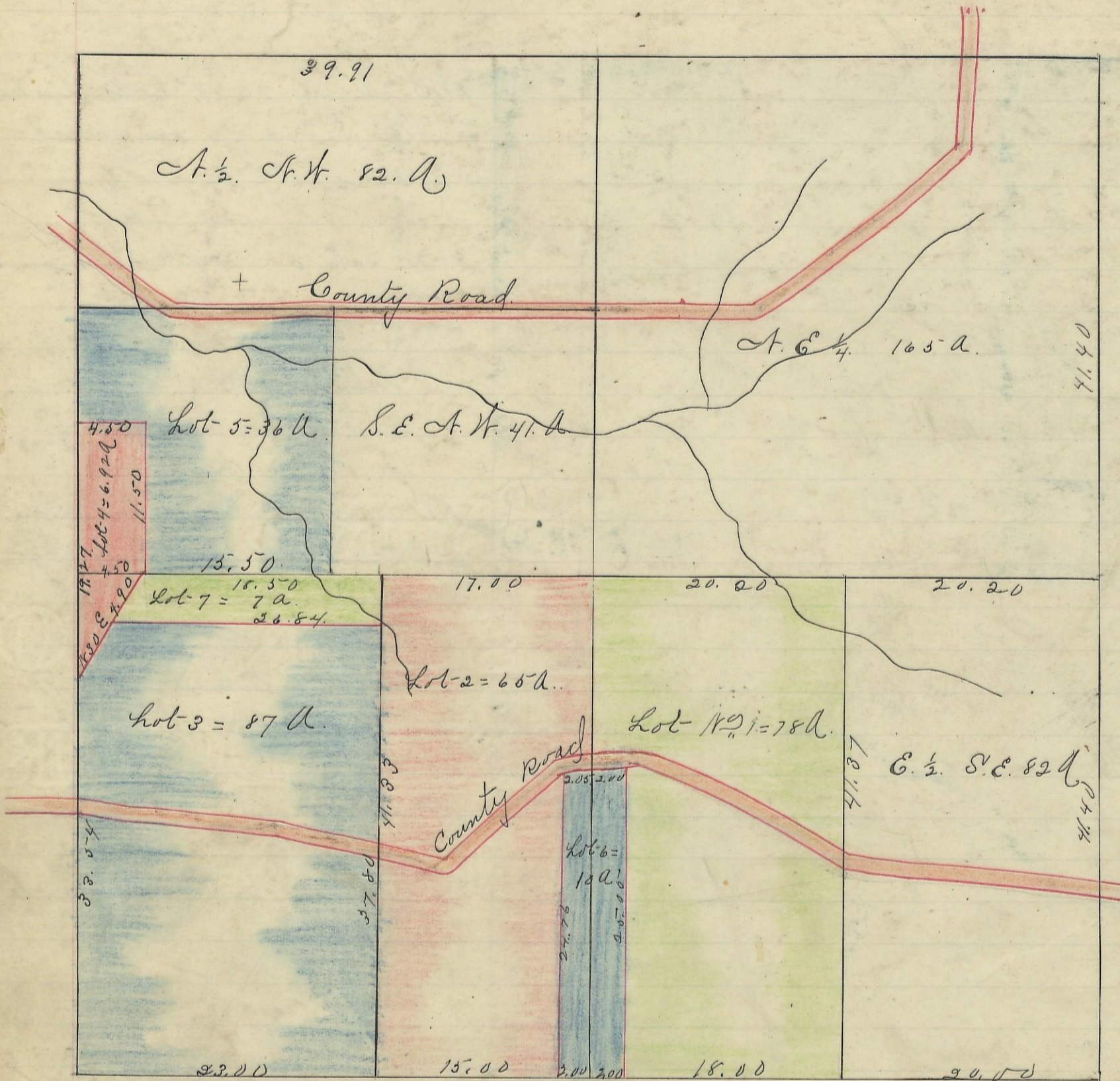


Ohio Company Purchase



Variation  
20 7/8'

Scale 10 chs to an inch

I hereby certify the above to be a correct Plat of Fractional Lots in Section  
 No. 22 Township No. 13 Range No. 16 Ohio Company Purchase.  
 ocking County Ohio surveyed 1870. By Levi Davis Surveyor.  
 Received Mch. 16. 1883 at 11 1/2 o'clock A.M.  
 Recorded Mch. 17. 1883.

Jacob. Heaver. Recorder. O. C. W.

I hereby certify the above to be a true copy.  
 The above Plat transferred from Plat Book "A" page 88. Record of  
 fractional Lots O. C. W. May 21 1901.  
 P. D. Sloan  
 Recorder. O. C. W.