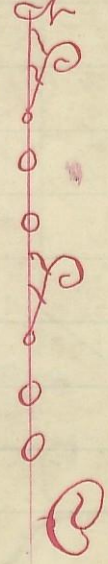
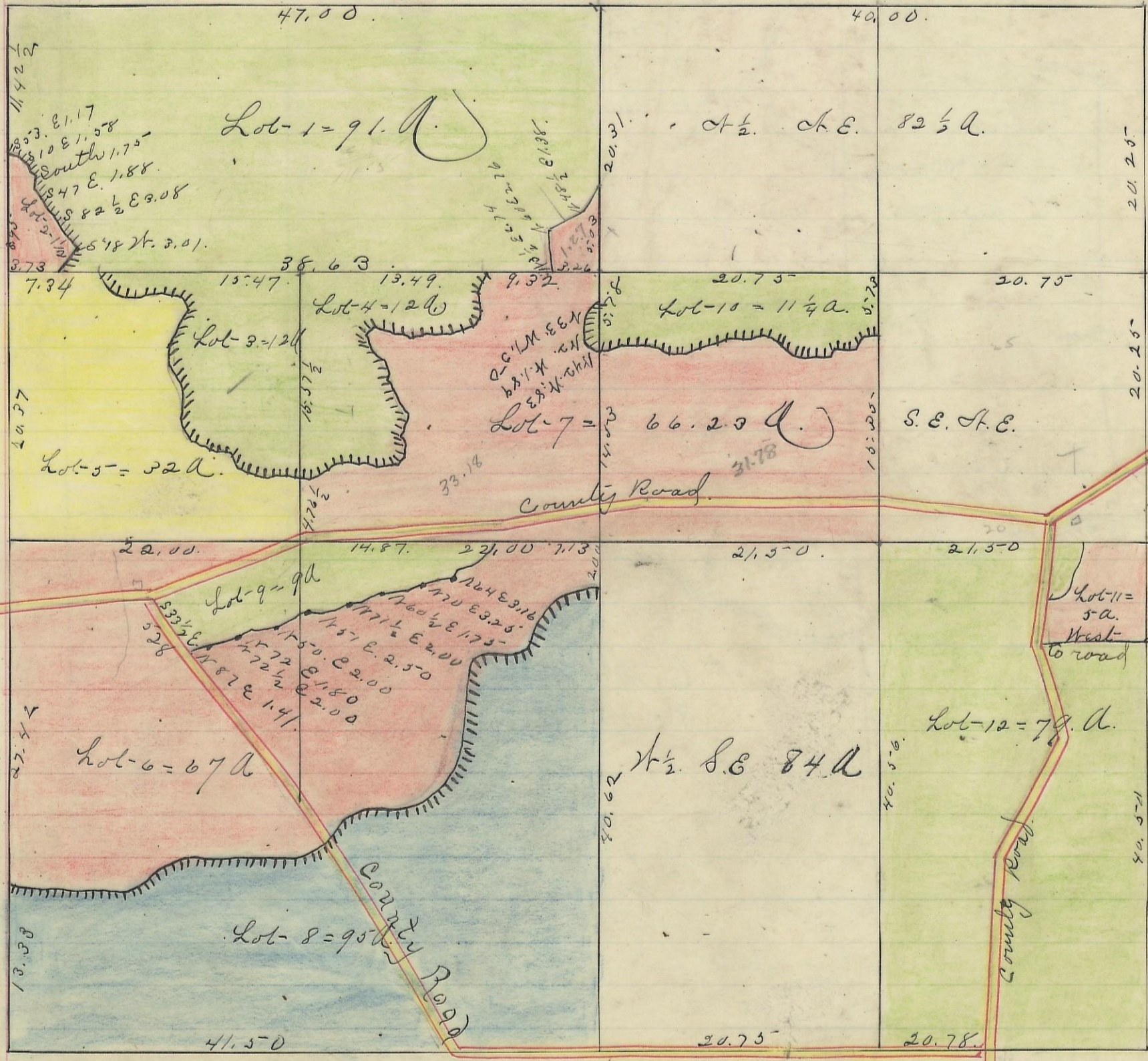


LAUREL, No. 12, Range 18, Section No. 9

91
34
115

66.23
1.27
67.50

Variation
1869.1'30" W
1882. = 3' W



Scale 10 chs to an inch

I hereby Certify the above to be a correct Plat of Fractional Lots in Section No. 9, Township No. 12 Range No. 18, Locking County Ohio: Surveyed, 1869 By Levi Davis Surveyor, S. C. W. in 1882 By James H. Davis Surveyor, S. C. W. Received and Recorded Jan 12th 1884.

Jacob Weaver, Recorder S. C. W.

I hereby Certify the above to be a true copy.

P. D. Sloan Recorder.

The above Plat transferred from Plat Book "A" page 366. Record of fractional Lots S. C. W. May 23rd 1901

P. D. Sloan Recorder, S. C. W.