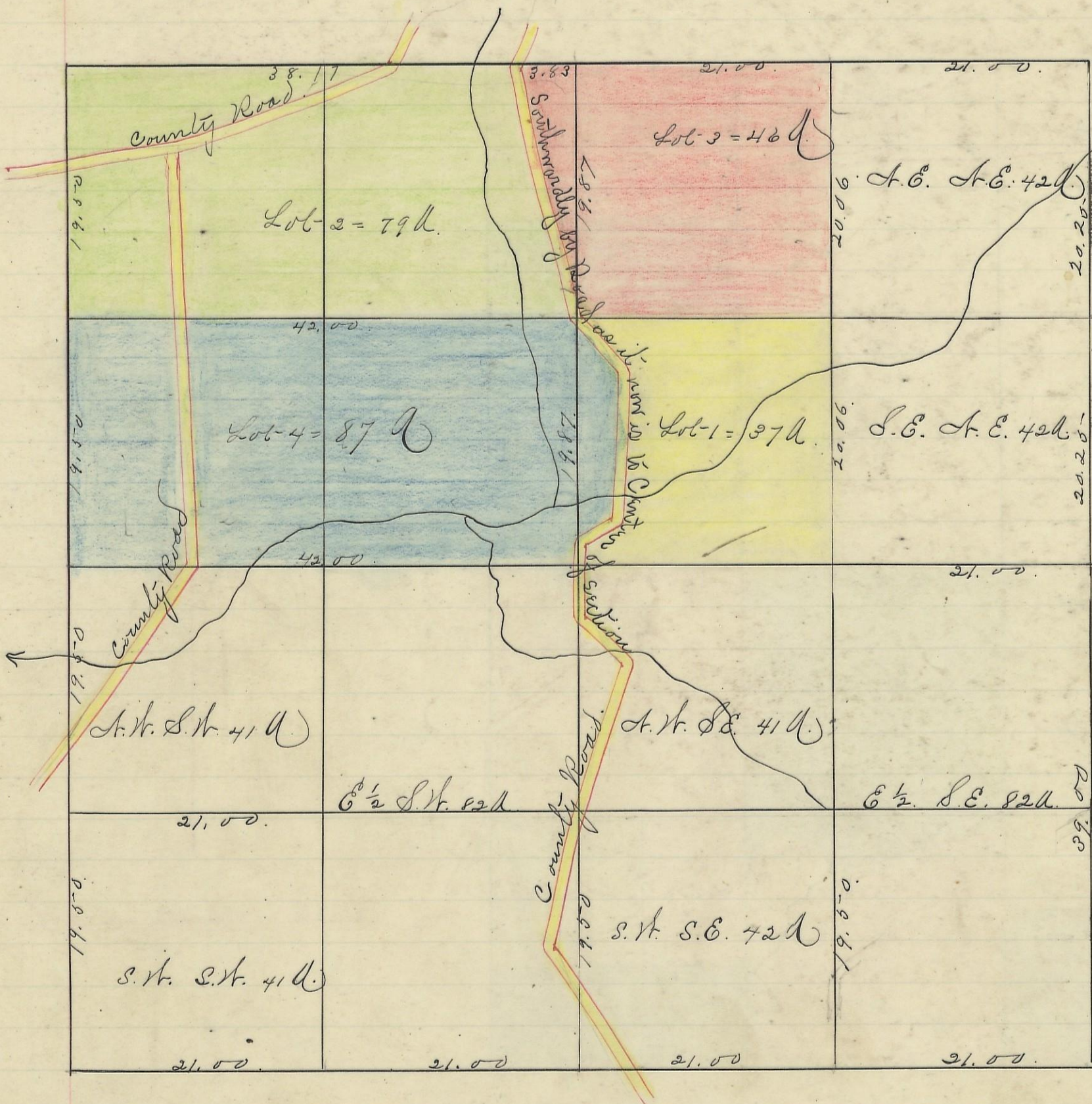


LAUREL, No. 12, Range 18, Section No. 30.



Variation  
1030h



Scale 10 chs to an inch

I hereby Certify the above to be a correct Plat of Fractional Lots in Section No. 30. Township No. 12. Range No. 18. Jackson County Ohio. Surveyed 1869.  
By Levi Davis Surveyor S. C. W.

Received and Recorded. Feb. 9. 1884.  
Jacob Hiarer. Recorder. S. C. W.

I hereby Certify the above to be a true copy.  
P. D. Sloan

The above Plat transferred from Plat Book "A" page 380. Record of fractional Lots S. C. W. May 28" 1901.  
P. D. Sloan  
Recorder. S. C. W.