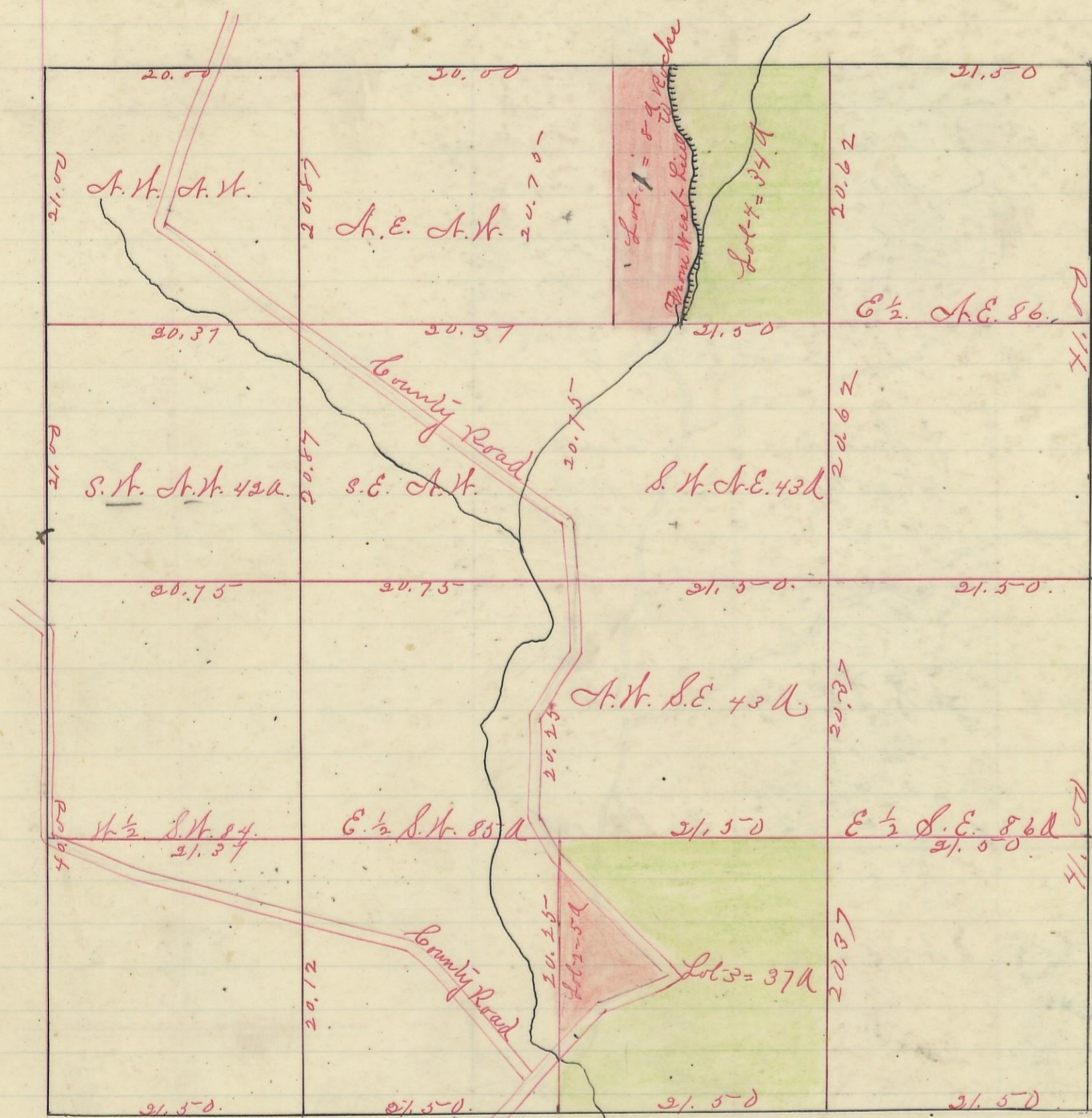


LAUREL, No. 12, Range 18, Section No. 32



Variation
10 30' N



Scale is chas to an inch

I hereby Certify the above to be a correct Plat of Fractional Lots in Section No. 32. Township No. 12 Range No. 18. Jackson County Ohio Surveyed. 1869 By Levi Davis Surveyor. S. C. W. Rec'd and Recorded Feb. 9th 1884.

Jacob Weaver. Recorder.

I here by Certify the above to be a true copy.

P. D. Sloan
Rec'd

The Above Plat transferred from Plat-Book "K" Page 582. Record of fractional Lots. S. C. W. May 28th 1901.

P. D. Sloan
Recorder.